



Weatherly Index 310/322-340

Catalog 457649

July 2007

SKF Agricultural pocket guide



SKF Agricultural pocket guide

**Our engineering & technical service departments
are as close as your phone and ready to assist you**

Call: 1-800-882-0008 (USA - Canada)

For more detailed information refer to the Specification Catalog (Form #457018)

Table of contents

Bearing nomenclature.....	5	Mounting flange to adapter bearing chart.....	20
Pillow blocks and mounted flange units	6	Adapter bearings.....	24
Narrow series w/eccentric locking collar	6	Narrow	24
Narrow series w/screw locking collar	8	Narrow w/set screw locking collar.....	26
Wide series (RAK)	9	Relubricated with set screw lock (black oxide coated) ..	27
Wide series (SY w/eccentric locking collar)	11	Relubricatable wide.....	28
Pressed-steel pillow blocks.....	12	Non-relubricatable wide.....	30
Cast iron pillow blocks (RAS)	12	Locking collar to mounted unit chart	32
Cast iron flange (with bearings - 2 and 4 hole)	13	Disc harrow bearings	34
Cast iron housings (without bearings).....	14	Triple lip seal, non-relubricatable, square bore	34
Cast iron housing to adapter bearing chart.....	16	Triple lip seal, non-relubricatable, round bore	35
Stamped steel flange housings (without bearings)	19	Triple lip seal, relubricatable, square bore	36

(Cont.)

Table of contents - cont.

Disc harrow bearings - *cont.*

Triple lip seal, relubricatable, round bore.....	38
Hex bore, non-relubricatable.....	40
Disc harrow spherical O.D. by shaft size.....	41
Square bore, relubricatable	41
Round bore, non-relubricatable.....	42
Triple lip series disc harrow units	43
Water pump bearings.....	44
Special bearings.....	45

Preferred ag seals	49
Competitor to SKF interchange guide.....	52
Fafnir to SKF.....	52
Federal Mogul to SKF	66
NTN to SKF.....	74
Conversion chart (inches to millimeters).....	83
Product images	84
Warranty	90

Agricultural bearings

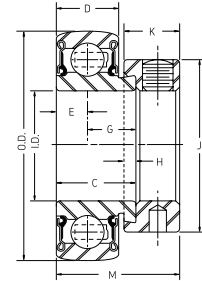
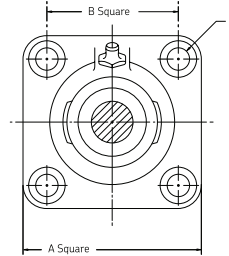
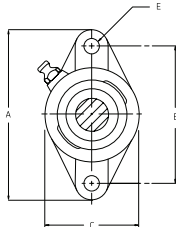
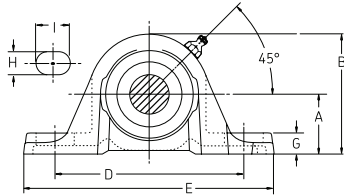
Power transmission units number system

Prefix	Description
PB	Stamped steel pillow block, R-seal, Narrow inner ring bearing
RAK	Std. pillow block, R-seal, Wide inner ring bearing
RAS	High center line pillow block, R-seal, Wide inner ring bearing
RCJ	Four bolt flange unit, R-seal, Wide inner ring bearing
RCJT	Two bolt flange unit, R-seal, Wide inner ring bearing
SAS	High center line pillow block, R-seal, Wide inner ring bearing
SCJ	Four bolt flange unit, Land-riding seal, Narrow inner ring bearing w/set screw
SCJT	Two bolt flange unit, Land-riding seal, Narrow inner ring bearing w/set screw
VAK	Std. pillow block, Land-riding seal, Narrow inner ring bearing
VAS	High center line pillow block, Land-riding seal, Narrow inner ring bearing
VCJ	Four bolt flange unit, Land-riding seal, Narrow inner ring bearing
VCJT	Two bolt flange unit, Land-riding seal, Narrow inner ring bearing

Example: **RAK 1- 1/2**: Prefix **RAK** - Size in inches **1** and fractions of inches **1/2**.

Pillow blocks and mounted flange units

Narrow series with eccentric locking collar



Shaft size	Pillow block	Two-bolt flange unit	Four-bolt flange unit	Narrow adapter bearing insert
1/2				GRA008-RRB
5/8	† VAK 5/8	VCJT 5/8		GRA010-RRB
3/4	VAK 3/4	VCJT 3/4		GRA012-RRB
7/8	VAK 7/8	VCJT 7/8		GRA014-RRB
15/16	VAK 15/16		VCJ 15/16	GRA015-RRB
1	VAK 1	VCJT 1	VCJ 1	GRA100-RRB
1-1/8	VAK 1-1/8	VCJT 1-1/8		GRA102-RRB
1-3/16	VAK 1-3/16M	VCJT 1-3/16		GRA103-RRB

† Also available with high centerline

(Cont.)

Pillow blocks and mounted flange units

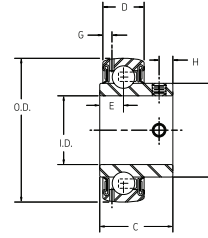
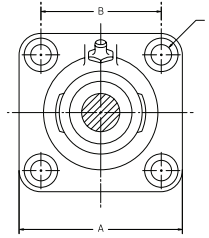
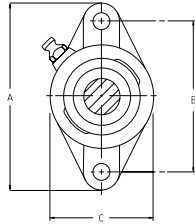
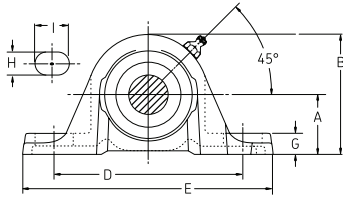
Narrow series with eccentric locking collar - *cont.*

Shaft size	Pillow block	Two-bolt flange unit	Four-bolt flange unit	Narrow adapter bearing insert
1-1/4	VAK 1-1/4S	VCJT 1-1/4S	VCJ 1-1/4S	GRA103RRB2
1-1/4	VAK 1-1/4	VCJT 1-1/4	VCJ 1-1/4	GRA104-RRB
1-3/8	VAK 1-3/8	VCJT 1-3/8	VCJ 1-3/8	GRA106-RRB
1-7/16	VAK 1-7/16	VCJT 1-7/16	VCJ 1-7/16	GRA107-RRB
1-1/2	VAK 1-1/2	VCJT 1-1/2	VCJ 1-1/2	GRA108-RRB
1-11/16				GRA111-RRB
1-3/4		VCJT 1-3/4	VCJ 1-3/4	GRA112-RRB
1-15/16			VCJ 1-15/16	GRA115-RRB
2				GRA115RRB2
2		VCJT 2		GRA200-RRB
2-3/16				GRA203-RRB

† Also available with high centerline

Pillow blocks and mounted flange units - *cont.*

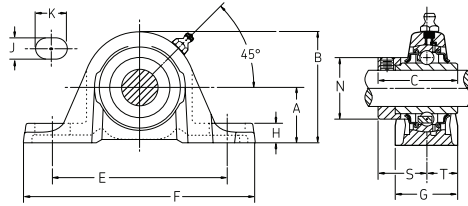
Narrow series with screw locking collar



Shaft size	Pillow block	Two-bolt flange unit	Four-bolt flange unit	Narrow adapter bearing insert	Shaft size	Pillow block	Two-bolt flange unit	Four-bolt flange unit	Narrow adapter bearing insert
1/2	SAS 1/2				1-1/4	SAS 1-1/4	SCJT 1-1/4	SCJ 1-1/4	GYA104-RRB
5/8	SAS 5/8	SCJT 5/8		GYA010-RRB	1-3/8	SAS 1-3/8			GYA106-RRB
3/4	SAS 3/4	SCJT 3/4		GYA012-RRB	1-7/16	SAS 1-7/16	SCJT 1-7/16		GYA107-RRB
7/8				GYA014-RRB	1-1/2			SCJ 1-1/2	GYA108-RRB
15/16				GYA015-RRB	40mm		SCJT-40MM	SCJ-40MM	
1	SAS 1	SCJT 1	SCJ 1	GYA100-RRB	1-3/4	SAS 1-3/4			GYA112-RRB
1-1/8	SAS 1-1/8		SCJ 1-1/8	GYA102-RRB	1-15/16			SCJ 1-15/16	
1-3/16				GYA103-RRB	2-1/2	SAS 2-1/2			
1-1/4		SCJT 1-1/4S		GYA103RRB2					

Pillow blocks and mounted flange units - cont.

Wide series (RAK)



Shaft size	Pillow block	Two-bolt flange unit	Four-bolt flange unit	Narrow adapter bearing insert
1/2	† RAK 1/2			
5/8	† RAK 5/8			G1010-KRRB
11/16	† RAK 11/16			
3/4	† RAK 3/4	RCJT 3/4	RCJ 3/4	G1012-KRRB
13/16	† RAK 13/16			G1013-KRRB
7/8	† RAK 7/8			G1014-KRRB
15/16	† RAK 15/16		RCJ 15/16	G1015-KRRB
1	† RAK 1	RCJT 1	RCJ 1	G1100-KRRB
1-1/16				G1101-KRRB
1-1/8	†* RAK 1-1/8		RCJ 1-1/8	G1102-KRRB

† Also available with high centerline

* Also available with triple-lip seal design

Pillow blocks and mounted flange units - cont.

(Cont.)

Wide series (RAK) - *cont.*

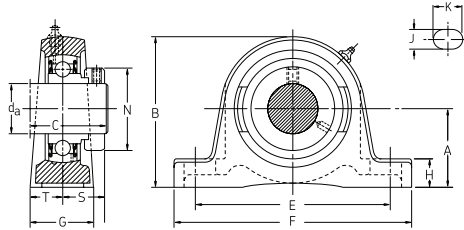
Shaft size	Pillow block	Two-bolt flange unit	Four-bolt flange unit	Narrow adapter bearing insert
1-3/16	+* RAK 1-3/16M			G1103-KRRB
1-1/4	+* RAK 1-1/4	RCJT 1-1/4	RCJ 1-1/4	G1104-KRRB
1-3/8	+* RAK 1-3/8		RCJ 1-3/8	G1106-KRRB
1-7/16	+* RAK 1-7/16	RCJT 1-7/16	RCJ 1-7/16	G1107-KRRB
1-1/2	+* RAK 1-1/2	RCJT 1-1/2	RCJ 1-1/2	G1108-KRRB
1-9/16			RCJ 1-9/16	G1109-KRRB
1- 5/8	+* RAK 1-5/8		RCJ 1-5/8	G1110-KRRB
1-11/16	+* RAK 1-11/16		RCJ 1-11/16	G1111-KRRB
1-3/4	+* RAK 1-3/4	RCJT 1-3/4	RCJ 1-3/4	G1112-KRRB
1-13/16			RCJ 1-3/16M	
1-7/8	† RAK 1-7/8			G1114-KRRB
1-15/16	+* RAK 1-15/16	RCJT 1-15/16	RCJ 1-15/16	G1115-KRRB
2	+* RAK 2		RCJ 2	G1200-KRRB
2-3/16	+* RAK 2-3/16		RCJ 2-3/16	G1203-KRRB
2-1/4			RCJ 2-7/16	
2-7/16	+* RAK 2-7/16			G1207-KRRB
2-1/2	+* RAK 2-1/2			
3	+* RAK 3			

† Also available with high centerline

* Also available with triple-lip seal design

**Pillow blocks and mounted
flange units - *cont.***

Wide series (SY w/eccentric locking collar)



Pillow block	I.D. size	Collar	Bolt size	"A"	"B"	"C"	"E"	"F"	"G"	"H"	"J"	"K"	"N"	"S"	"T"
SY1-1/4FM	1-1/4	EC lock	1/2	1-7/8	3-21/32	1-11/16	6-9/32	1-25/32	3/4	1/2	1-5/32	3/8			
SY1-1/4TF	1-1/4	Set screw	1/2	1-7/8	3-21/32	1-11/16	5-1/4	6-5/16	1-25/32	3/4	1/2	1	11/16		
SY1-1/8TF	1-1/8	S1102-K	1/2	1-11/16	3-5/16	1-29/32	4-5/8	6-3/16	1-3/4	21/32	9/16	15/16	1 3/4	1-3/16	7/8
SY1FM	1	Set screw	3/8	1-7/16	2-3/4	1-7/32	3-11/16	5-1/8	1-13/32	5/8	3/8			9/32	15/16
SY1TF	1	-	3/8	1-7/16	2-13/16	1-3/4	5-1/8	5-1/2	1-13/32	19/32	7/16	13/16	1 1/2	1-1/16	45/64

Pillow blocks and mounted
flange units - cont.

Pressed-steel pillow blocks

Shaft size	Pressed steel pillow blocks	Bearing number	Collar
1/2		RA008-RRB	S1008-K
5/8	PB 5/8	RA010-RRB	S1010-K
3/4	PB 3/4	RA012-RRB	S1012-K
7/8		RA014-RRB	S1014-K
1	PB 1	RA100-RRB	S1100-K
1-1/4		RA103-RRB2	S1103-K3

Cast iron pillow blocks RAS series

Bearing number	Adapter bearing	I.D. size	Collar	Bolt size	"A"	"B"	"C"	"E"	"F"	"G"	"H"	"J"	"K"	"N"	"S"	"T"
RAS 1	G1100-KRRB	1	S1100-K	3/8	1-7/16	2-13/16	1-3/4	4-1/8	1-13/32	1-13/32	19/32	7/16	13/16	1-1/2	1-1/16	45/64
RAS 1-1/4	G1104-KRRB	1-1/4	S1104-K	1/2	1-7/8	3-11/16	2-1/64	5	6-3/4	1-3/4	23/32	9/16	7/8	2-1/8	1-9/32	7/8
RAS 1-1/2	G1108-KRRB	1-1/2	S1108-K	1/2	2	3-15/16	2-7/32	5-3/8	7-1/8	1-15/16	3/4	9/16	1	2-3/8	1-3/8	31/32
RAS 1-5/8	G1110-KRRB	1-5/8	S1110-K	1/2	2-1/8	4-3/16	2-7/32	5-21/32	7-3/8	2	3/4	9/16	29/32	2-1/2	1-3/8	1
RAS 11/16	G1011-KRRB	11/16	S1011-K	3/8	1-3/16	2-1/4	1-15/32	3-5/8	4-7/8	1-7/32	15/32	7/16	7/8	1-1/8	59/64	39/64
RAS 13/16	G1013-KRRB	13/16	S1013-K	3/8	1-7/16	2-13/16	1-3/4	4-1/8	5-1/2	1-13/32	19/32	7/16	13/16	1-1/2	1-1/16	45/64
RAS1-3/16M	G1103-KRRB	1-3/16	S1103-K	1/2	1-11/16	1-11/16	1-29/32	4-5/8	6-3/16	1-3/4	21/32	9/16	15/16	1-3/4	1-3/16	7/8

Note: For RAS line drawing, please see RAK series.

Pillow blocks and mounted flange units - cont.

Cast iron flange (with bearings)

2 Hole cast iron flange w/bearing

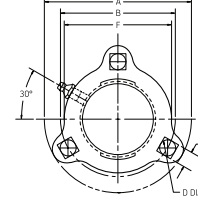
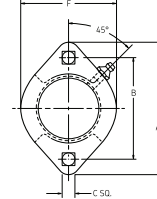
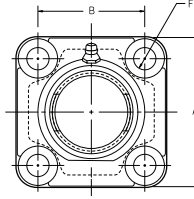
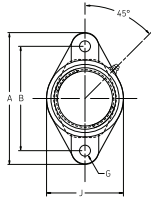
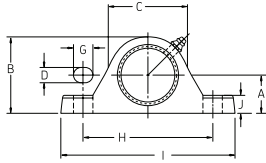
Bearing number	Shaft size	Collar	Bolt size	"A"	"B"	"C"	"D"	"E"	"F"	"G"	"H"	"J"
FYT1-1/4TF	1-1/4	S1104-K	33/64	6-1/8	5-1/8	3-5/8	1-15/32	1-1/2	33/64	1-7/16	9/16	1-1/64
FYT1-1/8TF	1-1/8	S1102-K	29/64	5-9/16	4-19/32	3-1/8	1-3/8	1-11/32	29/64	1-9/32	17/32	29/32
FYT1-3/4TF	1-3/4	Set screw	9/16	7-1/16	5-27/64	4-1/4	1-17/32	9/16	2-3/32	5/8		
FYT1-3/8TF	1-3/8	Set screw	1/2	6-1/8	5-1/8	3-5/8	1-11/32	1/2	1-13/16	9/16		
FYT1TF	1	Set screw	15/32	4-7/8	3-29/32	2-3/4	1-3/16	7/16	1-17/32	5/8		
FYT2TF	1	S1100-K	15/32	4-7/8	3-57/64	2-3/4	1-5/16	1-11/64	15/32	1-7/64	7/16	49/64

4 Hole cast iron flange w/bearing

Bearing number	Shaft size	Collar	Bolt size	"A"	"B"	"C"	"D"	"E"	"F"	"G"	"H"	"J"
FY2-RM	2	Set screw	5/8	6-7/8	5-1/8	27/32	2-7/8	2-7/16	5/8			1-5/32
FY2TF	2	Set screw	5/8	6-3/8	5-1/8	27/32	1-7/8	2-15/32	5/8			5

Pillow blocks and mounted flange units - cont.

Cast iron housings (without bearings)



Basic ring	Shaft size	Standard pillow block	Two-bolt flange unit	Four-bolt flange unit	Light two-bolt flange unit	Light three-bolt flange unit	4 hole cast iron flange
203	1/2 7/16 5/8	AK03	CJT03	CJ03			
204	3/4	AK04	CJT04	CJ04		FB3-47-R	
205	13/16 7/8 15/16 1	AK05	CJT05	CJ05	FB52-R	FB3-52-R	
206	1-1/16 1-1/8 1-3/16 1-1/4	AK06	CJT06	CJ06		FB3-62-R	

Pillow blocks and mounted flange units - cont.

(Cont.)

Cast iron housings (without bearings) - cont.

Basic ring	Shaft size	Standard pillow block	Two-bolt flange unit	Four-bolt flange unit	Light two-bolt flange unit	Light three-bolt flange unit	4 hole cast iron flange
207	1-1/4	AK07	CJT07	CJ07			
	1-5/16						
	1-3/8						
	1-7/16						
208	1-1/2	AK08					
	1-9/16						
209	1-5/8	AK09	CJT09	CJ09			
	1-11/16						
	1-3/4						
210	1-13/16	AK10		CJ10			FU3M45 (45mm shaft)
	1-7/8						
	1-15/16						
211	2	AK11		CJ11			
	2-1/8						
	2-3/16						

Pillow blocks and mounted flange units - cont.

Cast iron housing to adapter bearing chart

Housing number	Extended (Narrow) inner ring bearing	Wide inner ring bearing	Wide inner ring - triple lip	Hex bore & disc harrow bearings
AK03	GRA008-RRB GRA010-RRB	G1010-KRRB		
CJT03 CJ03	GYA010-RRB GYA010-RRB			
AK04	GRA012-RRB GYA012-RRB	G1012-KRRB		
CJ04 CJT04 FB3-47-R	GYA012-RRB GYA012-RRB GYA012-RRB			
AK05	GRA014-RRB GRA015-RRB	G1013-KRRB G1014-KRRB	G1100-PPB3	
CJ05 CJT05	GRA100-RRB GYA014-RRB GYA015-RRB GYA100-RRB	G1015-KRRB G1100-KRRB		
FB52-R FB3-52-R		GY1100KRRB GY1100KRRB		

Pillow blocks and mounted
flange units - cont.

(Cont.)

Cast iron housing to adapter bearing chart - cont.

Housing number	Extended (Narrow) inner ring bearing	Wide inner ring bearing	Wide inner ring - triple lip	Hex bore & disc harrow bearings
AK06	GRA102-RRB	G1101-KRRB G1102-KRRB	G1103-PPB4	
CJ06	GRA103-RRB	G1103-KRRB		
CJT06	GRA103RRB2 GYA102-RRB	G1103KRRB3		
FB3-62-R	GYA103-RRB GYA103RRB2			
AK07	GRA104-RRB	G1104-KRRB G1105-KRRB	G1104-PPB2 G1106-PPB2	
CJ07	GRA106-RRB	G1106-KRRB	G1107-PPB2	
CJT07	GRA107-RRB GYA104-RRB GYA106-RRB GYA107-RRB	G1107-KRRB GY1104KRRB		
AK08	GRA108-RRB	G1108-KRRB G1109-KRRB	G1108-PPB3	
CJ08	GYA108-RRB	GY1108KRRB		
CJT08		G1109-KRRB		W208-PPB16
AK09	GRA111-RRB GRA112-RRB	G1110-KRRB G1111-KRRB		GW209-PPB8

Pillow blocks and mounted flange units - cont.

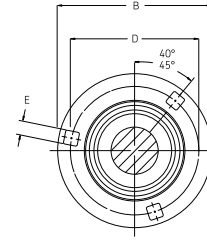
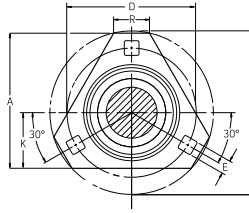
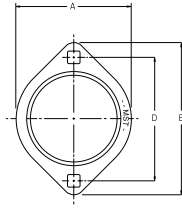
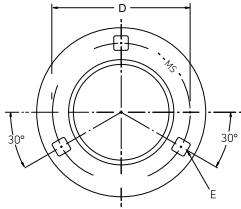
(Cont.)

Cast iron housing to adapter bearing chart - *cont.*

Housing number	Extended (Narrow) inner ring bearing	Wide inner ring bearing	Wide inner ring - triple lip	Hex bore & disc harrow bearings
CJ09 CJT09	GYA112-RRB	G1112-KRRB	G1112-PPB4	
AK10 CJ10	GRA115-RRB GRA115-RRB2	G1114-KRRB G1115-KRRB	G1115-PPB3	
AK11 CJ11	GRA200-RRB GRA203-RRB	G1200-KRRB G1203-KRRB	G1200-PPB4 G1203-PPB4	

Pillow blocks and mounted flange units - *cont.*

Stamped-steel flange housings without bearings



Shaft size	Mounting flange MS	Mounting flange MST	Mounting flange MSTR	Mounting flange G-MSA	Shaft size	Mounting flange MS	Mounting flange MST	Mounting flange MSTR	Mounting flange G-MSA
1/2	40-MS	40-MST			1-3/8	72-MS	72-MST	72-MSTR	G72-MSA
9/16	40-MS	40-MST			1-1/2	80-MS			G80-MSA
5/8	40-MS	40-MST			1-11/16	85-MS			G85-MSA
3/4	47-MS	47-MST	47-MSTR		1-11/16	87-MS			
7/8	52-MS	52-MST	52-MSTR	G52-MSA	1-7/8	90-MS			G90-MSA
1-1/8	62-MS	62-MST	62-MSTR	G62-MSA	2-1/8	100-MS			G100-MSA

Note: 80-MS through 100-MS and G80-MSA through G100-MSA mounting flange incorporates the four-bolt hole design - 40-MS through 72-MS, 47-MSTR through 71-MSTR and G52-MSA through G71-MSA incorporates the three-bolt hole design. 40-MST through 72-MST incorporates the two-bolt hole design.

Stamped steel flange housings

Mounting flange to adapter bearing chart

Mounting flange number	Extended inner ring (narrow) bearing number	Wide inner ring bearing number	Disc harrow bearing number
40-MS 40-MST	RA008-RRB RA010-RRB		
47-MS 47-MST 47-MSTR	RA012-RRB RA012-RRB RA012-RRB	1012-KRRB	
52-MS 52-MST 52-MSTR	RA014-RRB RA015-RRB RA100-RRB	1014-KRRB 1100-KRRB	
① G52-MSA	◇ GRA014-RRB GRA015-RRB ◇ GRA100-RRB	G1013-KRRB G1014-KRRB G1015-KRRB * G1100-KRRB	
62-MS 62-MST 62-MSTR	RA101-RRB RA102-RRB RA103-RRB RA103-RRB2	1102-KRRB 1103-KRRB 1103-KRRB3	

① Relubricatable. ◇ Also available with set screw locking collar, in narrow and wide inner ring designs.

* Also available with triple-lip seal design.

(Cont.)

20

Mounting flange to adapter bearing chart - *cont.*

Mounting flange number	Extended inner ring (narrow) bearing number	Wide inner ring bearing number	Disc harrow bearing number
① G62-MSA	◇ GRA102-RRB ◇ GRA103-RRB ◇ GRA103RRB2	G1101-KRRB * G1102-KRRB * G1103-KRRB * G1103KRRB3	
72-MS 72-MST	RA104-RRB RA105-RRB RA106-RRB RA107-RRB	1104-KRRB 1106-KRRB 1107-KRRB	
① G72-MSA	◇ GRA104-RRB ◇ GRA106-RRB ◇ GRA107-RRB	* G1104-KRRB * G1105-KRRB * G1106-KRRB * G1107-KRRB	
80-MS	RA108-RRB	* 1108-KRRB	W208-PPB5 W208-PPB6 W208-PPB7 W208-PPB13 W208-PPB23

① Relubricatable. ◇ Also available with set screw locking collar, in narrow and wide inner ring designs.

* Also available with triple-lip seal design.

(Cont.)

Mounting flange to adapter bearing chart - *cont.*

Mounting flange number	Extended inner ring (narrow) bearing number	Wide inner ring bearing number	Disc harrow bearing number
① G80-MSA	◇ GRA108-RRB	G1108-KRRB	GW208-PPB5 GW208-PPB6 GW208-PPB8 209-KRRBA
85-MS	RA110-RRB RA111-RRB RA112-RRB	1110-KRRB 1112-KRRB	W209-PPB2 W209-PPB4 W209-PPB5 209-KRRB2
① G85-MSA	◇ GRA111-RRB ◇ GRA112-RRB	* G1110-KRRB * G1111-KRRB * G1112-KRRB	GW209-PPB2 GW209-PPB4 GW209-PPB5 GW209-PPB8 GW209PPB11
87-MS			W208-PPB3 W208-PPB6 W208-PPB11 W208-PPB12 W209PPB10 W209-PPB6E

① Relubricatable. ◇ Also available with set screw locking collar, in narrow and wide inner ring designs.

* Also available with triple-lip seal design.

(Cont.)

Mounting flange to adapter bearing chart - *cont.*

Mounting flange to adapter bearing chart - *cont.*

Mounting flange number	Extended inner ring (narrow) bearing number	Wide inner ring bearing number	Disc harrow bearing number
90-MS	RA115-RRB RA115-RRB2	1115-KRRB	W210-PPB2 W210-PPB4 W210-PPB5 W210-PPB6
① G90-MSA	GRA115-RRB GRA115RRB2	G1114-KRRB G1115-KRRB	GW210-PPB2 GW210-PPB4 GW210-PPB5 W210-PPB5
100-MS	RA200-RRB	1200-KRRB	W211-PPB2 W211-PPB3 W211-PPB4 W211-PPB6
① G100-MSA	GRA200-RRB GRA203-RRB	* G1200-KRRB * G1203-KRRB	GW211-PPB2 GW211-PPB3 GW211-PPB9 GW211PPB13

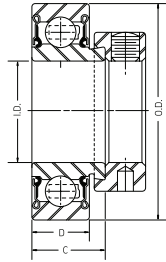
① Relubricatable.

◇ Also available with set screw locking collar, in narrow and wide inner ring designs.

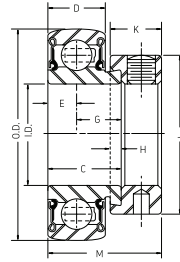
* Also available with triple-lip seal design.

Mounting flange to adapter bearing chart - *cont.*

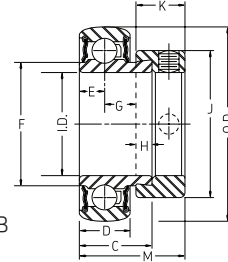
Narrow adapter bearings



RA-RR two seals
Cylindrical O.D.



RA-RRB two seals
Spherical O.D.



RAL-PPB

Cylindrical O.D.	Spherical O.D.	Bore		O.D.	Ring widths		Basic outer ring size	Collar	"E"	"F"	"G"	"H"	"J"	"K"	"M"
					Inner	Outer									
RA008-RR	RA008-RRB	1/2	.5000	1.5748	.7500	.5120	203	S1008-K	.2560		.4940	5/32	1-1/8	17/32	1-1/8
RA010-RR	RA010-RRB	5/8	.6250	1.5748	.7500	.5120	203	S1010-K	.2560		.4940	5/32	1-1/8	17/32	1-1/8
	RAL010-PPB	5/8	.6250	1.3780	.6250	.4330	6002		.2166	.7900	.4084	5/32	1	7/16	15/16
RA012-RR	RA012-RRB	3/4	.7500	1.8504	.8440	.5910	204	S1012-K	.2950		.5480	5/32	1-5/16	17/32	1-7/32
	RAL012-PPB	3/4	.7500	1.6540	.6563	.4720	6004		.2362	.9900	.4198	1/8	1-11/16	7/16	31/32
RA014-RR	RA014-RRB	7/8	.8750	2.0472	.8440	.5910	205	S1014-K	.2560		.5480	5/32	1-1/2	17/32	1-7/32
RA015-RR	RA015-RRB	15/16	.9380	2.0472	.8440	.5910	205	S1015-K	.2950		.5480	5/32	1-1/2	17/32	1-7/32
RA100-RR	RA100-RRB	1	1.0000	2.0470	.8440	.5910	205	S1100-K	.2950		.5480	5/32	1-1/2	17/32	1-7/32
	RAL100-PPB	1	1.0000	1.8500	.6875	.4720	6005		.2360	1.1680	.4518	5/32	1-27/32	15/32	1
	RA101-RRB	1-1/16	1.0625	2.4410	.9380	.7090	206	S1101-K	.3540		.5830	5/32	1-3/4	5/8	1-13/32

(Cont.)

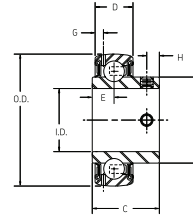
Adapter bearings

Narrow adapter bearings - cont.

Cylindrical O.D.	Spherical O.D.	Bore		O.D.	Ring widths		Basic outer ring size	Collar	"E"	"F"	"G"	"H"	"J"	"K"	"M"
					Inner	Outer									
RA102-RR	RA102-RRB	1-1/8	1.1250	2.4410	.9380	.7090	206	S1102-K	.3540		.5830	5/32	1-3/4	5/8	1-13/32
RA103-RR	RA103-RRB	1-3/16	1.1880	2.4410	.9380	.7090	206	S1103-K	.3540		.5830	5/32	1-3/4	5/8	1-13/32
RA103-RR2	RA103-RRB2	1-1/4	1.2500	2.4410	.9380	.7090	206	S1103-K3	.3540		.5830	5/32	1-3/4	5/8	1-13/32
RA104-RR	RA104-RRB	1-1/4	1.2500	2.8350	1.0000	.7480	207	S1104-K	.3740		.6260	5/32	2-1/8	43/64	1-17/32
	RA105-RRB	1-5/16	1.3130	2.8350	1.0000	.7480	207	S1105-K	.3740		.6260	5/32	2-1/8	43/64	1-17/32
RA106-RR	RA106-RRB	1-3/8	1.3750	2.8346	1.0000	.7480	207	S1106-K	.3740		.6260	5/32	2-1/8	43/64	1-17/32
RA107-RR	RA107-RRB	1-7/16	1.4380	2.8350	1.0000	.7480	207	S1107-K	.3740		.6260	5/32	2-1/8	43/64	1-17/32
RA108-RR	RA108-RRB	1-1/2	1.5000	3.1500	1.8880	.8660	208	S1108-K	.4330		.7550	3/16	2-3/8	23/32	1-23/32
	RA110-RRB	1-5/8	1.6250	3.3460	1.1880	.8660	209	S1110-K	.4330		.7550	3/16	2-1/2	23/32	1-23/32
	RA111-RRB	1-11/16	1.6880	3.3460	1.1880	.8660	209	S1111-K	.4330		.7550	3/16	2-1/2	23/32	1-23/32
RA112-RR	RA112-RRB	1-3/4	1.7500	3.3460	1.1880	.8660	209	S1112-K	.4330		.7550	3/16	2-1/2	23/32	1-23/32
RA115-RR	RA115-RRB	1-15/16	1.9380	3.5430	1.1880	.8660	210	S1115-K	.4330		.7550	3/16	2-3/4	23/32	1-23/32
	RA115-RRB2	2	2.0000	3.5430	1.1880	.8660	210	S1115-K2	.4330		.7550	3/16	2-3/4	23/32	1-23/32
	RA200-RRB	2	2.0000	3.9370	1.2810	.9450	211	S1200-K	.4720		.8090	3/16	3	13/16	1-29/32

Adapter bearings - cont.

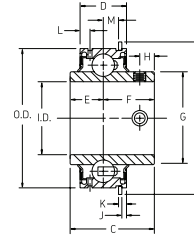
Narrow adapter bearings with set screw locking collar



Spherical O.D.	Bore		O.D.	Ring widths		Basic outer ring size	"E"	"F"	"G"	"H"
				Inner	Outer					
GYA010-RRB	5/8	.6250	1.5748	.9380	.4720	G203	.3130	.9688	.1070	.1870
GYA012-RRB	3/4	.7500	1.8504	1.0630	.5510	G204	.3490	1.1406	.1200	.2370
GYAE20-RRB	20mm	.7874	1.8504	1.0630	.5510	G204	-	1.1406	.1200	.2370
GYA014-RRB	7/8	.8750	2.0472	1.1090	.5910	G205	.3480	1.3281	.1420	.2500
GYA015-RRB	15/16	.9375	2.0472	1.1090	.5910	G205	.3480	1.3281	.1420	.2500
GYA100-RRB	1	1.0000	2.0472	1.1090	.5910	G205	.3480	1.3281	.1420	.2500
GYA102-RRB	1-1/8	1.1250	2.4409	1.2810	.7090	G206	.3800	1.5781	.1640	.3100
GYA103-RRB	1-3/16	1.1875	2.4409	1.2810	.7090	G206	.3800	1.5781	.1640	.3100
GYA103RRB2	1-1/4	1.2500	2.4409	1.2810	.7090	G206	.3800	1.5781	.1640	.3100
GYA104-RRB	1-1/4	1.2500	2.8346	1.4440	.7480	G207	.4270	1.8437	.1450	.3100
GYA106-RRB	1-3/8	1.3750	2.8346	1.4440	.7480	G207	.4270	1.8437	.1450	.3100
GYA107-RRB	1-7/16	1.4375	2.8346	1.4440	.7480	G207	.4270	1.8437	.1450	.3100
GYA108-RRB	1-1/2	1.5000	3.1496	1.5380	.8660	G208	.4580	2.0625	.1640	.3100
GYA112-RRB	1-3/4	1.7500	3.3465	1.6550	.8861	G209	.5300	2.2813	.1790	.3100

Adapter bearings - cont.

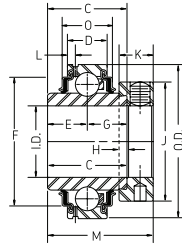
Relubricated adapter bearings with set screw lock (black oxide coated)



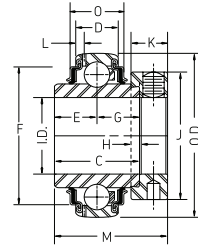
Adaptor brg. no.	I.D.	O.D.	Ring widths		Basic outer ring size	Collar	"E"	"F"	"G"	"H"	"J"	"K"	"L"	"M"
			Inner	Outer										
ER14	.8750	2.0472	1.3750	.7500	G205	-	.5625	.8125	1.3297	.2500	.1099	.0471	.1875	.1875
ER16	1.0000	2.0472	1.3750	.7500	G205	-	.5625	.8125	1.3281	.2500	.1094	.0469	.1875	.1875
ER19	1.1875	2.4409	1.5000	.8750	G206	-	.6094	.8906	1.5938	.2500	.1250	.0625	.1875	.2500
ER22	1.3750	2.8346	1.6875	.9375	G207	-	.6875	1.0000	1.8438	.3125	1.8438	.0625	.2188	.2813
ER27	1.6875	3.3465	1.9375	1.0938	G209	-	.7031	1.2344	2.2813	.3438	.1250	.0625	.2344	.4219

Adapter bearings - cont.

Relubricatable wide adapter bearings



G-KRR two seals
Cylindrical O.D.



G-KRRB two seals
Spherical O.D.

Cylindrical O.D.	Spherical O.D.	Bore	O.D.	Ring widths		Basic outer ring size	Collar	"E"	"F"	"G"	"H"	"J"	"K"	"L"	"M"	"O"
				Inner	Outer											
G1010-KRR	G1010-KRRB	5/8	1.5760	1.0938	.4720	G203	S1010-K	.5468	1.3390	.5468	5/32	1-1/8	17/32	.1070	1-15/32	.6520
	G1012-KRRB	3/4	1.8500	1.3437	.5510	G204	S1012-K	.6718	1.5320	.6718	5/32	1-5/16	17/32	.1350	1-23/32	.6810
	G1013-KRRB	13/16	2.0470	1.3750	.5910	G205	S1013-K	.6875	1.7790	.6875	5/32	1-1/2	17/32	.1520	1-3/4	.6560
	G1014-KRRB	7/8	2.0470	1.3750	.5910	G205	S1014-K	.6875	1.7790	.6875	5/32	1-1/2	17/32	.1520	1-3/4	.6560
	G1015-KRRB	15/16	2.0470	1.3750	.5910	G205	S1015-K	.6875	1.7790	.6875	5/32	1-1/2	17/32	.1520	1-3/4	.6560
G1100-KRR	G1100-KRRB	1	2.0470	1.3750	.5910	G205	S1100-K	.6875	1.7790	.6875	5/32	1-1/2	17/32	.1520	1-3/4	.6560
	G1101-KRRB	1-1/16	2.4409	1.4375	.7090	G206	S1101-K	.7187	2.0680	.7187	5/32	1-3/4	5/8	.1560	1-29/32	.8490
	G1102-KRRB	1-1/8	2.4410	1.4375	.7090	G206	S1102-K	.7187	2.0680	.7187	5/32	1-3/4	5/8	.1560	1-29/32	.8490
	G1103-KRRB	1-3/16	2.4410	1.4375	.7090	G206	S1103-K	.7187	2.0680	.7187	5/32	1-3/4	5/8	.1560	1-29/32	.8490
	G1103KRRB3	1-1/4	2.4410	1.4375	.7090	G206	S1103-K3	.7187	2.0680	.7187	5/32	1-3/4	5/8	.1560	1-29/32	.8490

(Cont.)

Adapter bearings - cont.

Relubricatable wide adapter bearings - cont.

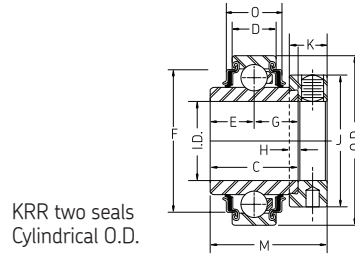
Cylindrical O.D.	Spherical O.D.	Bore	O.D.	Ring widths		Basic outer ring size	Collar	"E"	"F"	"G"	"H"	"J"	"K"	"L"	"M"	"O"
				Inner	Outer											
G1104-KRR	G1104-KRRB	1-1/4	2.8350	1.4375	.7480	G207	S1104-K	.7420	2.3840	.7420	5/32	2-1/8	43/64	.1450	2-1/64	.8560
	G1105-KRRB	1-5/16	2.8350	1.4375	.7480	G207	S1105-K	.7420	2.3840	.7420	5/32	2-1/8	43/64	.1450	2-1/64	.8560
	G1106-KRRB	1-3/8	2.8350	1.4375	.7480	G207	S1106-K	.7420	2.3840	.7420	5/32	2-1/8	43/64	.1450	2-1/64	.8560
G1108-KRR	G1107-KRRB	1-7/16	2.8350	1.4375	.7480	G207	S1107-K	.7420	2.3840	.7420	5/32	2-1/8	43/64	.1450	2-1/64	.8560
	G1108-KRRB	1-1/2	3.1496	1.6880	.8720	G208	S1108-K	.8437	2.6690	.8437	3/16	2-3/8	23/32	.1600	2-7/32	.9230
	G1109-KRRB	1-9/16	3.1496	1.6875	.8720	208	S1109-K	.8437		.8437	3/16	2-3/8	23/32		2-7/32	
	G1110-KRRB	1-5/8	3.3470	1.6875	.8660	G209	S1110-K	.8437	2.9080	.8437	3/16	2-1/2	23/32	.1790	2-7/32	1.0700
	G1111-KRRB	1-11/16	3.3465	1.6875	.8660	G209	S1111-K	.8437	2.9080	.8437	3/16	2-1/2	23/32	.1790	2-7/32	1.0700
G1112-KRR	G1112-KRRB	1-3/4	3.3465	1.6875	.8660	G209	S1112-K	.8437	2.9080	.8437	3/16	2-1/2	23/32	.1790	2-7/32	1.0700
	G1114-KRRB	1-7/8	3.5433	1.9375	.9060	G210	S1114-K	.9687	3.0590	.9687	3/16	2-3/4	23/32	.1850	2-15/32	1.0830
	G1115-KRRB	1-15/16	3.5433	1.9375	.9060	G210	S1115-K	.9687	3.0590	.9687	3/16	2-3/4	23/32	.1850	2-15/32	1.0830
	G1200-KRRB	2	3.9370	2.1875	.9840	G211	S1200-K	1.0937	3.4320	1.0937	3/16	3	13/16	.1970	2-13/16	1.1420
	G1203-KRRB	2-3/16	3.9370	2.1875	.9840	G211	S1203-K	1.0937	3.4320	1.0937	3/16	3	13/16	.1970	2-13/16	1.1420
	GN203-KRRB	2-3/16	4.7244	2.1875	1.2205	G311	SN203-K	1.0938		1.1562	3/16	3-1/4	7/8	.2160	2-7/8	
	G1207-KRRB	2-7/16	4.3307	2.4375	1.0236	G212	S1207-K	1.2187	3.7360	1.2187	1/4	3-5/16	7/8	.2020	3-1/16	1.3790

Note: These Spherical bearings are also available with *triple-lip seal design*: G1100-KRRB, G1102-KRRB, G1103-KRRB, G1103KRRB3, G1104-KRRB, G1106-KRRB, G1107-KRRB, G1110-KRRB, G1111-KRRB, G1112-KRRB, G1115-KRRB, G1200-KRRB and G1203-KRRB.

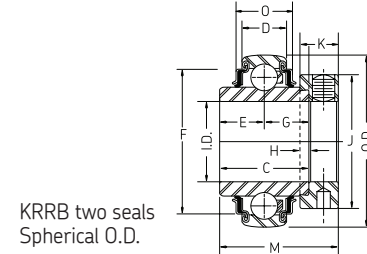
Note: These Spherical bearings are also available with *set screw locking collar*: G1010-KRRB, G1012-KRRB, G1014-KRRB, G1015-KRRB, G1100-KRRB, G1101-KRRB, G1102-KRRB, G1103-KRRB, G1104-KRRB, G1105-KRRB, G1106-KRRB, G1107-KRRB, G1108-KRRB, G1110-KRRB, G1111-KRRB, G1112-KRRB, G1114-KRRB, G1115-KRRB, G1200-KRRB and G1203-KRRB.

Adapter bearings - cont.

Non-relubricatable wide adapter bearings



KRR two seals
Cylindrical O.D.



KRRB two seals
Spherical O.D.

Cylindrical O.D.	Spherical O.D.	Bore	O.D.	Ring widths		Basic outer ring size	Collar	"E"	"F"	"G"	"H"	"J"	"K"	"M"	"O"	"P"
				Inner	Outer											
1012-KRR	1012-KRRB	3/4	1.8500	1.3438	.5510	204	S1012-K	.6718	1.5320	.6720	5/32	1-5/16	17/32	1-23/32	.6520	.6020
1012-KRRB3		3/4	1.8504	1.3440	.5510	204										
1014-KPPB3		7/8	2.0472	1.3750	1.3750	205	S1014-K									
1014-KRR	1014-KRRB	7/8	2.0470	1.3750	.5910	205	S1014-K	.6875	1.7790	.6875	5/32	1-1/2	17/32	1-3/4	.6560	
	1015-KRRB	15/16	2.0472	1.3750	.5910	205	S1015-K	.6875	1.7790	.6875	5/32	1-1/2	17/32	1-3/4	.6560	.6230
1100-KRRB		1	2.0470	1.3750	.5910	205	S1100-K	.6875	1.7790	.6875	5/32	1-1/2	17/32	1-3/4	.6560	.6230
	1102-KRRB	1-1/8	2.4410	1.4375	.6300	206	S1102-K	.7187	2.0680	.7187	5/32	1-3/4	5/8	1-29/32	.7700	.7000
1103-KRR	1103-KRRB	1-3/16	2.4410	1.4375	.6300	206	S1103-K	.7187	2.0680	.7187	5/32	1-3/4	5/8	1-29/32	.7700	.7000

Adapter bearings - cont.

(Cont.)

Non-relubricatable wide adapter bearings - cont.

Cylindrical O.D.	Spherical O.D.	Bore	O.D.	Ring widths		Basic outer ring size	Collar	"E"	"F"	"G"	"H"	"J"	"K"	"M"	"O"	"P"
				Inner	Outer											
1103-KRR3	1103-KRRB3	1-1/4	2.4410	1.4375	.6300	206	S1103-K3	.7187	2.0680	.7187	5/32	1-3/4	5/8	1-29/32	.7700	.7000
1104-KRR	1104-KRRB	1- 1/4	2.8350	1.4844	.6690	207	S1104-K	.7420	2.3840	.7420	5/32	2-1/8	43/64	2-1/64	.7550	.7220
1106-KRR	1106-KRRB	1-3/8	2.8350	1.4844	.6690	207	S1106-K	.7420	2.3840	.7420	5/32	2-1/8	43/64	2-1/64	.7550	.7220
1107-KRR	1107-KRRB	1-7/16	2.8350	1.4844	.6690	207	S1107-K	.7420	2.3840	.7420	5/32	2-1/8	43/64	2-1/64	.7550	.7220
1108-KRR	1108-KRRB	1-1/2	3.1500	1.6875	.7090	208	S1108-K	.8437	2.6690	.8437	3/16	2-3/8	23/32	2-7/32	.8050	.7570
	1110-KRRB	1-5/8	3.3470	1.6875	.7480	209	S1110-K	.8437	2.9080	.8437	3/16	2-1/2	23/32	2-7/32	.9520	.8500
1111-KRR		1-11/16	3.3470	1.6875	.7480	209	S1111-K	.8437	2.9080	.8437	3/16	2-1/2	23/32	2-7/32	.9520	.8500
1112-KRR	1112-KRRB	1-3/4	3.3470	1.6875	.7480	209	S1112-K	.8437	2.9080	.8437	3/16	2-1/2	23/32	2-7/32	.9520	.8500
1114-KRR		1-7/8	3.5433	1.9375	.7870	210	S1114-K	.9687	3.0590	.9687	3/16	2-3/4	23/32	2-15/32	.9650	.8760
1115-KRR	1115-KRRB	1-15/16	3.5430	1.9375	.7870	210	S1115-K	.9687	3.0590	.9687	3/16	2-3/4	23/32	2-15/32	.9650	.8760
	1200-KRRB	2	3.9370	2.1875	.8270	211	S1200-K	1.0937	3.4320	1.0937	3/16	3	13/16	2-13/16	1.0790	.9530

Adapter bearings - cont.

Locking collar to mounted unit chart

Locking collar	VAK series	RAK series	PB series	VCJ series	RCJ series	VCJT series	RCJT series	VAS series
S1008-K		† RAK 1/2						
S1010-K	VAK 5/8	† RAK 5/8	PB 5/8			◇ VCJT 5/8		
S1011-K		RAK 11/16						
S1012-K	VAK 3/4	† RAK 3/4 † RAK 13/16	PB 3/4		◇ RCJ 3/4	◇ VCJT 3/4	◇* RCJT 3/4	
S1014-K	VAK 7/8	† RAK 7/8				◇ VCJT 7/8		
S1015-K	VAK 15/16	† RAK 15/16		VCJ 15/16	RCJ 15/16			
S1100-K	VAK 1	†* RAK 1	PB 1	VCJ 1	◇* RCJ 1	◇* VCJT 1	◇* RCJT 1	VAS1
S1101-K								
S1102-K	VAK 1-1/8	†* RAK 1-1/8			RCJ 1-1/8	◇* VCJT 1-1/8		
S1103-K	VAK 1-3/16M	†* RAK 1-3/16M			◇* RCJ 1-3/16M	VCJT 1-3/16		
S1103-K3	VAK 1-1/4S			VCJ 1-1/4S				
S1104-K	VAK 1-1/4	†* RAK 1-1/4		VCJ 1-1/4	◇* RCJ 1-1/4	◇* VCJT 1-1/4	◇* RCJT 1-1/4	
S1105-K								
S1106-K	VAK 1-3/8	†* RAK 1-3/8		VCJ 1-3/8	◇* RCJ 1-3/8	◇* VCJT 1-3/8	◇* RCJT 1-3/8	

◇ Also available with set screw. * Also available with triple-lip seal design. † Also available with high centerline (i.e. RAS).

(Cont.)

32

Locking collar to mounted
unit chart

Locking collar to mounted unit chart - *cont.*

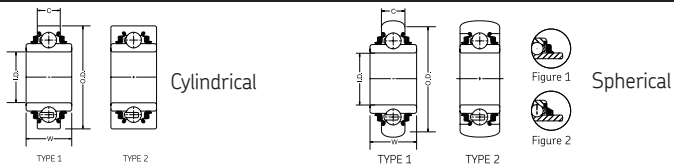
Locking collar	VAK series	RAK series	PB series	VCJ series	RCJ series	VCJT series	RCJT series	VAS series
S1107-K	VAK 1-7/16	†* RAK 1-7/16		VCJ 1-7/16	◇* RCJ 1-7/16	◇* VCJT 1-7/16	◇* RCJT 1-7/16	
S1108-K	VAK 1-1/2	†* RAK 1-1/2		VCJ 1-1/2	◇* RCJ 1-1/2	◇* VCJT 1-1/2	◇* RCJT 1-1/2	
S1110-K		†* RAK 1-5/8			RCJ 1-9/16			
S1111-K		†* RAK 1-11/16			* RCJ 1-5/8			
					* RCJ 1-11/16			
S1112-K		†* RAK 1-3/4		VCJ 1-3/4	◇* RCJ 1-3/4	* VCJT 1-3/4	* RCJT 1-3/4	
S1114-K		† RAK 1-7/8						
S1115-K		†* RAK 1-15/16			* RCJ 1-15/16		RCJT 1-15/16	
S1200-K		†* RAK 2			* RCJ 2			
S1203-K		†* RAK 2-3/16			* RCJ 2-3/16			
S1207-K		† RAK 2-7/16			RCJ 2-7/16			

◇ Also available with set screw. * Also available with triple-lip seal design. † Also available with high centerline (i.e. RAS).

Locking collar to mounted
unit chart - *cont.*

Disc harrow bearings

Triple lip seal, non-relubricatable, square bore



Cylindrical O.D.	Spherical O.D.	Bore		O.D.	Ring widths		Ball qty.	Ball size	Stamp size	Type
					Inner	Outer				
W208-PP6	W208-PPB11	7/8	.8750	3.4380	1.4375	1.1875	9	15/32	87MS	2-2
	W208-PPB13	7/8	.8750	3.1500	1.4380	.7090	9	1/2	80MS	1-1
W208-K2	■ W208-PPB6	1	1.0000	3.1500	1.4380	.7090	9	1/2	80MS	1-1
		1	1.0000	3.1496	1.6875	.7090	9	1/2	-	1
W210-PP4	W210-PPB6	1-1/8	1.1250	3.5430	1.4380	1.1880	9	1/2	90MS	1
	■ W210-PPB4	1-1/8	1.1250	3.5433	1.1875	1.1875	10	1/2	90MS	2
W208-K3		1-1/8	1.1250	3.1500	1.6875	1.2480	9	15/32	-	1
	W208-PPB12	1-1/8	1.1250	3.4340	1.4375	1.1880	9	15/32	87MS	2-2
W208-PP5	W208-PPB5	1-1/4	1.1250	3.1500	1.4380	.7090	9	1/2	80MS	1-1
		1-1/4	1.1250	3.1500	1.4380	1.1880	9	1/2	-	1-1
W208-PP8	■ W209-PPB5	1-1/4	1.2500	3.3470	1.4380	1.1880	9	1/2	85MS	1-2
	W209-PPB7	1-1/4	1.2500	3.4380	1.4375	1.1875	10	15/32	87MS	1-2
	W211-PPB6	1-1/2	1.5000	4.0770	1.7500	1.4375	10	9/16	100MS	1-2
W211-PP3	■ W211-PPB3	1-1/2	1.5000	3.9370	1.3120	1.3120	10	9/16	100MS	2-2
	W211-PP5	1-1/2	1.5000	4.0000	1.7500	1.4380	10	9/16	-	1-2

■ Also available with relubricatable design.

Disc harrow bearings

Triple lip seal, non-relubricatable, round bore

Cylindrical O.D.	Spherical O.D.	Bore	O.D.	Ring widths		Ball qty.	Ball size	Stamp size	Type
				Inner	Outer				
W208-PP10	W208-PPB23	1.5010	3.1500	1.6880	1.1880	9	15/32	80MS	1-1
	W208-PPB7	1.1880	3.1500	1.1880	.7090	9	1/2	80MS	1-1
		1.5000	3.1500	1.6880	.8270	9	1/2	-	1-1
	W208-PPB3	1.5250	3.4380	1.4375	1.1880	9	15/32	87MS	1-1
	■ W209-PPB2	1.7720	3.3460	1.1880	1.1880	9	1/2	85MS	2-2
	■ W209-PPB4	1.5350	3.3460	1.1880	1.1880	9	1/2	85MS	2-2
	W209-PPB6E	1.7690	3.3410	1.6870	1.3120	10	15/32	87MS	2-2
W210-PP	W209PPB10	1.5350	3.4380	1.8750	1.1875	10	15/32	87MS	2-2
		1.9380	3.5433	1.9375	.7874	10	1/2	-	1
W210-PP2	W210-PPB2	1.9380	3.5430	1.1880	1.1880	10	1/2	90MS	2
W211-PP2	■ W210-PPB5	1.7850	3.5430	1.1880	1.1880	10	1/2	90MS	2
	■ W211-PPB2	2.1880	3.9370	1.3120	1.3120	10	9/16	100MS	2-2
	W211-PPB4	2.1880	3.9370	2.1870	1.3120	10	9/16	100MS	2-2

■ Also available with relubricatable design.

Triple lip seal series

Square bore - relubricatable type

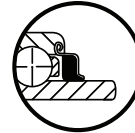
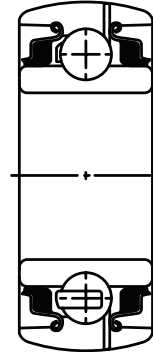
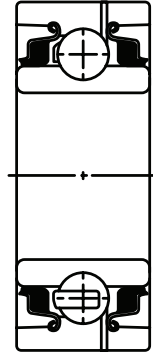
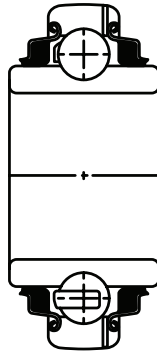
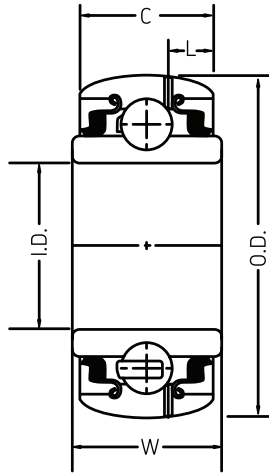


FIGURE 1



FIGURE 2

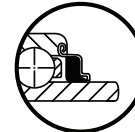


FIGURE 3

Disc harrow bearings - cont.

Triple lip seal, relubricatable, square bore

Cylindrical O.D.	Spherical O.D.	Bore	O.D.	Ring widths		Ball qty.	Ball size	Type
				Inner	Outer			
GW210-PP4 (3) GW208-PP17 GW211-PP17	GW208-PPB6	1.0000	3.1500	1.4380	.8270	9	1/2	2-1
	GW208-PPB5	1.1250	3.1500	1.4380	.8270	9	1/2	2-1
	GW208-PPB8	1.1250	3.1500	1.4380	1.1880	9	1/2	1-1
	GW210-PPB4	1.1250	3.5430	1.1880	1.1880	10	1/2	4
			1.1250	3.3760	1.4380	1.1880	9	1/2
GW209-PP8 (3-2) GW211-PP3		1.1500	3.9370	1.7500	1.3120	10	9/16	3-2
	GW209-PPB5	1.2500	3.3470	1.4380	1.1880	9	1/2	1-2
	GW209-PPB8	1.2500	3.3470	1.4380	.8660	9	1/2	3-2
	GW211-PPB3	1.5000	3.9370	1.3120	1.3120	10	9/16	4-2
		GW209PPB11	1.7810	3.3465	1.4380	.8660	9	1/2
GW216-PP2	GW214-PPB4	2.0000	4.9210	1.5620	1.5620	10	11/16	4
		2.2500	5.5118	2.5000	1.1810	11	23/32	2-3

Disc harrow bearings - cont.

Triple lip seal series

Round bore - relubricatable type

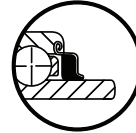
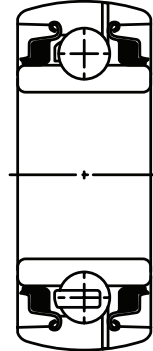
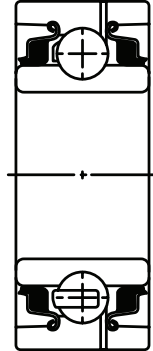
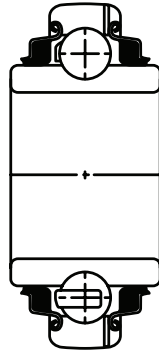
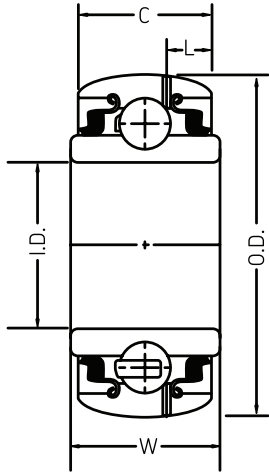


FIGURE 1



FIGURE 2

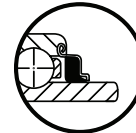


FIGURE 3

Disc harrow bearings - cont.

(Cont.)

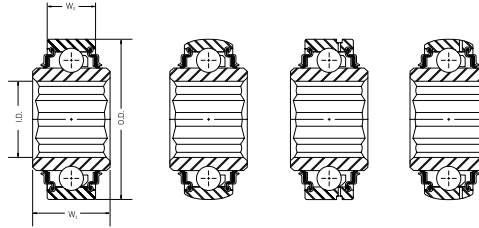
Triple lip seal, relubricatable, round bore

Cylindrical O.D.	Spherical O.D.	Bore	O.D.	Ring widths		Ball qty.	Ball size	Type
				Inner	Outer			
GW210-PP3		1.4070	3.543	1.1880	1.1880	10	1/2	3
	GW209PPB6P	1.5350	3.492	1.6875	1.2500	10	15/32	2-2
	GW209-PPB4	1.5350	3.347	1.1880	1.1880	9	1/2	4-2
	GW209-PPB2	1.7720	3.347	1.1880	1.1880	9	1/2	4-2
	GW209PPB11	1.7810	3.347	1.4380	.8660	9	1/2	2-2
	GW210-PPB5	1.7850	3.543	1.1880	1.1880	10	1/2	4
GW211-PP25		1.7850	3.937	1.7500	1.3125	10	9/16	3
	GW211PPB13	1.7850	3.937	1.3120	.9840	10	9/16	2-2
	GW210-PPB2	1.9380	3.543	1.1880	1.1880	10	1/2	4
GW210-PP9		1.9450	3.543	1.4380	.9060	10	1/2	2
	GW211PPB14	2.0150	3.937	1.3120	.9840	10	9/16	2-2
GW211-PP2 (3-2)	GW211-PPB2	2.1880	3.937	1.3120	1.3120	10	9/16	3-2
	GW211-PPB8	2.1880	3.937	1.3120	.9840	10	9/16	2-2
	GW211-PPB9	2.1950	3.937	1.5620	.9840	10	9/16	2-2
GW214-PP2 (3)	GW214-PPB2	2.7560	4.921	1.5620	1.5620	10	11/16	3
	GW214-PPB5	2.7560	4.921	2.4280	1.5620	10	11/16	1

Disc harrow bearings - cont.

Hex bore series

Non-relubricatable type

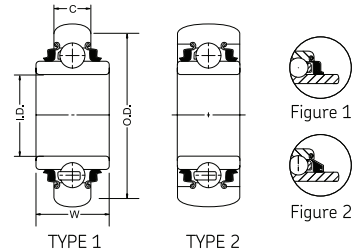


Cylindrical O.D.	Spherical O.D.	Bore		O.D.	Ring widths		Type	Hex flat	Hex I.D.
					Inner	Outer			
202-KRR3		9/16	.5630	1.3780	.5120	.4330	1	.563	9/16
204-KRR2			.6950	1.8500	.8250	.5510	1	.695	11/16
205-KRR2 (1)	205-KRRB2 206-KPPB5	7/8	.8760	2.0470	1.0000	.5910	1	.876	7/8
		1	1.0000	2.4409	1.0600	.6300	2	1.001	1
206-KPP3 (1)		1	1.0010	2.4410	.9450	.6300	1	1.001	1
206-KRR6 (1)	206-KRRB6 207-KPPB3	1	1.0000	2.4410	.9450	.6300	1	1.001	1
		1-1/4	1.2500	2.8346	1.4840	.6690	2	1.251	1-1/4
207-KRRB17		1-1/4	1.2510	2.8346	.7480	.9840	1	1.251	1-1/4
	W208-PPB16 209-KRRBA 209-KRRBB 209-KRRB2	1-1/4	1.2500	3.1496	1.4380	.7090	4	1.251	1-1/4
		1-1/2	1.5000	3.3470	1.1810	.8660	2	1.503	1-1/2
		1-1/2	1.5000	3.5430	1.1811	.8660	2	.000	1-1/2
	1-1/2	1.5000	3.3465	1.1811	.7480	2	1.503	1-1/2	

Disc harrow bearings - cont.

Disc harrow spherical O.D.

Square bore - relubricatable type



Bore		O.D.	Ring widths		Spherical O.D.	Ball qty.	Ball size	Stamp size	Type
			Inner	Outer					
7/8	.8750	3.4380	1.4375	1.1875	W208-PPB11	9	15/32	87MS	2-2
7/8	.8750	3.1500	1.4380	.7090	W208-PPB13	9	1/2	80MS	1-1
1	1.0000	3.1500	1.4380	.7090	■ W208-PPB6	9	1/2	80MS	1-1
1-1/8	1.1250	3.1500	1.4380	.7090	■ W208-PPB5	9	1/2	80MS	1-1
1-1/8	1.1250	3.4340	1.4375	1.1880	W208-PPB12	9	15/32	87MS	2-2
1-1/8	1.1250	3.5430	1.4380	1.1880	W210-PPB6	9	1/2	90MS	1
1-1/8	1.1250	3.5430	1.1880	1.1880	■ W210-PPB4	9	1/2	90MS	2
1-1/4	1.2500	3.3470	1.4380	1.1880	■ W209-PPB5	9	1/2	85MS	1-2
1-1/2	1.5000	3.9370	1.3120	1.3120	■ W211-PPB3	10	9/16	100MS	2-2
1-1/2	1.5000	4.0770	1.7500	1.4375	W211-PPB6	10	9/16	100MS	1-2

■ Also available with relubricatable design.

Disc harrow spherical O.D.

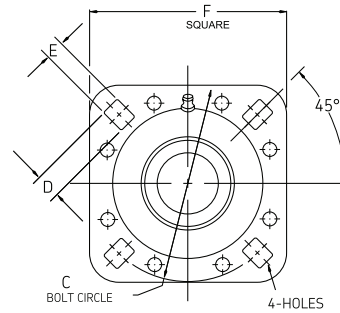
Round bore - non-relubricatable type

Bore	O.D.	Ring widths		Spherical O.D.	Ball qty.	Ball size	Stamp size	Type
		Inner	Outer					
1.1880	3.1500	1.1880	.7090	W208-PPB7	9	1/2	80MS	1-1
1.5010	3.1500	1.6880	1.1880	W208-PPB23	9	15/32	80MS	1-1
1.5250	3.4380	1.4375	1.1880	W208-PPB3	9	15/32	87MS	1-1
1.5350	3.3460	1.1880	1.1880	W209-PPB4	9	1/2	85MS	2-2
1.7690	3.3410	1.6870	1.3120	W209-PPB6E	10	15/32	87MS	2-2
1.7720	3.3460	1.1880	1.1880	■ W209-PPB2	9	1/2	85MS	2-2
1.7850	3.5430	1.1880	1.1880	■ W210-PPB5	10	1/2	90MS	2
1.9380	3.5430	1.1880	1.1880	■ W210-PPB2	10	1/2	90MS	2
2.1880	3.9370	1.3120	1.3120	W211-PPB2	10	9/16	100MS	2-2
2.1880	3.9370	2.1870	1.3120	W211-PPB4	10	9/16	100MS	2-2

■ Also available with relubricatable design.

Disc harrow spherical O.D.
- cont.

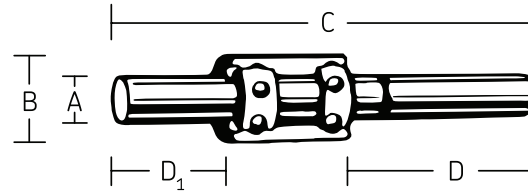
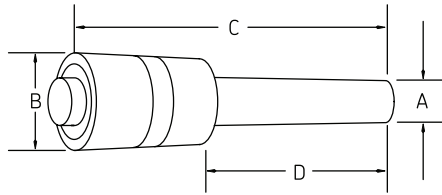
Triple lip seal series disc harrow units



Round bore		Square bore	
I.D.	Part number	I.D.	Part number
1.5000	DHU 1-1/2R	1.1250	DHU 1-1/8
1.7500	DHU 1-3/4E	1.2500	DHU 1-1/4
1.7500	DHU491-A		
1.9385	DHU211-RJA		

Triple lip series disc
harrow units

Water pump bearings



Shaft size (A)	O.D. (B)	Length (C)	(D)	(D ₁)	Part number	Type
.6267	1.1811	3.8500	2.1560		885151-E	W1
.6267	1.1811	2.8201	1.2500		BR885152	W1
.6267	1.1811	2.9050	1.2130		885154-B	W1
.6267	1.1811	3.2500	1.5630		885165-1	W1
.6267 (D ₁)	1.5000	5.7400	1.8550	1.7600	BR885802	W2

D₁ shaft extension .7465 diameter.

Special bearings

Shaft size	O.D.	Inner ring width	Outer ring width	Part number
.3937	1.1811	.4800	.5000	200-KTD
.5000	1.1250	.3750	.3750	407-22V
.5000	1.3750	.4370	.4370	408-28V
.5000	1.5000	.4331	.4331	202-NPP9
.5000	1.3750	.4370	.4370	410-30V4
.5000	1.1250	.3750	.3750	1616-DCTN
.5000	1.3750	.4370	.4370	1621-DCTN
.5150	1.5750	.7200	.4720	203-KRR5
.5906	1.3780	.8800	.4331	J202-KRR8
.5906	1.3750	.4331	.4331	202-NPPB
.6250	1.3750	.4370	.4370	410-30V
.6250	1.3750	.4331	.4331	6202-FFB
.6250	1.3750	.4331	.4331	6202-FFLB
.6250	2.0472	1.3750	.5906	205-PP10
.6250	1.3750	.4375	.4375	1623-DCTN

Special bearings - *cont.*

Shaft size	O.D.	Inner ring width	Outer ring width	Part number
.6250	1.3780	.4330	.4330	202-NPP5
.6255	1.5748	.4724	.4724	P203-PP10
.6260	2.0000	.5906	.5906	P203-KRR3
.6260	1.7805	.6100	.6100	204-RR8
.6275	1.8490	.6860	.5490	H204-RR11
.6290	1.8500	.6860	.5512	204-KRD4
.6300	1.3780	.4331	.4331	202-NPP8
.6310	1.7810	.7350	.6100	204-RY2
.6320	1.7805	.7350	.6100	6204-FREN
.6400	1.5750	.7200	.4724	203-KRR2
.6400	1.5748	.7200	.4724	203-KRR2N
.6400	1.5748	1.7300	1.5330	5203-KYY2
.6400	1.8500	.7200	.4724	203-KRR6
.6693	1.5748	.5512	.0000	6203-VSP14
.6693	1.5748	.4724	.4724	203-NPPB
.7500	1.7500	.5000	.5000	6203-FFA
.7500	2.0472	1.3750	.5906	205-PP9
.7500	2.0472	.8300	.5906	205-KRP2
.7500	1.7805	.6100	.6100	204-RR7
.7500	1.8504	1.2030	.5906	6204-TTM

Special bearings - *cont.*

(Cont.)

Special bearings - *cont.*

Shaft size	O.D.	Inner ring width	Outer ring width	Part number
.7500	1.5740	.4700	.4700	6203-RR12
.7500	1.6250	.5000	.5000	1630-DCTN
.7510	2.0472	.6400	.7000	205-KR3
.7510	2.0472	.9210	.7000	205-KP6
.7510	1.7810	.6100	.6100	P204-RR6
.7510	2.0472	.8280	.5906	6205-RVA
.7510	2.0472	.7160	.5906	6205-TNK
.7550	2.4409	.9450	.6300	206-KRR13
.7560	2.4409	.9449	.6299	6206-GGH
.7874	1.6535	.4724	.4724	9104-KDD
.7870	1.8500	.5510	.5512	204-NPPB
.7874	1.8504	.6250	.5512	BR87504
.9430	2.0472	1.3750	.5906	205-PPB7
.9700	2.4409	.8750	.7087	206-KPR4
.9843	2.0472	.5906	.5906	205-NPPB
.9843	2.4409	.6693	.6693	305-NPPB
1.0000	2.0472	1.1875	.5906	205-PP11
1.1810	2.4410	.6300	.6300	206-NPPB
1.1811	2.4409	.9450	.6300	206-KRR8
1.2500	2.8350	.9840	.6690	207-KRR14

Special bearings - *cont.*

(Cont.)

Special bearings - *cont.*

Shaft size	O.D.	Inner ring width	Outer ring width	Part number
1.2500	2.8346	1.4840	.7480	G207-KPPB2
1.3780	2.8346	.6693	.6693	207-NPPB
1.3780	2.8350	.9840	.6693	A88107-BVV
1.5000	3.1496	1.0625	.7087	208-KP2
1.5750	3.1500	.7087	.7087	208-NPPB
1.7717	3.3465	.7480	.7480	S6209-2RSJ
2.7599	4.3307	.7874	.7874	9114-KDD3

Special bearings - *cont.*

Preferred ag seals

SKF no.	Shaft size	Bore	Width	Type & style	Lip code	SKF no.	Shaft size	Bore	Width	Type & style	Lip code
4938	.500	.875	.250	HM14	R	12428	1.250	1.983	.250	CRWA1	R
7410	.750	.999	.125	HM14	R	12437	1.250	1.983	.250	HM21	R
9725	.984	1.575	.276	CRW1	R	12830	1.281	2.000	.375	HMSA7	R
9731	.984	1.772	.276	CRW1	R	13568	1.375	2.000	.313	CRW1	R
10035	1.000	1.781	.469	HM18	R	13569	1.375	2.000	.313	CRWA1	R
10515	1.063	1.499	.250	CRW1	R	13602	1.375	2.106	.313	CRWA1	R
10740	1.063	2.000	.250	CRW1	R	13649	1.375	2.125	.313	CRW1	R
11055	1.125	1.438	.203	HM14	R	13650	1.375	2.125	.313	CRWA1	R
11061	1.125	1.499	.188	CRW1	R	13671	1.375	2.250	.313	CRW1	R
11066	1.125	1.561	.250	CRW1	P	13711	1.375	2.328	.406	HM18	R
11067	1.125	1.561	.250	CRW1	R	13938	1.378	1.850	.276	CRW1	R
11164	1.125	1.781	.469	HM18	R	14869	1.500	2.000	.188	HM8	R
12124	1.219	1.979	.406	HM14	R	14972	1.500	2.328	.500	HM14	R
12330	1.250	1.500	.125	HM14	R	14974	1.500	2.328	.500	HM18	R
12363	1.250	1.752	.250	CRW1	R	14975	1.500	2.328	.390	HM18	R
12407	1.250	1.979	.250	HM21	R	15004	1.500	2.374	.313	CRW1	R
12411	1.250	1.979	.406	HM18	R	15039	1.500	2.374	.500	CRWH1	R

Lip codes: D-Duralip P-Polyacrylate R-Nitrile S-Silicone V-Longlife

Note: Seal information based on comparisons with other ag manufacturers.

(Cont.)

Preferred ag seals

SKF no.	Shaft size	Bore	Width	Type & style	Lip code	SKF no.	Shaft size	Bore	Width	Type & style	Lip code
15174	1.500	2.462	.290	X13	R	17617	1.750	2.718	.359	HM18	R
15190	1.500	2.623	.250	HM21	R	17618	1.750	2.718	.359	TL7	R
15209	1.500	2.716	.250	HM21	R	17847	1.781	2.750	.500	CRSH1	R
15660	1.563	2.531	.285	X15	R	18104	1.813	2.623	.313	CRW1	R
15707	1.563	2.686	.313	CRW1	R	18127	1.813	2.719	.270	TL7	R
16069	1.625	2.328	.438	HM18	R	18510	1.872	2.684	.544	X13	R
16117	1.625	2.437	.313	CRW1	R	18734	1.875	2.875	.313	CRWA1	R
16204	1.625	2.443	.640	C8	R	18823	1.875	3.000	.250	HM21	R
16284	1.625	2.562	.250	HM21	R	19400	1.938	3.125	.500	CRW1	R
16515	1.654	2.362	.315	CRW1	R	19745	2.000	2.502	.313	CRW1	P
16818	1.688	2.650	.290	X4	R	19844	2.000	2.802	.250	X15	D
16820	1.688	2.688	.250	X9	R	20044	2.000	3.061	.250	HM21	R
17406	1.750	2.562	.500	HM18	R	20148	2.000	3.623	.250	HM21	R
17413	1.750	2.565	.313	CRWA1	R	20560	2.063	2.938	.090	X15	R
17415	1.750	2.561	.250	HM21	R	20674	2.063	3.150	.266	TL7	R
17443	1.750	2.623	.313	CRWA1	R	20735	2.063	3.250	.294	X15	R
17484	1.750	2.686	.313	CRW1	R	20952	2.094	2.718	.359	HM18	R

Lip codes: D-Duralip P-Polyacrylate R-Nitrile S-Silicone V-Longlife

Note: Seal information based on comparisons with other ag manufacturers.

(Cont.)

Preferred ag seals

SKF no.	Shaft size	Bore	Width	Type & style	Lip code	SKF no.	Shaft size	Bore	Width	Type & style	Lip code
21098	2.125	2.875	.438	CRW1	R	26310	2.625	3.813	.415	TL5	R
21269	2.125	3.189	.375	CRWA1	V	27470	2.750	3.876	.438	CRWH1	R
22030	2.205	2.953	.315	CRW1	R	27725	2.756	3.465	.315	CRW1	R
22392	2.250	3.061	.250	HM21	R	32441	3.250	4.500	.313	X15	R
22430	2.250	3.250	.270	X15	R	35422	3.543	4.528	.512	HMSA7	P
22483	2.250	3.310	.375	HM18	R	45230	4.528	5.709	.472	CRW1	R
22532	2.250	3.371	.438	CRWHA1	R	53151	5.313	6.500	.500	CRSHA1	R
22832	2.283	3.150	.315	CRW1	R						
22870	2.297	3.148	.359	HM18	R						
23063	2.313	3.125	.375	CRWA1	V						
23445	2.362	3.228	.315	CRWA1	R						
23450	2.362	3.374	.395	HMS14	S						
23654	2.375	3.125	.438	CRWHA1	R						
23744	2.375	3.471	.250	X15	R						
23756	2.375	3.481	.438	CRWHA1	R						
24986	2.500	3.500	.438	CRWH1	R						
25078	2.496	3.672	.313	X15	R						

Lip codes: D-Duralip P-Polyacrylate R-Nitrile S-Silicone V-Longlife

Note: Seal information based on comparisons with other ag manufacturers.

Competitor to SKF interchange guide

Fafnir	SKF	Fafnir	SKF	Fafnir	SKF
100MS.....	100-MS	1103GRRB3.....	1103-KRRB3	1104KRRCOL.....	1104-KRR
1012KLL.....	1012-KRR	1103KLL3.....	1103-KRR3	1106KRR.....	1106-KRR
1012KRR.....	1012-KRR	1103KLLB.....	1103-KRRB	1106KRRB.....	1106-KRRB
1012KRRB.....	1012-KRRB	1103KLLB3.....	1103-KRRB3	1106KRRBCOL.....	1106-KRRB
1012KRRB3.....	1012-KRRB3	1103KRR.....	1103-KRR	1106KRRCOL.....	1106-KRR
1012KRRBC1.....	1012-KRRB	1103KRR2.....	1103-KRR3	1107KLL.....	1107-KRR
1012KRRBCOL.....	1012-KRRB	1103KRR3.....	1103-KRR3	1107KRR.....	1107-KRR
1012KRRCOL.....	1012-KRR	1103KRR3COL.....	1103-KRR3	1107KRRB.....	1107-KRRB
1014KLL.....	1014-KRR	1103KRRB.....	1103-KRRB	1107KRRBCOL.....	1107-KRRB
1014KPPB3.....	1014-KPPB3	1103KRRB3.....	1103-KRRB3	1107KRRCOL.....	1107-KRR
1014KRR.....	1014-KRR	1103KRRB3FS615.....	1103-KRRB3	1108KRR.....	1108-KRR
1014KRRB.....	1014-KRRB	1103KRRBCOL.....	1103-KRRB	1108KRRB.....	1108-KRRB
1014KRRBCOL.....	1014-KRRB	1103KRRCOL.....	1103-KRR	1108KRRBCOL.....	1108-KRRB
1015KRRB.....	1015-KRRB	1104KLLB.....	1104-KRRB	1108KRRCOL.....	1108-KRR
1015KRRBCOL.....	1015-KRRB	1104KRR.....	1104-KRR	1110KRRB.....	1110-KRRB
1100KLLB.....	1100-KRRB	1104KRRB.....	1104-KRRB	1110KRRBCOL.....	1110-KRRB
1100KRRB.....	1100-KRRB	1104KRRBC1.....	1104-KRRB	1111KRR.....	1111-KRR
1100KRRBFS615.....	1100-KRRB	1104KRRBCOL.....	1104-KRRB	1111KRRCOL.....	1111-KRR
1102KRRB.....	1102-KRRB	1104KRRBCOLA1452.....	1104-KRRB	1112KRR.....	1112-KRR

Competitor to SKF interchange guide

Fafnir	SKF	Fafnir	SKF	Fafnir	SKF
1112KRRB.....	1112-KRRB	203KLL5.....	203-KRR5	204RR6.....	P204-RR6
1112KRRBCOL.....	1112-KRRB	203KRR2.....	203-KRR2	204RR6.....	204-RR7
1112KRRCOL.....	1112-KRR	203KRR2A3324.....	203-KRR2	204RR6E8728.....	204-RR7
1114KRR.....	1114-KRR	203KRR3.....	P203-KRR3	204RR7E8728.....	204-RR7
1114KRRCOL.....	1114-KRR	203KRR5.....	203-KRR5	204RR8.....	204-RR8
1115KRR.....	1115-KRR	203KRR6.....	203-KRR6	204RY2.....	204-RY2
1115KRRB.....	1115-KRRB	203NPP10.....	P203-PP10	205KP3.....	205-KR3
1115KRRBCOL.....	1115-KRRB	203NPPB.....	203-NPPB	205KP6.....	205-KP6
1115KRRCOL.....	1115-KRR	203PP7.....	203-KRR5	205KR3.....	205-KR3
1200KLLB.....	1200-KRRB	203RR2E8728.....	203-KRR2	205KR3FS615.....	205-KR3
1200KRRB.....	1200-KRRB	204KR3.....	P204-RR6	205KRP2.....	205-KRP2
1200KRRBCOL.....	1200-KRRB	204KRD4.....	204-KRD4	205KRR2.....	205-KRR2
202KDD5.....	202-NPP5	204KRNP2.....	P204-RR6	205KRRB2.....	205-KRRB2
202KDD6.....	202-NPP8	204KRR2.....	204-KRR2	205NPPB.....	205-NPPB
202KRR3.....	202-KRR3	204KRR2A3409.....	204-KRR2	205P5.....	205-KR3
202NPP5.....	202-NPP5	204KRRD4.....	204-KRD4	205PP10.....	205-PP10
202NPP8.....	202-NPP8	204NPPB.....	204-NPPB	205PP10FS544.....	205-PP10
202NPP9.....	202-NPP9	204PPB.....	204-NPPB	205PP11.....	205-PP11
202NPPB.....	202-NPPB	204PY2.....	204-RY2	205PP9FS576.....	205-PP9

Competitor to SKF interchange guide

Fafnir	SKF	Fafnir	SKF	Fafnir	SKF
205PPB.....	205-NPPB	207KYYFS615.....	A88107-BVV	47MST.....	47-MST
205PPB7.....	205-PPB7	207NPP8.....	207-NPPB	47MSTR.....	47-MSTR
205RR2.....	205-KRR2	207PPB.....	207-NPPB	47MSTRZP.....	47-MSTR
206KPP3.....	206-KPP3	208K3E.....	W208-K3	47MSTZP.....	47-MST
206KPPB5.....	206-KPPB5	208KP2.....	208-KP2	5203KYY2.....	5203-KYY2
206KPR4.....	206-KPR4	208KP3.....	W208-PP5	52MS.....	52-MS
206KRR13.....	206-KRR13	208NPP8.....	208-NPPB	52MST.....	52-MST
206KRR6.....	206-KRR6	208NPPB.....	208-NPPB	52MSTR.....	52-MSTR
206KRR6FS282.....	206-KRR6	208PPB.....	208-NPPB	52MSTZP.....	52-MST
206KRR8.....	206-KRR8	209KRB2.....	209-KRRB2	52MSZP.....	52-MS
206KRR86FS615.....	206-KRRB6	209KRRB2.....	209-KRRB2	620210VV.....	202-NPP5
206KRRB6.....	206-KRRB6	209PPB.....	S6209-2RSJ	62MS.....	62-MS
206NPPB.....	206-NPPB	305NPPB.....	305-NPPB	62MSC1.....	62-MS
206PPB.....	206-NPPB	305PPB.....	305-NPPB	62MST.....	62-MST
207KPPB3.....	207-KPPB3	40MS.....	40-MS	62MSTR.....	62-MSTR
207KRR14.....	207-KRR14	40MSC1.....	40-MS	62MSTRZP.....	62-MSTR
207KRRB12.....	207-KRRB12	40MST.....	40-MST	72MS.....	72-MS
207KRRB17.....	207-KRRB17	47MS.....	47-MS	72MSC1.....	72-MS
207KYY.....	A88107-BVV	47MSC1.....	47-MS	72MST.....	72-MST

Competitor to SKF interchange guide

Fafnir	SKF	Fafnir	SKF	Fafnir	SKF
72MSZP.....	72-MS	BP14SYHX.....	RAK 7/8	ER27.....	ER27
80MS.....	80-MS	BP15FYX.....	RCJ 15/16	G100MS.....	G100-MSA
80MSZP.....	80-MS	BP15SYHX.....	RAK 15/16	G100MSA.....	G100-MSA
85MS.....	85-MS	BP1875PWG.....	RAK 1-7/8	G100MSB.....	G100-MSB
85MSA.....	G85-MSA	BP200FYX.....	RCJ 2	G1010KRR.....	G1010-KRR
85MSZP.....	85-MS	BP200SYHX.....	RAK 2	G1010KRRB.....	G1010-KRRB
87MS.....	87-MS	BP40F.....	40-MS	G1010KRRBCOL.....	G1010-KRRB
87MSZP.....	87-MS	BP47F.....	47-MS	G1010KRRCOL.....	G1010-KRR
90MS.....	90-MS	BP47FT.....	47-MST	G1012KLLB.....	G1012-KRRB
90MSZP.....	90-MS	BP491A.....	DHU491-A	G1012KRRB.....	G1012-KRRB
9104KDD.....	9104-KDD	DHU112R209.....	DHU 1-1/2R	G1013KLLB.....	G1013-KRRB
9114KDD3.....	9114-KDD3	DHU114S209.....	DHU 1-1/4	G1013KRRB.....	G1013-KRRB
9114KDD3FS264C.....	9114-KDD3	DHU118S209.....	DHU 1-1/8	G1013KRRBCOL.....	G1013-KRRB
BCJC34.....	RCJ 3/4	DHU134R211.....	DHU 1-3/4E	G1014KLLB.....	G1014-KRRB
BCJT34.....	VCJT 3/4	DHU2316R211.....	DHU 2-3/16	G1014KRRB.....	G1014-KRRB
BP12FYTP2.....	VCJT 3/4	DHU491A.....	DHU491-A	G1015KLLB.....	G1015-KRRB
BP12FYX.....	RCJ 3/4	ER16.....	ER16	G1015KRRB.....	G1015-KRRB
BP12SYHX.....	RAK 3/4	ER19.....	ER19	G1015KRRBCOL.....	G1015-KRRB
BP13SYHX.....	RAK 13/16	ER22.....	ER22	G1100KPPB3.....	G1100-PPB3

Competitor to SKF interchange guide

Fafnir	SKF	Fafnir	SKF	Fafnir	SKF
G1100KPPB3COL.....	G1100-PPB3	G1104KRRB.....	G1104-KRRB	G1109KLLB.....	G1109-KRRB
G1100KRR.....	G1100-KRR	G1104KRRCOL.....	G1104-KRR	G1109KRRB.....	G1109-KRRB
G1100KRRB.....	G1100-KRRB	G1105KLLB.....	G1105-KRRB	G1109KRRBCOL.....	G1109-KRRB
G1100KRRCOL.....	G1100-KRR	G1105KRRB.....	G1105-KRRB	G1110KLLB.....	G1110-KRRB
G1101KLLB.....	G1101-KRRB	G1105KRRBCOL.....	G1105-KRRB	G1110KRRB.....	G1110-KRRB
G1101KRRB.....	G1101-KRRB	G1106KLLB.....	G1106-KRRB	G1110KRRBCOL.....	G1110-KRRB
G1101KRRBCOL.....	G1101-KRRB	G1106KPPB2.....	G1106-PPB2	G1111KLLB.....	G1111-KRRB
G1102KLLB.....	G1102-KRRB	G1106KPPB2COL.....	G1106-PPB2	G1111KRRB.....	G1111-KRRB
G1102KRRB.....	G1102-KRRB	G1106KRRB.....	G1106-KRRB	G1111KRRBCOL.....	G1111-KRRB
G1103KLLB.....	G1103-KRRB	G1107KLLB.....	G1107-KRRB	G1112KLLB.....	G1112-KRRB
G1103KLLB3.....	G1103KRRB3	G1107KPPB2.....	G1107-PPB2	G1112KPPB4.....	G1112-PPB4
G1103KPPB4.....	G1103-PPB4	G1107KPPB2COL.....	G1107-PPB2	G1112KPPB4COL.....	G1112-PPB4
G1103KPPB4COL.....	G1103-PPB4	G1107KRRB.....	G1107-KRRB	G1112KRR.....	G1112-KRR
G1103KRRB.....	G1103-KRRB	G1108KLLB.....	G1108-KRRB	G1112KRRB.....	G1112-KRRB
G1103KRRB3.....	G1103KRRB3	G1108KPPB3.....	G1108-PPB3	G1112KRRCOL.....	G1112-KRR
G1104KLLB.....	G1104-KRRB	G1108KPPB3COL.....	G1108-PPB3	G1114KLLB.....	G1114-KRRB
G1104KPPB2.....	G1104-PPB2	G1108KRR.....	G1108-KRR	G1114KRRB.....	G1114-KRRB
G1104KPPB2COL.....	G1104-PPB2	G1108KRRB.....	G1108-KRRB	G1114KRRBCOL.....	G1114-KRRB
G1104KRR.....	G1104-KRR	G1108KRRCOL.....	G1108-KRR	G1115KLLB.....	G1115-KRRB

Competitor to SKF interchange guide

Fafnir	SKF	Fafnir	SKF	Fafnir	SKF
G1115KPPB3	G1115-PPB3	G62MSBZP	G62-MSB	GRA012NPPB	GRA012-RRB
G1115KPPB3COL	G1115-PPB3	G72MSA	G72-MSA	GRA012RRB	GRA012-RRB
G1115KRRB	G1115-KRRB	G72MSAZP	G72-MSA	GRA014NPPB	GRA014-RRB
G1200KLLB	G1200-KRRB	G72MSB	G72-MSB	GRA014RRB	GRA014-RRB
G1200KPPB4	G1200-PPB4	G72MSBZP	G72-MSB	GRA014RRBCOL	GRA014-RRB
G1200KPPB4COL	G1200-PPB4	G80MSA	G80-MSA	GRA015RRB	GRA015-RRB
G1200KRRB	G1200-KRRB	G80MSB	G80-MSB	GRA100NPPB	GRA100-RRB
G1203KLLB	G1203-KRRB	G85MSA	G85-MSA	GRA100RRB	GRA100-RRB
G1203KPPB4	G1203-PPB4	G85MSAZP	G85-MSA	GRA102NPPB	GRA102-RRB
G1203KPPB4COL	G1203-PPB4	G85MSB	G85-MSB	GRA102RRB	GRA102-RRB
G1203KRRB	G1203-KRRB	G85MSBZP	G85-MSB	GRA102RRBCOL	GRA102-RRB
G1203KRRBCOL	G1203-KRRB	G90MSA	G90-MSA	GRA102RRC	GRA102-RRB
G1300KLLB	G1200-KRRB	G90MSAZP	G90-MSA	GRA103NPPB2	GRA103RRB2
G207KPPB2	G207-KPPB2	G90MSB	G90-MSB	GRA103RRB	GRA103-RRB
G52MSA	G52-MSA	G90MSBZP	G90-MSB	GRA103RRB2	GRA103RRB2
G52MSB	G52-MSB	GN203KRRB	GN203-KRRB	GRA103RRB2COL	GRA103RRB2
G62MSA	G62-MSA	GRA008RRB	GRA008-RRB	GRA103RRBCOL	GRA103-RRB
G62MSAZP	G62-MSA	GRA010NPPB	GRA010-RRB	GRA104NPPB	GRA104-RRB
G62MSB	G62-MSB	GRA010RRB	GRA010-RRB	GRA104RRB	GRA104-RRB

Competitor to SKF interchange guide

Fafnir	SKF	Fafnir	SKF	Fafnir	SKF
GRA106NPPB	GRA106-RRB	GRA203RRB	GRA203-RRB	GW210PPB4	GW210-PPB4
GRA106RRB	GRA106-RRB	GRA203RRBCOL	GRA203-RRB	GW210PPB5	GW210-PPB5
GRA106RRBCOL	GRA106-RRB	GW208PP17	GW208-PP17	GW211PP17	GW211-PP17
GRA107NPPB	GRA107-RRB	GW208PPB5	GW208-PPB5	GW211PP2	GW211-PP2
GRA107RRB	GRA107-RRB	GW208PPB5FS544	GW208-PPB5	GW211PP25	GW211-PP25
GRA107RRBCOL	GRA107-RRB	GW208PPB6	GW208-PPB6	GW211PP3	GW211-PP3
GRA108NPPB	GRA108-RRB	GW208PPB8	GW208-PPB8	GW211PP3C5	GW211-PP3
GRA108RRB	GRA108-RRB	GW209PB11	GW209PPB11	GW211PPB13	GW211PPB13
GRA1100KRRB	G1100-KRRB	GW209PP8	GW209-PP8	GW211PPB14	GW211PPB14
GRA111RRB	GRA111-RRB	GW209PPB11	GW209PPB11	GW211PPB2	GW211-PPB2
GRA111RRBCOL	GRA111-RRB	GW209PPB11FS544	GW209PPB11	GW211PPB3	GW211-PPB3
GRA112RRB	GRA112-RRB	GW209PPB2	GW209-PPB2	GW211PPB8	GW211-PPB8
GRA112RRBCOL	GRA112-RRB	GW209PPB4	GW209-PPB4	GW211PPB9	GW211-PPB9
GRA115RRB	GRA115-RRB	GW209PPB5	GW209-PPB5	GW211PPB9FS544	GW211-PPB9
GRA115RRB2	GRA115RRB2	GW209PPB8	GW209-PPB8	GW214PP2	GW214-PP2
GRA115RRB2COL	GRA115RRB2	GW210PP3	GW210-PP3	GW214PPB2	GW214-PPB2
GRA115RRBCOL	GRA115-RRB	GW210PP4	GW210-PP4	GW214PPB4	GW214-PPB4
GRA200RRB	GRA200-RRB	GW210PP9	GW210-PP9	GW214PPB5	GW214-PPB5
GRA200RRBCOL	GRA200-RRB	GW210PPB2	GW210-PPB2	GW216PP2	GW216-PP2

Competitor to SKF interchange guide

Fafnir	SKF	Fafnir	SKF	Fafnir	SKF
GWZ208PP17	GW208-PP17	LAK1716	RAK 1-7/16	LCJ158	RCJ 1-5/8
GY1100KRRB	GY1100KRRB	LAK178	RAK 1-7/8	LCJ1716	RCJ 1-7/16
GY1104KRRB	GY1104KRRB	LAK2	RAK 2	LCJ1916	RCJ 1-9/16
GY1108KRRB	GY1108KRRB	LAK2316	RAK 2-3/16	LCJ2	RCJ 2
GYA014RRB	GYA014-RRB	LAK34	RAK 3/4	LCJ2316	RCJ 2-3/16
GYA112RRB	GYA112-RRB	LAK78	RAK 7/8	LCJ34	RCJ 3/4
GYA20RRB	GYAE20-RRB	LAS1	RAS 1	LCJT1	VCJT 1
H204KYNP2	6204-FREN	LAS112	RAS 1-1/2	LCJT112	VCJT 1-1/2
J202KRR8	J202-KRR8	LAS114	RAS 1-1/4	LCJT114	VCJT 1-1/4
LAK1	RAK 1	LAS1316	RAS1-3/16M	LCJT118	VCJT 1-1/8
LAK11116	RAK1-11/16	LCJ11116	RCJ1-11/16	LCJT1316	VCJT1-3/16
LAK112	RAK 1-1/2	LCJ112	RCJ 1-1/2	LCJT138	VCJT 1-3/8
LAK114	RAK 1-1/4	LCJ114	RCJ 1-1/4	LCJT1716	VCJT1-7/16
LAK11516	RAK1-15/16	LCJ11516	RCJ1-15/16	LCJT34	VCJT 3/4
LAK118	RAK 1-1/8	LCJ118	RCJ 1-1/8	LCJT58	VCJT 5/8
LAK1316	RAK1-3/16M	LCJ1316	RCJ1-3/16M	LCJT78	VCJT 7/8
LAK134	RAK 1-3/4	LCJ134	RCJ 1-3/4	LL1	G1100-KRRB
LAK138	RAK 1-3/8	LCJ138	RCJ 1-3/8	LL112	G1108-KRRB
LAK158	RAK 1-5/8	LCJ1516	RCJ 15/16	LL114	G1104-KRRB

Competitor to SKF interchange guide

Fafnir	SKF	Fafnir	SKF	Fafnir	SKF
LL1716.....	G1107-KRRB	RA010RRB.....	RA010-RRB	RA100NPP.....	RA100-RR
LLT1.....	G1100-KRRB	RA010RRCOL.....	RA010-RR	RA100NPPB.....	RA100-RRB
LLT114.....	G1104-KRRB	RA012.....	204-RY2	RA100RR.....	RA100-RR
LLT1716.....	G1107-KRRB	RA012NPP.....	RA012-RR	RA100RRB.....	RA100-RRB
LLTR1.....	G1100-KRRB	RA012NPPB.....	RA012-RRB	RA100RRBFS615.....	RA100-RRB
LLTR114.....	G1103KRRB3	RA012RR.....	RA012-RR	RA101NPPB.....	RA101-RRB
P203KRR2.....	203-KRR2	RA012RRB.....	RA012-RRB	RA101RRB.....	RA101-RRB
P203KRR3.....	P203-KRR3	RA012RRC2.....	RA012-RR	RA101RRBCOL.....	RA101-RRB
P203PP10.....	P203-PP10	RA014NPPB.....	RA014-RRB	RA102NPP.....	RA102-RR
P204KRNP2.....	P204-RR6	RA014RR.....	RA014-RR	RA102NPPB.....	RA102-RRB
P204RR6.....	P204-RR6	RA014RRB.....	RA014-RRB	RA102RR.....	RA102-RR
P205NPP4.....	205-KRP2	RA014RRCOL.....	RA014-RR	RA102RRA3045.....	RA102-RR
RA008NPPB.....	RA008-RRB	RA015NPP.....	RA015-RR	RA102RRA3324.....	RA102-RR
RA008RR.....	RA008-RR	RA015NPPB.....	RA015-RRB	RA102RRB.....	RA102-RRB
RA008RRB.....	RA008-RRB	RA015RR.....	RA015-RR	RA102RRCOL.....	RA102-RR
RA008RRBCOL.....	RA008-RRB	RA015RRB.....	RA015-RRB	RA102RRE8728.....	RA102-RR
RA008RRCOL.....	RA008-RR	RA015RRBCOL.....	RA015-RRB	RA102RRE9695.....	RA102-RR
RA010NPPB.....	RA010-RRB	RA015RRCOL.....	RA015-RR	RA103NPP.....	RA103-RR
RA010RR.....	RA010-RR	RA1.....	RA100-RRB	RA103NPP2.....	RA103-RR2

Competitor to SKF interchange guide

Fafnir	SKF	Fafnir	SKF	Fafnir	SKF
RA103NPPB.....	RA103-RRB	RA106RR.....	RA106-RR	RA112RRCOL.....	RA112-RR
RA103NPPB2.....	RA103-RRB2	RA106RRB.....	RA106-RRB	RA114.....	RA104-RRB
RA103RR.....	RA103-RR	RA106RRCOL.....	RA106-RR	RA115RR.....	RA115-RR
RA103RR2.....	RA103-RR2	RA107NPP.....	RA107-RR	RA115RRB.....	RA115-RRB
RA103RR2COL.....	RA103-RR2	RA107NPPB.....	RA107-RRB	RA115RRB2.....	RA115-RRB2
RA103RR2E9695.....	RA103-RR2	RA107RR.....	RA107-RR	RA115RRB2COL.....	RA115-RRB2
RA103RRB.....	RA103-RRB	RA107RRB.....	RA107-RRB	RA115RRBCOL.....	RA115-RRB
RA103RRB2.....	RA103-RRB2	RA107RRCOL.....	RA107-RR	RA115RRCOL.....	RA115-RR
RA103RRB2FS615.....	RA103-RRB2	RA108RR.....	RA108-RR	RA118.....	RA102-RRB
RA103RRCOL.....	RA103-RR	RA108RRB.....	RA108-RRB	RA1316.....	RA103-RRB
RA104NPPB.....	RA104-RRB	RA108RRCOL.....	RA108-RR	RA138.....	RA106-RRB
RA104RR.....	RA104-RR	RA110RRB.....	RA110-RRB	RA1716.....	RA107-RRB
RA104RRB.....	RA104-RRB	RA110RRBCOL.....	RA110-RRB	RA200RRB.....	RA200-RRB
RA104RRCOL.....	RA104-RR	RA111RRB.....	RA111-RRB	RA200RRBCOL.....	RA200-RRB
RA105NPPB.....	RA105-RRB	RA111RRBCOL.....	RA111-RRB	RA34.....	RA012-RRB
RA105RRB.....	RA105-RRB	RA112.....	GRA108-RRB	RA58.....	RA010-RRB
RA105RRBCOL.....	RA105-RRB	RA112RR.....	RA112-RR	RA78.....	RA014-RRB
RA106NPP.....	RA106-RR	RA112RRB.....	RA112-RRB	RAK1.....	RAK 1
RA106NPPB.....	RA106-RRB	RA112RRBCOL.....	RA112-RRB	RAK11116.....	RAK1-11/16

Competitor to SKF interchange guide

Fafnir	SKF	Fafnir	SKF	Fafnir	SKF
RAK1116.....	RAK 11/16	RAL010NPPBCOL.....	RAL010-PPB	RATR1.....	RA100-RRB
RAK112.....	RAK 1-1/2	RAL012NPPB.....	RAL012-PPB	RATR114.....	RA104-RRB
RAK114.....	RAK 1-1/4	RAL012NPPBCOL.....	RAL012-PPB	RATR118.....	RA102-RRB
RAK11516.....	RAK1-15/16	RAL100NPPB.....	RAL100-PPB	RATR1316.....	RA103-RRB
RAK118.....	RAK 1-1/8	RAL100NPPBCOL.....	RAL100-PPB	RATR78.....	RA014-RRB
RAK12.....	RAK 1/2	RAS1.....	RAS 1	RCJ1.....	RCJ 1
RAK1316.....	RAK1-3/16M	RAS112.....	RAS 1-1/2	RCJ11116.....	RCJ1-11/16
RAK134.....	RAK 1-3/4	RAS114.....	RAS 1-1/4	RCJ112.....	RCJ 1-1/2
RAK138.....	RAK 1-3/8	RAS1316.....	RAS 13/16	RCJ114.....	RCJ 1-1/4
RAK1516.....	RAK 15/16	RAS158.....	RAS 1-5/8	RCJ11516.....	RCJ1-15/16
RAK158.....	RAK 1-5/8	RAS2.....	RAS 2	RCJ118.....	RCJ 1-1/8
RAK1716.....	RAK 1-7/16	RAT1.....	RA100-RRB	RCJ1316.....	RCJ1-3/16M
RAK178.....	RAK 1-7/8	RAT114.....	RA104-RRB	RCJ134.....	RCJ 1-3/4
RAK2.....	RAK 2	RAT118.....	RA102-RRB	RCJ138.....	RCJ 1-3/8
RAK2316.....	RAK 2-3/16	RAT1316.....	RA103-RRB	RCJ1516.....	RCJ 15/16
RAK34.....	RAK 3/4	RAT138.....	RA106-RRB	RCJ158.....	RCJ 1-5/8
RAK58.....	RAK 5/8	RAT1716.....	RA107-RRB	RCJ1716.....	RCJ 1-7/16
RAK78.....	RAK 7/8	RAT34.....	RA012-RRB	RCJ1916.....	RCJ 1-9/16
RAL010NPPB.....	RAL010-PPB	RAT78.....	RA014-RRB	RCJ2.....	RCJ 2

Competitor to SKF interchange guide

Fafnir	SKF	Fafnir	SKF	Fafnir	SKF
RCJ2316	RCJ 2-3/16	RCJCT1316.....	VCJT1-3/16	RCJTC114	VCJT 1-1/4
RCJ34	RCJ 3/4	RCJT1	RCJT 1	RCJTC118	VCJT 1-1/8
RCJC 2	FY2TF	RCJT1	VCJT 1	RCJTC138	VCJT 1-3/8
RCJC1	RCJ 1	RCJT112	RCJT 1-1/2	RCJTC1716.....	VCJT1-7/16
RCJC11116.....	RCJ1-11/16	RCJT112	VCJT 1-1/2	RCJTC34.....	VCJT 3/4
RCJC112	RCJ 1-1/2	RCJT114	RCJT 1-1/4	RCJTC58.....	VCJT 5/8
RCJC114	RCJ 1-1/4	RCJT114	VCJT 1-1/4	RCJTC78.....	VCJT 7/8
RCJC11516.....	RCJ1-15/16	RCJT118	VCJT 1-1/8	RR1	G1100-KRRB
RCJC118	RCJ 1-1/8	RCJT1316.....	VCJT1-3/16	RR112	G1108-KRRB
RCJC1316	RCJ1-3/16M	RCJT134	RCJT 1-3/4	RR114	G1104-KRRB
RCJC134	RCJ 1-3/4	RCJT138	VCJT 1-3/8	RR1716.....	G1107-KRRB
RCJC138	RCJ 1-3/8	RCJT1716.....	RCJT1-7/16	RRT1	G1100-KRRB
RCJC158	RCJ 1-5/8	RCJT1716.....	VCJT1-7/16	RRT114	G1104-KRRB
RCJC1716	RCJ 1-7/16	RCJT34	RCJT 3/4	RRT1716.....	G1107-KRRB
RCJC1916	RCJ 1-9/16	RCJT34	VCJT 3/4	RRTR1	G1100-KRRB
RCJC2	FY2-RM	RCJT58.....	VCJT 5/8	RRTR114.....	G1104-KRRB
RCJC2	RCJ 2	RCJT78.....	VCJT 7/8	SAS 114	SY1-1/4FM
RCJC2316	RCJ 2-3/16	RCJTC1	VCJT 1	SCJT 134.....	FYT1-3/4TF
RCJC34	RCJ 3/4	RCJTC112	VCJT 1-1/2	SCJT1145.....	SCJT1-1/4S

Competitor to SKF interchange guide

Fafnir	SKF	Fafnir	SKF	Fafnir	SKF
TAK1.....	TAK 1	VCJ112.....	VCJ 1-1/2	W208K3.....	W208-K3
TAK112.....	TAK 1-1/2	VCJ114.....	VCJ 1-1/4	W208K3E.....	W208-K3
TCJ118.....	RCJ 1-1/8	VCJ114S.....	VCJ 1-1/4S	W208K3E7440.....	W208-K3
TCJT1.....	TCJT 1	VCJ138.....	VCJ 1-3/8	W208K3E9003.....	W208-K3
VAK114.....	VAK 1-1/4	VCJ1716.....	VCJ 1-7/16	W208PP10.....	W208-PP10
VAK114S.....	VAK 1-1/4S	VCJT1.....	VCJT 1	W208PP5.....	W208-PP5
VAK118.....	VAK 1-1/8	VCJT112.....	VCJT 1-1/2	W208PP6.....	W208-PP6
VAK1316.....	VAK1-3/16M	VCJT114.....	VCJT 1-1/4	W208PP8.....	W208-PP8
VAK138.....	VAK 1-3/8	VCJT114S.....	VCJT1-1/4S	W208PP8A2889.....	W208-PP8
VAK1516.....	VAK 15/16	VCJT118.....	VCJT 1-1/8	W208PPB11.....	W208-PPB11
VAK1716.....	RAK 1-7/16	VCJT1316.....	VCJT1-3/16	W208PPB12.....	W208-PPB12
VAK1716.....	VAK 1-7/16	VCJT134.....	VCJT 1-3/4	W208PPB13.....	W208-PPB13
VAK34.....	VAK 3/4	VCJT138.....	VCJT 1-3/8	W208PPB16.....	W208-PPB16
VAK58.....	VAK 5/8	VCJT1716.....	VCJT1-7/16	W208PPB16FS544.....	W208-PPB16
VAK78.....	VAK 7/8	VCJT34.....	VCJT 3/4	W208PPB2.....	W208-PPB23
VAS1.....	VAS 1	VCJT58.....	VCJT 5/8	W208PPB23.....	W208-PPB23
VCJ 134.....	VCJ 1-3/4	VCJT78.....	VCJT 7/8	W208PPB4.....	W208-PPB7
VCJ 1516.....	VCJ 15/16	W208K2.....	W208-K2	W208PPB5.....	W208-PPB5
VCJ1.....	VCJ 1	W208K2E9003.....	W208-K2	W208PPB6.....	W208-PPB6

Competitor to SKF
interchange guide - cont.

Competitor to SKF interchange guide

Fafnir	SKF	Fafnir	SKF	Fafnir	SKF
W208PPB7.....	W208-PPB7	W211PPB3.....	W211-PPB3		
W208PPB8.....	W208-PPB5	W211PPB4.....	W211-PPB4		
W208PPB9.....	W208-PPB6	W211PPB6.....	W211-PPB6		
W209PPB10.....	W209PPB10	YAS 1.....	SY1FM		
W209PPB2.....	W209-PPB2	YAS 114.....	SY1-1/4TF		
W209PPB4.....	W209-PPB4	YCJT 1.....	FYT1TF		
W209PPB5.....	W209-PPB5	YCJT138.....	FYT1-3/8TF		
W209PPB6.....	W209PPB10				
W209PPB6FS615.....	W209PPB10				
W210PP2.....	W210-PP2				
W210PP4.....	W210-PP4				
W210PPB2.....	W210-PPB2				
W210PPB4.....	W210-PPB4				
W210PPB5.....	W210-PPB5				
W210PPB6.....	W210-PPB6				
W211PP2.....	W211-PP2				
W211PP3.....	W211-PP3				
W211PP5.....	W211-PP5				
W211PPB2.....	W211-PPB2				

Competitor to SKF
interchange guide - cont.

Competitor to SKF interchange guide

Federal Mogul	SKF	Federal Mogul	SKF	Federal Mogul	SKF
100MS.....	100-MS	204BBE.....	204-RR8	40MST.....	40-MST
202CC1.....	202-NPP5	204BBUN.....	204-RR8	40MSTR.....	40-MS
202CC16.....	202-NPP8	204FGB.....	204-KRD4	47MPB.....	47-MPB
202FFB.....	6202-FFB	204FREN.....	6204-FREN	47MS.....	47-MS
202FFH8.....	202-NPP9	204FVMN.....	204-RY2	47MST.....	47-MST
202FFL.....	6202-FFLB	204GGB.....	1012-KRRB3	47MSTR.....	47-MSTR
202FFLB.....	6202-FFLB	204TTM.....	6204-TTM	52MPB.....	52-MPB
202KRR8.....	J202-KRR8	205PPB7.....	205-PPB7	52MS.....	52-MS
202RRE.....	J202-KRR8	205RHN.....	205-KR3	52MST.....	52-MST
203FFA.....	6203-FFA	205RRAN.....	205-KRP2	52MSTR.....	52-MSTR
203KKRR2.....	203-KRR2	205RVA.....	205-KRP2	62MPB.....	62-MPB
203RR12.....	6203-RR12	205RVA.....	6205-RVA	62MS.....	62-MS
203RRAR10.....	203-KRR2	205TNJ.....	205-KP6	62MST.....	62-MST
203RRAR10N2.....	203-KRR2N	205TNK.....	6205-TNK	62MSTR.....	62-MSTR
203RRAR8.....	203-KRR5	205TTB.....	205-PP9	72MS.....	72-MS
203RRH10.....	203-KRR6	205TTH.....	205-PPB7	72MST.....	72-MST
204BBA4.....	204-RR7	206GGH.....	6206-GGH	80MS.....	80-MS
204BBAR.....	P204-RR6	40MPB.....	40-MPB	85MS.....	85-MS
204BBAR3.....	P204-RR6	40MS.....	40-MS	87504.....	BR87504

Competitor to SKF interchange guide

Federal Mogul	SKF	Federal Mogul	SKF	Federal Mogul	SKF
87MS	87-MS	DC210TTR4.....	GW210-PP4	DS208TT7	W208-PPB7
88107BGG.....	207-KRR14	DC211TT2	W211-PP2	DS208TT9	W208-PPB6
88107BVV	A88107-BVV	DC211TT3	W211-PP3	DS208TTR5	GW208-PPB5
8980DD	P203-PP10	DC211TT5	W211-PP5	DS208TTR6	GW208-PPB6
8984YY.....	P203-KRR3	DC211TTR2.....	GW211-PP2	DS208TTR8	GW208-PPB8
90MS	90-MS	DC211TTR21	GW211-PP25	DS209TT2	W209-PPB2
DC208TT.....	W208-K3	DC211TTR3.....	GW211-PP3	DS209TT4	W209-PPB4
DC208TT10.....	W208-PP10	DC211TTR4.....	GW211-PP17	DS209TT5	W209-PPB5
DC208TT2	W208-K2	DC214TTR2.....	GW214-PP2	DS209TT6	W209PPB10
DC208TT3	W208-PPB3	DC216TTR2.....	GW216-PP2	DS209TT6E.....	W209-PPB6E
DC208TT5	W208-PP5	DS208TT11.....	W208-PPB11	DS209TT6J.....	W209-PPB6E
DC208TT6	W208-PP6	DS208TT12.....	W208-PPB12	DS209TTR10.....	GW209PPB11
DC208TT8	W208-PP8	DS208TT12B.....	W208-PPB12	DS209TTR11.....	GW209PPB11
DC208TTR17	GW208-PP17	DS208TT13.....	W208-PPB13	DS209TTR2	GW209-PPB2
DC209TTR8.....	GW209-PP8	DS208TT2A.....	W208-PPB23	DS209TTR4	GW209-PPB4
DC210TT.....	W210-PP	DS208TT3.....	W208-PPB3	DS209TTR5	GW209-PPB5
DC210TT2	W210-PP2	DS208TT4	W208-PPB7	DS209TTR6P.....	GW209PPB6P
DC210TT4	W210-PP4	DS208TT5	W208-PPB5	DS209TTR8	GW209-PPB8
DC210TTR3.....	GW210-PP3	DS208TT6.....	W208-PPB6	DS210TT2	W210-PPB2

Competitor to SKF interchange guide

Federal Mogul	SKF	Federal Mogul	SKF	Federal Mogul	SKF
DS210TT4	W210-PPB4	ER19	ER19	FD211RJA	DHU211-RJA
DS210TT5	W210-PPB5	ER22	ER22	FDT2316R	FDT2-3/16R
DS210TT6	W210-PPB6	ER27	ER27	FNR 134R	VCJ 1-3/4
DS210TTR2	GW210-PPB2	F08	40-MS	FNR112R	VCJ 1-1/2
DS210TTR4	GW210-PPB4	F14	52-MS	FNR1142R	VCJ 1-1/4S
DS210TTR5R	GW210-PPB5	F17	62-MS	FNR114R	VCJ 1-1/4
DS211TT2	W211-PPB2	FB347R	FB3-47-R	FNR138R	VCJ 1-3/8
DS211TT3	W211-PPB3	FB352R	FB3-52-R	FNR1516R	VCJ 15/16
DS211TT4	W211-PPB4	FB362R	FB3-62-R	FNR1716R	VCJ 1-7/16
DS211TT6	W211-PPB6	FB52R	FB52-R	FNR1R	VCJ 1
DS211TTR13	GW211PPB13	FD209R	DHU491-A	FWG11116R	RCJ1-11/16
DS211TTR14	GW211PPB14	FD209RA	DHU491-A	FWG112R	RCJ 1-1/2
DS211TTR2	GW211-PPB2	FD209RB	DHU 1-1/2R	FWG114R	RCJ 1-1/4
DS211TTR3	GW211-PPB3	FD209RJ	DHU491-A	FWG11516R	RCJ1-15/16
DS211TTR8R	GW211-PPB8	FD209RK	DHU 1-1/4	FWG118R	RCJ 1-1/8
DS211TTR9	GW211-PPB9	FD209RM	DHU 1-1/8	FWG1316RM	RCJ1-3/16M
DS214TTR5	GW214-PPB5	FD211RA	DHU 2-3/16	FWG134R	RCJ 1-3/4
ER14	ER14	FD211RB	DHU 2-3/16	FWG138R	RCJ 1-3/8
ER16	ER16	FD211RE	DHU 1-3/4E	FWG1516R	RCJ 15/16

Competitor to SKF interchange guide

Federal Mogul	SKF	Federal Mogul	SKF	Federal Mogul	SKF
FWG158R	RCJ 1-5/8	HPC014GP	205-KRR2	NPC014RPC	RA014-RR
FWG1716R	RCJ 1-7/16	HPC100GP	206-KRR6	NPC015RPC	RA015-RR
FWG1916R	RCJ 1-9/16	HPC100TP	206-KPP3	NPC100RPC	RA100-RR
FWG1R	RCJ 1	HPC104TPA	208-PPBA	NPC102RPC	RA102-RR
FWG2316R	RCJ 2-3/16	HPS014GP	205-KRRB2	NPC103RP2C	RA103-RR2
FWG2716R	RCJ 2-7/16	HPS100GP	206-KRRB6	NPC103RPC	RA103-RR
FWG2R	RCJ 2	HPS100GR	206-KRRB6	NPC104RPC	RA104-RR
FWG34R	RCJ 3/4	HPS100TPD	206-KPPB5	NPC106RPC	RA106-RR
G100MSA	G100-MSA	HPS102GPE	207-KRRB12	NPC107RPC	RA107-RR
G52MSA	G52-MSA	HPS102GR	G207-KPPB2	NPC108RPC	RA108-RR
G62MSA	G62-MSA	HPS103GP3	207-KRRB17	NPS008RPC	RA008-RRB
G62MSB	G62-MSB	HPS104TR	W208-PPB15	NPS008RRC	GRA008-RRB
G72MSA	G72-MSA	HPS108GPA	209-KRRBA	NPS010RPC	RA010-RRB
G80MSA	G80-MSA	HPS108GPB	209-KRRBB	NPS010RRC	GRA010-RRB
G85MSA	G85-MSA	HPS108GPH	209-KRRB2	NPS012RPC	RA012-RRB
G85MSB	G85-MSB	NPC008RPC	RA008-RR	NPS012RRC	GRA012-RRB
G90MSA	G90-MSA	NPC010RPC	RA010-RR	NPS014RPC	RA014-RRB
G90MSB	G90-MSB	NPC010RR	RA010-RR	NPS014RRC	GRA014-RRB
HPC011GP	204-KRR2	NPC012RPC	RA012-RR	NPS015RPC	RA015-RRB

Competitor to SKF
interchange guide - cont.

Competitor to SKF interchange guide

Federal Mogul	SKF	Federal Mogul	SKF	Federal Mogul	SKF
NPS015RRC	GRA015-RRB	NPS108RPC	RA108-RRB	PWG112RS	RAS 1-1/2
NPS100RPC	RA100-RRB	NPS108RRC	GRA108-RRB	PWG114R	RAK 1-1/4
NPS100RRC	GRA100-RRB	NPS112RPC	RA112-RR	PWG114RS	RAS 1-1/4
NPS101RPC	RA101-RRB	P85R	AK09	PWG11516R	RAK1-15/16
NPS101RRC	RA101-RRB	PNR112R	VAK 1-1/2	PWG118R	RAK 1-1/8
NPS102RPC	RA102-RRB	PNR1142R	VAK 1-1/4S	PWG1316R	RAK 13/16
NPS102RRC	GRA102-RRB	PNR114R	VAK 1-1/4	PWG1316RM	RAK1-3/16M
NPS103RP2C	RA103-RRB2	PNR118R	VAK 1-1/8	PWG1316RSM	RAS1-3/16M
NPS103RPC	RA103-RRB	PNR1316RM	VAK1-3/16M	PWG134R	RAK 1-3/4
NPS103RR2C	GRA103RRB2	PNR138R	VAK 1-3/8	PWG138R	RAK 1-3/8
NPS103RRC	GRA103-RRB	PNR1516R	VAK 15/16	PWG1516R	RAK 15/16
NPS104RPC	RA104-RRB	PNR1716R	VAK 1-7/16	PWG158R	RAK 1-5/8
NPS104RRC	GRA104-RRB	PNR1R	VAK 1	PWG1716R	RAK 1-7/16
NPS105RPC	RA105-RRB	PNR34R	VAK 3/4	PWG178R	RAK 1-7/8
NPS105RRC	RA105-RRB	PNR58R	VAK 5/8	PWG1R	RAK 1
NPS106RPC	RA106-RRB	PNR78R	VAK 7/8	PWG1RS	RAS 1
NPS106RRC	GRA106-RRB	PWG11116R	RAK1-11/16	PWG2316R	RAK 2-3/16
NPS107RPC	RA107-RRB	PWG112R	RAK 1-1/2	PWG2716R	RAK 2-7/16
NPS107RRC	GRA107-RRB	PWG112R	TAK 1-1/2	PWG2R	RAK 2

Competitor to SKF interchange guide

Federal Mogul	SKF	Federal Mogul	SKF	Federal Mogul	SKF
PWG34R.....	RAK 3/4	SATNR 34R.....	SCJT 3/4	SNPS108RR.....	GYA108-RRB
PWG78R.....	RAK 7/8	SATNR 58R.....	SCJT 5/8	SNPS20RR.....	GYAE20-RRB
PWT1R.....	TAK 1	SATNR1142R.....	SCJT1-1/4S	SPB 1.....	PB 1
S202FF.....	202-NPPB	SATNR114R.....	SCJT 1-1/4	SPB 34.....	PB 3/4
S203FF.....	203-NPPB	SATNR1716R.....	SCJT1-7/16	SPB1.....	PB 1
S204FF.....	204-NPPB	SATNR1R.....	SCJT 1	SPB34.....	PB 3/4
S205FF.....	205-NPPB	SATNR34R.....	SCJT 3/4	SPB58.....	PB 5/8
S206FF.....	206-NPPB	SATNR58R.....	SCJT 5/8	SPNR114RS.....	SAS 1-1/4
S207FF.....	207-NPPB	SNPS010RR.....	GYA010-RRB	SPNR118RS.....	SAS 1-1/8
S208FF.....	208-NPPB	SNPS012RR.....	GYA012-RRB	SPNR12RS.....	SAS 1/2
S209FF.....	S6209-2RSJ	SNPS014RR.....	GYA014-RRB	SPNR138RS.....	SAS 1-3/8
S305FF.....	305-NPPB	SNPS015RR.....	GYA015-RRB	SPNR1716RS.....	SAS 1-7/16
SAFNR 114R.....	SCJ 1-1/4	SNPS100RR.....	GYA100-RRB	SPNR1RS.....	SAS 1
SAFNR112R.....	SCJ 1-1/2	SNPS102RR.....	GYA102-RRB	SPNR34RS.....	SAS 3/4
SAFNR114R.....	SCJ 1-1/4	SNPS103RR.....	GYA103-RRB	SPNR58RS.....	SAS 5/8
SAFNR118R.....	SCJ 1-1/8	SNPS103RR2.....	GYA103RRB2	SWPS104TR.....	GY1104KRRB
SAFNR1R.....	SCJ 1	SNPS104RR.....	GYA104-RRB	SWPS108TR.....	GY1108KRRB
SATNR 1716R.....	SCJT1-7/16	SNPS106RR.....	GYA106-RRB	T08.....	40-MST
SATNR 1R.....	SCJT 1	SNPS107RR.....	GYA107-RRB	T12.....	47-MST

Competitor to SKF
interchange guide - cont.

Competitor to SKF interchange guide

Federal Mogul	SKF	Federal Mogul	SKF	Federal Mogul	SKF
T14.....	52-MST	TWG134R.....	RCJT 1-3/4	WPC111GPC.....	1111-KRR
T17.....	62-MST	TWG1716R.....	RCJT1-7/16	WPC112GPC.....	1112-KRR
T20.....	72-MST	TWG1R.....	RCJT 1	WPC112GRC.....	G1112-KRR
TNR112R.....	VCJT 1-1/2	TWG34R.....	RCJT 3/4	WPC114GPC.....	1114-KRR
TNR1142R.....	VCJT1-1/4S	TWT1R.....	TCJT 1	WPC115GPC.....	1115-KRR
TNR114R.....	VCJT 1-1/4	WC87500.....	200-KTD	WPS012GPC.....	1012-KRRB
TNR118R.....	VCJT 1-1/8	WPC012GPC.....	1012-KRR	WPS012GRC.....	G1012-KRRB
TNR1316RM.....	VCJT1-3/16	WPC014GPC.....	1014-KRR	WPS013GRC.....	G1013-KRRB
TNR138R.....	VCJT 1-3/8	WPC100GRC.....	G1100-KRR	WPS014GPC.....	1014-KRRB
TNR1716R.....	VCJT1-7/16	WPC100TRC.....	G1100-KRR	WPS014GRC.....	G1014-KRRB
TNR1R.....	VCJT 1	WPC103GP2C.....	1103-KRR3	WPS014TPC.....	1014-KPPB3
TNR34R.....	VCJT 3/4	WPC103GPC.....	1103-KRR	WPS015GPC.....	1015-KRRB
TNR58R.....	VCJT 5/8	WPC104GPC.....	1104-KRR	WPS015GRC.....	G1015-KRRB
TNR78R.....	VCJT 7/8	WPC104GRC.....	G1104-KRR	WPS100GPC.....	1100-KRRB
TR14.....	52-MSTR	WPC106GPC.....	1106-KRR	WPS100GRC.....	G1100-KRRB
TR17.....	62-MSTR	WPC107GPC.....	1107-KRR	WPS100TPC.....	1100-KRRB
TR20.....	72-MSTR	WPC108GPC.....	1108-KRR	WPS100TRC.....	G1100-PPB3
TWG112R.....	RCJT 1-1/2	WPC108GRC.....	G1108-KRR	WPS101GRC.....	G1101-KRRB
TWG114R.....	RCJT 1-1/4	WPC108TPC.....	G1108-KRR	WPS102GPC.....	1102-KRRB

Competitor to SKF
interchange guide - cont.

Competitor to SKF interchange guide

Federal Mogul	SKF	Federal Mogul	SKF	Federal Mogul	SKF
WPS102GRC.....	G1102-KRRB	WPS108GRC.....	G1108-KRRB	WPS207GRC.....	G1207-KRRB
WPS102GRN.....	G1102-KRRB	WPS108TRC.....	G1108-PPB3	WPSH203RRC.....	GN203-KRRB
WPS103GP2C.....	1103-KRRB3	WPS109GRC.....	G1109-KRRB		
WPS103GPC.....	1103-KRRB	WPS110GPC.....	1110-KRRB		
WPS103GR2C.....	G1103KRRB3	WPS110GRC.....	G1110-KRRB		
WPS103GRC.....	G1103-KRRB	WPS111GRC.....	G1111-KRRB		
WPS103TR2C.....	G1103-PPB4	WPS112GPC.....	1112-KRRB		
WPS104GPC.....	1104-KRRB	WPS112GPN.....	1112-KRRB		
WPS104GRC.....	G1104-KRRB	WPS112GRC.....	G1112-KRRB		
WPS104TRC.....	G1104-PPB2	WPS112TRC.....	G1112-PPB4		
WPS105GRC.....	G1105-KRRB	WPS114GRC.....	G1114-KRRB		
WPS106GPC.....	1106-KRRB	WPS115GPC.....	1115-KRRB		
WPS106GPEC.....	1106-KRRB	WPS115GRC.....	G1115-KRRB		
WPS106GRC.....	G1106-KRRB	WPS115TRC.....	G1115-PPB3		
WPS106TRC.....	G1106-PPB2	WPS200GPC.....	1200-KRRB		
WPS107GPC.....	1107-KRRB	WPS200GRC.....	G1200-KRRB		
WPS107GRC.....	G1107-KRRB	WPS200TRC.....	G1200-PPB4		
WPS107TRC.....	G1107-PPB2	WPS203GRC.....	G1203-KRRB		
WPS108GPC.....	1108-KRRB	WPS203GRC.....	G1203-PPB4		

Competitor to SKF
interchange guide - cont.

Competitor to SKF interchange guide

NTN	SKF	NTN	SKF	NTN	SKF
16210200.....	GRA115RRB2	1AS0878.....	W208-PPB13	2AS081.....	W208-PPB6
1AC081.316.....	W208-PPB7	203RRAR10N2AQ3.....	203-KRR2N	2AS081.18D1.....	GW208-PPB5
1AC081316.....	W208-PPB7	207NPPB.....	207-NPPB	2AS08118.....	W208-PPB5
1AC09D1V1.....	GW209PPB11	2AC08112.....	W208-PPB23	2AS08118D1.....	GW208-PPB8
1AC09D1V3.....	GW209PPB11	2AH0578.....	205-KRRB2	2AS091.14.....	W209-PPB5
1AC112.316D1V1.....	GW211-PPB9	2AH061.....	206-KRRB6	2AS09114.....	W209-PPB5
1AC112316D1V1.....	GW211-PPB9	2AH0612E.....	206-KRRB6	2AS09114D.....	GW209-PPB5
1AH041116.....	204-KRR2	2AH061L014.....	206-KRRB6	2AS09114D1.....	GW209-PPB8
1AH0578.....	205-KRR2	2AH061L014*JD.....	206-KRRB6	2AS101.18.....	W210-PPB6
1AH061.....	206-KRR6	2AH061V4.....	206-KRRB6	2AS101.18.....	W210-PPB6
1AH061A2L014.....	206-KRR6	2AH071.14V1.....	207-KPPB3	3AC09.....	GW209-PPB2
1AH061L014.....	206-KRR6	2AH071.18D1V3.....	G207-KPPB2	3AC09.....	W209-PPB2
1AH061L014*JD.....	206-KRR6	2AH07118.....	207-KRRB12	3AC091.12.....	W209-PPB4
1AH061V3.....	206-KPP3	2AH081.14V4.....	W208-PPB16	3AC091.12D1.....	GW209-PPB4
1AH061V3*JD.....	206-KPP3	2AH081.14V4*JD.....	W208-PPB16	3AC09112.....	W209-PPB4
1AS081.....	W208-PPB6	2AH08114V2.....	W208-PPB16	3AC09112D1.....	GW209-PPB4
1AS081.18.....	W208-PPB5	2AH091.12.....	209-KRRB2	3AC0912.....	W209-PPB4
1AS08118.....	W208-PPB5	2AH09112.....	209-KRRB2	3AC09D.....	GW209-PPB2
1AS081532D1.....	GW208-PPB5	2AH08114V2.....	W208-PPB16	3AC09D1.....	GW209-PPB2

Competitor to SKF interchange guide

NTN	SKF	NTN	SKF	NTN	SKF
3AC101.1516.....	W210-PPB2	3AS11112	W211-PPB3	6203LLU19.05CS#01.....	6203-RR12
3AC101.1516D1.....	GW210-PPB2	3AS11112D	GW211-PPB3	6203LUSPECIAL	P203-PP10
3AC101.34.....	W210-PPB5	3AS11112D1	GW211-PPB3	620525.41B.....	205-PP11
3AC101.34D1	GW210-PPB5	3AS142.132D1.....	GW214-PPB4	620525.42PK.....	205-PP11
3AC1011516.....	W210-PPB2	4AS081.18	W208-PPB12	6209LU-W/SPHERICAL OD..	S6209-2RSJ
3AC1011516D1.....	GW210-PPB2	4AS08118	W208-PPB12	6AS081.18	W208-PP8
3AC10134D1	GW210-PPB5	4AS0878.....	W208-PPB11	6AS08118	W208-PP8
3AC112.316	W211-PPB2	4AS0878.....	W208-PPB12	6AS091 18	W208-PP8
3AC112.316D1	GW211-PPB2	4AS111.12	W211-PPB6	6AS111.12V1.....	W211-PP5
3AC112316	W211-PPB2	4AS11112	W211-PPB6	6AS11112V	W211-PP5
3AC112316D	GW211-PPB2	5AC081.12.....	W208-PP10	6AS11112V1.....	W211-PP5
3AC112316D1	GW211-PPB2	5AC08112.....	W208-PP10	7AC101.1516.....	W210-PP2
3AC14D1.....	GW214-PPB2	5AS081	W208-PP6	7AC101.318D1	GW210-PP3
3AS101 34	W210-PPB4	5AS081.18	W208-PP5	7AC1011516.....	W210-PP2
3AS101.18	W210-PPB4	5AS08118	W208-PP5	7AC11158D1	GW211-PP17
3AS10118	W210-PPB4	6202LLV16.....	202-NPP8	7AC112.316	W211-PP2
3AS10118D1	GW210-PPB4	6202ZZ15875.....	202-NPP5	7AC112.316D1	GW211-PP2
3AS111.12	W211-PPB3	6202ZZ16	202-NPP8	7AC112.316D1V1*JD.....	W211-PP2
3AS111.12D1	GW211-PPB3	6203LLU15.875C3	P203-PP10	7AC112316	W211-PP2

Competitor to SKF interchange guide

NTN	SKF	NTN	SKF	NTN	SKF
7AC112316D1.....	GW211-PP2	AEL204012D1.....	RA012-RRB	AEL208108.....	RA108-RRB
7AS101 18.....	W210-PP4	AEL205014.....	RA014-RRB	AEL208108D.....	GRA108-RRB
7AS101.18D1.....	GW210-PP4	AEL205014D.....	RA014-RRB	AEL208108T.....	GRA108-RRB
7AS10118D1.....	GW210-PP4	AEL205015.....	RA015-RRB	AEL209112D1.....	RA112-RRB
7AS111.12.....	W211-PP3	AEL205100.....	RA100-RRB	AEL210115D1.....	RA115-RRB
7AS111.12D1.....	GW211-PP3	AEL205100D.....	RA100-RRB	AELF204012T.....	VCJT 3/4
7AS11112.....	W211-PP3	AEL206101.....	RA101-RRB	AELF205100T.....	VCJT 1
7AS11112D1.....	GW211-PP2	AEL206102.....	RA102-RRB	AELF207104T.....	VCJT 1-1/4
7AS11112D1.....	GW211-PP3	AEL206102D.....	RA102-RRB	AELFD205100.....	VCJT 1
87504.....	BR87504	AEL206103.....	RA103-RRB	AELPF201008.....	RAK 1/2
885052A.....	205-KRR2	AEL206103T.....	RA103-RRB2	AELPF202010.....	RA010-RRB
88507X2T2LL31.8262A.....	207-KRR14	AEL206104.....	RA103-RRB2	AELPF204012.....	RA012-RRB
AEL201008.....	RA008-RRB	AEL206104D.....	GRA103RRB2	AELPF205015.....	RA014-RRB
AEL201008D.....	RA008-RRB	AEL207104.....	RA104-RRB	AELPF205100.....	RA100-RRB
AEL202010.....	RA010-RRB	AEL207104D.....	GRA104-RRB	AELPF206102.....	RA102-RRB
AEL202010D.....	RA010-RRB	AEL207106.....	RA106-RRB	AELPF206103.....	RA103-RRB
AEL202010D1.....	RA010-RRB	AEL207106D.....	GRA106-RRB	AELPF206104.....	RA103-RRB2
AEL204012.....	RA012-RRB	AEL207107.....	RA107-RRB	AELPF207104.....	RA104-RRB
AEL204012D.....	RA012-RRB	AEL207107D.....	GRA107-RRB	AELPF207106.....	RA106-RRB

Competitor to SKF interchange guide

NTN	SKF	NTN	SKF	NTN	SKF
AELPF207107.....	RA107-RRB	AJL205100D1C3#01*JD ...	GRA100-RRB	ARL207104D1LLS#01*JD ..	G1104-PPB2
AELPFL202010	RA010-RRB	AJL205100D1CEL014	GRA100-RRB	ARL207106D1C3L014.....	G1106-KRRB
AELPFL204012	RA012-RRB	AJL206102D1C3L014	GRA102-RRB	ARL207107D1C3L014.....	G1107-KRRB
AELPFL205015	RA014-RRB	AJL206102D1CEL014	GRA102-RRB	ARL208108D1C3#01*JD ...	G1108-KRRB
AELPFL205100	RA100-RRB	AJL206104D1C3L014	GRA103RRB2	ARL208108D1C3L014.....	G1108-KRRB
AELPFL206102	RA102-RRB	AJL206104DK32A	GRA103RRB2	ARL209112D1C3#01*JD ...	G1112-KRRB
AELPFL206103	RA103-RRB	AJL207104D1C3L014	GRA104-RRB	ARL209112D1C3L014.....	G1112-KRRB
AELPFL206104	RA103-RRB2	AJL207106D1C3L014	GRA106-RRB	ARL211200D1C3#01*JD ...	G1200-KRRB
AELPFL207104	RA104-RRB	AJL208108D1C3#01*JD ...	GRA108-RRB	ARL211200D1C3L014.....	G1200-KRRB
AELPFL207106	RA106-RRB	AJL208108D1C3L014	GRA108-RRB	AS202010	GYA010-RRB
AELPFL207107	RA107-RRB	AL205100C3L014	RA100-RRB	AS204.....	GYAE20-RRB
AELPL201008T.....	RAK 1/2	AL207105.....	RA105-RRB	AS204012	GYA012-RRB
AELPL201010T	VAK 5/8	AL208101.....	RA108-RRB	AS205014	GYA014-RRB
AELPL202010.....	VAK 5/8	AL211200.....	GRA200-RRB	AS205015	GYA015-RRB
AELPL202010T	VAK 5/8	ARL205013D1C3L014.....	G1013-KRRB	AS205100	GYA100-RRB
AELS204012.....	RA012-RR	ARL205100D1C3L014.....	G1100-KRRB	AS206102	GYA102-RRB
AELS205100.....	RA100-RR	ARL206104D1C3L014.....	G1103KRRB3	AS206103	GYA103-RRB
AELS206102N.....	RA102-RR	ARL206104D1LLS#01*JD ..	G1103-PPB4	AS206104	GYA103RRB2
AJL205014D1C3#01*JD....	GRA014-RRB	ARL207104D1C3L014.....	G1104-KRRB	AS207104	GYA104-RRB

Competitor to SKF interchange guide

NTN	SKF	NTN	SKF	NTN	SKF
AS207106	GYA106-RRB	ER16	ER16	JEL209112D1	GRA112-RRB
AS207107	GYA107-RRB	ER22	ER22	JEL210115D1	GRA115-RRB
ASFD205100	VCJT 1	ER27	ER27	JEL210200D1	GRA115RRB2
ASPL205100T	GRA100-RRB	FD209RJA8810	DHU491-A	JEL211200D1	GRA200-RRB
AUL205100D1	G1100-KRRB	FD209TTRJAN3AS	DHU491-A	JEL211203D1	GRA203-RRB
AULFU207106D1	RCJ 1-3/8	JEL204012D1	GRA012-RRB	JELFD205100	VCJT 1
CAS#FX06AD1HALF	62-MSTR	JEL205014D1	GRA014-RRB	JL202010C3L014	RA010-RRB
CS202LLU	202-NPPB	JEL205015D1	GRA015-RRB	JL204012C3L014*JD	RA012-RRB
CS204LL	204-NPPB	JEL205100D1	GRA100-RRB	JL205014C3L014	RA014-RRB
CS204LLU	204-NPPB	JEL206102D1	GRA102-RRB	JL205014C3L014*JD	RA014-RRB
CS205LL	205-NPPB	JEL206102D1C32	RA102-RRB	JL205100C3L014*JD	RA100-RRB
CS205LLU	205-NPPB	JEL206103D1	GRA103-RRB	JL206102C32A	RA102-RRB
CS206LL	206-NPPB	JEL206104D1	GRA103RRB2	JL206102C3L014*JD	RA102-RRB
CS208LLU	208-NPPB	JEL206104D1C32	RA103-RRB2	JL206103C3L014	RA103-RRB
CS209	S6209-2RSJ	JEL207104D1	GRA104-RRB	JL206104C32E	RA103-RRB2
CS305LLU	305-NPPB	JEL207106D1	GRA106-RRB	JL206104C3L014*JD	RA103-RR
CS6204LL	204-NPPB	JEL207107D1	GRA107-RRB	JL206104C3L014*JD	RA103-RRB2
DC210TTA	W210-PP	JEL208108D1	GRA108-RRB	JL207104C3L014	RA104-RRB
ER14	ER14	JEL209111D1	GRA111-RRB	JL207104C3L014*JD	RA104-RRB

Competitor to SKF interchange guide

NTN	SKF	NTN	SKF	NTN	SKF
JL207106C3L014*JD	RA106-RRB	PF206.....	62-MS	SBX1055C3L014EL*JD	G1115-KRRB
JL207107C3L014	RA107-RRB	PF206D1*JD	G62-MSA	SC0172LLUPX1L014.....	202-NPP9
JL208108C3L014*JD	RA108-RR	PF207	72-MS	SC0228LLUL014Q2*JD	202-NPP5
JL208109C3L014	RA108-RRB	PF207 (12).....	G72-MSB	SC0274LL2A	P203-KRR3
JL209112C3L014*JD	GRA100-RRB	PF207HALF	72-MS	SC0440LC3.....	P204-RR6
JL210114C3L014*JD	RA112-RRB	PFL203.....	40-MST	SC0440LLC31E.....	P204-RR6
JLS204012C3L014.....	RA012-RR	PFL204.....	47-MST	SC0440LLC31E.....	GW211-PPB3
JLS205014C3L014.....	RA014-RR	PFL205.....	52-MST	SC0451IIC3.....	P204-RR6
JLS205015C3L014*JD	RA100-RR	PFL206.....	62-MST	SX0153LLCS13PX1#01	203-KRR5
JLS205100C3L014.....	RA100-RR	PFL207.....	72-MST	SX0153LLCS13PX101*JD..	203-KRR5
JLS206102A2C3#01*JD.....	RA102-RR	RL209110D1V4.....	G1110-KRRB	SX0318LLU	203-KRR6
JLS206102C3L014.....	RA102-RR	SBX06A10C4L014	206-KPPB5	SX0360LLLO14.....	P203-KRR3
JLS206102C3L014*JD	RA102-RR	SBX0762C4L014.....	207-KRRB12	SX0361LLCS132E.....	203-KRR2
JLS206103C3L014*JD	RA103-RRB	SBX0762C4L014*JD	207-KRRB12	SX0361LLCS13L014	203-KRR2
JLS206104A1C3L014.....	RA103-RR2	SBX0792.....	ER22	SX0361LLCS13L014*JD	203-KRR2
JLS206104C3L014*JD	52-MS	SBX0876C40G	W208-K3	SX0366LULC32A.....	6203-VSP14
PF203	40-MS	SBX0877C40G	W208-K2	SX0385LXLC2PX13A.....	204-KRD4
PF204	47-MS	SBX0977C3L014Q1	209-KRRB2	SX03A18LULC3PX1#01	6204-FREN
PF205.....	52-MS	SBX0991.....	ER27	SX04A06LULC3PX1L014.....	205-KRP2

Competitor to SKF interchange guide

NTN	SKF	NTN	SKF	NTN	SKF
SX04A22LA1PX12E.....	205-KR3	UEL205015D	G1015-KRRB	UEL207106	G1106-KRRB
SX07B24LLC32A.....	A88107-BVV	UEL205015D1.....	G1015-KRRB	UEL207106D	G1106-KRRB
SX07B24LLC3L014	A88107-BVV	UEL205100	G1100-KRRB	UEL207106D1.....	G1106-KRRB
SX0891LC3.....	208-KP2	UEL205100D	G1100-KRRB	UEL207107	G1107-KRRB
UC205100D1	GY1100KRRB	UEL205100D1.....	G1100-KRRB	UEL207107D	G1107-KRRB
UC206104D1	GY1104KRRB	UEL206101D	G1101-KRRB	UEL207107D1.....	G1107-KRRB
UC207104D1	GY1104KRRB	UEL206101D1.....	G1101-KRRB	UEL208108D1.....	G1108-KRRB
UC208108D1	GY1108KRRB	UEL206102	G1102-KRRB	UEL208109D1.....	G1109-KRRB
UCF205100T.....	RCJ 1	UEL206102D	G1102-KRRB	UEL209110D	G1110-KRRB
UCFL205100T.....	VCJT 1	UEL206102D1.....	G1102-KRRB	UEL209110D1.....	G1110-KRRB
UCFLX05100T	VCJT 1	UEL206103D	G1103-KRRB	UEL209111D	G1111-KRRB
UCP205100T	RAS 1	UEL206103D1.....	G1103-KRRB	UEL209111D1.....	G1111-KRRB
UCS205100D1NR	ER16	UEL206104	G1103KRRB3	UEL209112D	G1112-KRRB
UCS206103D1NR	ER19	UEL206104D	G1103KRRB3	UEL209112D1.....	G1112-KRRB
UEL204012DI	G1012-KRRB	UEL206104D1.....	G1103KRRB3	UEL210114D	G1114-KRRB
UEL205013D1.....	G1013-KRRB	UEL207104D	G1104-KRRB	UEL210114D1.....	G1114-KRRB
UEL205014D	G1014-KRRB	UEL207104D1.....	G1104-KRRB	UEL210115D	G1115-KRRB
UEL205014D1.....	G1015-KRRB	UEL207105D	G1105-KRRB	UEL210115D1.....	G1115-KRRB
UEL205015	G1015-KRRB	UEL207105D1.....	G1105-KRRB	UEL211200D	G1200-KRRB

Competitor to SKF interchange guide

NTN	SKF	NTN	SKF	NTN	SKF
UEL211200D1.....	G1200-KRRB	UELFU209112T.....	RCJ 1-3/4	UELP209110T.....	RAK 1-5/8
UEL211203D.....	G1203-KRRB	UELFU210115T.....	RCJ1-15/16	UELP209110T.....	RAS 1-5/8
UEL211203D1.....	G1203-KRRB	UELFU210200T.....	RCJ 2	UELP209111T.....	RAK1-11/16
UELF205100T.....	RCJ 1	UELFU211200T.....	RCJ 2	UELP209112T.....	RAK 1-3/4
UELFL205014T.....	RAK 7/8	UELFU211203T.....	RCJ 2-3/16	UELP210114T.....	RAK 1-7/8
UELFL205100T.....	VCJT 1	UELP204012T.....	RAK 3/4	UELP210115T.....	RAK1-15/16
UELFU205100T.....	VCJT 1	UELP205013T.....	RAK 13/16	UELP210200T.....	RAK 2
UELFU204012T.....	RCJ 3/4	UELP205013T.....	RAS 13/16	UELP211200T.....	RAS 2
UELFU205015T.....	RCJ 15/16	UELP205014T.....	RAK 7/8	UELPL205013T.....	RAK 13/16
UELFU205100T.....	RCJ 1	UELP205100T.....	RAK 1	UELPL205014T.....	RAK 7/8
UELFU206102T.....	RCJ 1-1/8	UELP205100T.....	RAS 1	UELPL205015T.....	RAK 15/16
UELFU206103T.....	RCJ1-3/16M	UELP206102T.....	RAK 1-1/8	UELPL205100T.....	RAK 1
UELFU207104T.....	RCJ 1-1/4	UELP206103T.....	RAK1-3/16M	UELPL206102T.....	RAK 1-1/8
UELFU207106T.....	RCJ 1-3/8	UELP206103T.....	RAS1-3/16M	UELPL206103T.....	RAK1-3/16M
UELFU207107T.....	RCJ 1-7/16	UELP207104T.....	RAK 1-1/4	UELPL207104T.....	RAK 1-1/4
UELFU208108T.....	RCJ 1-1/2	UELP207104T.....	RAS 1-1/4	UELPL207106T.....	RAK 1-3/8
UELFU208109T.....	RCJ 1-9/16	UELP207106T.....	RAK 1-3/8	UELPL207107T.....	RAK 1-7/16
UELFU209110T.....	RCJ 1-5/8	UELP207107T.....	RAK 1-7/16	UELPL208108T.....	RAK 1-1/2
UELFU209111T.....	RCJ1-11/16	UELP208108T.....	RAS 1-1/2	UELPL209110T.....	RAK 1-5/8

Competitor to SKF interchange guide

NTN	SKF	NTN	SKF	NTN	SKF
UELPL209111T.....	RAK1-11/16	VELF207104T.....	RCJ 1-1/4		
UELPL209112T.....	RAK 1-3/4	VELF208108T.....	RCJ 1-1/2		
UELPL210114T.....	RAK 1-7/8	VELF209112T.....	RCJ 1-3/4		
UELPL210115T.....	RAK1-15/16	VELP205014T.....	RAK 7/8		
UELPL210115T.....	RAK1-15/16	VELP205100T.....	RAK 1		
UELPL210200T.....	RAK 2	VELP206102T.....	RAK 1-1/8		
UELPL211200T.....	RAK 2	VELP206103T.....	RAK1-3/16M		
UELPL211203T.....	RAK 2-3/16	VELP207104T.....	RAK 1-1/4		
UL206102D1V7*JD.....	G1102-KRRB	VELP207106T.....	RAK 1-3/8		
VEL205100.....	1100-KRRB	VELP207107T.....	RAK 1-7/16		
VEL205100T.....	G1100-KRRB	VELP208108T.....	RAK 1-1/2		
VEL206102.....	1102-KRRB	VELP209112T.....	RAK 1-3/4		
VEL206103T.....	G1103KRRB3	VELP210115T.....	RAK1-15/16		
VEL207104T.....	G1104-KRRB	VELP211200T.....	RAK 2		
VEL207107T.....	G1107-KRRB	VELS205014.....	1014-KRR		
VEL208108T.....	G1108-KRRB	WC87500.....	200-KTD		
VEL210115T.....	G1115-KRRB				
VEL211200T.....	G1200-KRRB				
VELF205100T.....	RCJ 1				

Conversion chart - inches to millimeters

Basis 1 in. = 25.400 mm

Inches	0.0	0.1	0.2	0.3	0.4	0.5	0.6	0.7	0.8	0.9	Inches
0		2.54	5.08	7.62	10.16	12.70	15.24	17.78	20.32	22.86	0
1	25.40	27.94	30.48	33.02	35.56	38.10	40.64	43.18	45.72	48.26	1
2	50.80	53.34	55.88	58.42	60.96	63.50	66.04	68.58	71.12	73.66	2
3	76.20	78.74	81.28	83.82	86.36	88.90	91.44	93.98	96.52	99.06	3
4	101.60	104.14	106.68	109.22	111.76	114.30	116.84	119.38	121.92	124.46	4
5	127.00	129.54	132.08	134.62	137.16	139.70	142.24	144.78	147.32	149.86	5
6	152.40	154.94	157.48	160.02	162.56	165.10	167.64	170.18	172.72	175.26	6
7	177.80	180.34	182.88	185.42	187.96	190.50	193.04	195.58	198.12	200.66	7
8	203.20	205.74	208.28	210.82	213.36	215.90	218.44	220.98	223.52	226.06	8
9	228.60	231.14	233.68	236.22	238.76	241.30	243.84	246.38	248.92	251.46	9
10	254.00	256.54	259.08	261.62	264.16	266.70	269.24	271.78	274.32	276.86	10

Conversion chart
(inches to millimeters)

Product images



RAK



VCJT



VCJ



SAS



SCJT



SCJ



VAK



RCJT



RCJ

Product images



GRA



GYA



ER



PB



MS



MSTR



MST



MSA (3 bolt)



MSA (4 bolt)

Product images - cont.

Product images



CJ



AK



CJT



Square bore



Hex bore

Notes

Notes page

Notes

Notes page

Notes

Notes page

WARNING: Proper selection of the products listed for sale in this catalog is essential to minimize the risk of any seal, bearing or other product failure. Such failures can result in property damage or severe personal injury to operators of machinery, vehicles or to others. You must carefully evaluate the particular application on or into which you intend to install the products. Products in this catalog require installation by an experienced professional mechanic or qualified maintenance professional.

The product properties and operating parameters described in this catalogue are based upon tests conducted by SKF or reported by others. SKF does not assume any responsibility for errors in the data published in this catalog. The life and performance of the products ultimately depend on a number of factors. These include, for example, selection of product design type, selection of materials for their different properties, handling and installation, operating conditions, including shaft surface or bore conditions, the quantity, quality and chemistry of lubricants and other factors. Severe environments can adversely effect product life or performance. For help in realizing longer SKF product life, and optimal performance for your specific application, contact SKF's Customer Services Department at 1-800-882-0008. You can also submit to our attention the Engineering Work Request form found at the end of this catalogue or visit our web site at <http://www.vsm.skf.com>.

LIMITED WARRANTY

SKF as the seller of the products contained in this catalog warrants to the first user/purchaser that the products sold by it, when properly installed, will be free from defects in material and workmanship. SKF's sole obligation and liability for any defect found to exist in a product sold by SKF contrary to this warranty, and purchaser's sole and exclusive remedy for such defect, shall be limited to: (A) SKF furnishing without additional charge to purchaser, including transportation, a replacement for any of the products sold by SKF which are found by SKF to be defective contrary to this limited warranty, and (B) in the case of products which cannot be repaired or replaced by SKF, SKF shall credit or refund purchaser the purchase price paid therefore; provided, that SKF is advised in writing of such product non-conformance within thirty (30) days of the date of discovery thereof, and that the non-conforming product is returned f.o.b. to SKF's designated warehouse promptly thereafter, but in any case not later than twelve (12) months from the date of original shipment of the product to purchaser by SKF. In no event shall SKF be obligated under this warranty or otherwise in any way whatsoever for normal wear and tear, or for any products sold by SKF which, after delivery by SKF and in SKF's sole determination, have been subjected to accident, abuse, misapplication, improper or faulty repair or installation, improper or faulty maintenance or lubrication, any alteration or neglect, excessive loading or other excessive operating conditions, or for defects caused by or resulting

from purchaser's specifications or designs or otherwise caused by purchaser. **TO THE FURTHEST EXTENT PERMITTED UNDER APPLICABLE LAW, SKF DISCLAIMS LIABILITY, IN TORT OR CONTRACT, IN NEGLIGENCE, STRICT LIABILITY, OR OTHERWISE, FOR ANY OTHER REMEDY OR DAMAGE, WHETHER DIRECT OR INDIRECT, INCIDENTAL OR CONSEQUENTIAL WITH RESPECT TO ITS PERFORMANCE HEREUNDER, INCLUDING WITHOUT LIMITATION WITH RESPECT TO THE PRODUCTS SOLD OR PROVIDED HEREUNDER BY SKF, AND ITS PROVISION OF ANY RELATED SERVICES. THIS EXPRESS WARRANTY IS TO THE EXCLUSION OF ALL OTHER WARRANTIES, EXPRESS OR IMPLIED, INCLUDING WARRANTIES OF MERCHANTABILITY OR FITNESS FOR A PARTICULAR PURPOSE. COSTS INCURRED FOR ROUTINE MAINTENANCE ARE NOT COVERED BY THIS WARRANTY.** Without limiting the generality of the foregoing disclaimer, SKF specifically disclaims liability to purchaser for any loss, cost, or damage incurred as a result of equipment downtime, or loss of use or availability of worksite, lost revenues or lost profits, or losses or liability arising, regardless of whether SKF is on notice of the possibility of such damage or loss and did or could have anticipated same. No other person has been authorized by SKF to undertake or make on behalf of SKF any further representation, warranty or guarantee in addition to or contrary to SKF's warranty made herein or contrary to the limitations and disclaimers provided herein. The exclusive remedies provided in this limited warranty shall not be deemed to have failed of their essential purpose so long as SKF is willing and able to perform to the extent and in the manner prescribed in this warranty.

INFORMATION: Inquiries can be directed to: SKF Customer Services Department, 890 North State Street, Elgin, IL 60123 USA, or call 1-800-882-0008.

LIMITATION ON RETURNS: Any product that is not in conformance with purchaser's description given in its order is returnable for credit or replacement by SKF, provided that SKF is advised in writing by purchaser of such non-conformance within 30 days after the product's delivery to purchaser by SKF, and only after written authorization therefore is given by SKF. Approved returns must be shipped freight prepaid and arrive in good, saleable condition to qualify for credit or replacement.

NOTICE: The SKF part numbering systems for the SKF products are proprietary to SKF. Any improper or unauthorized use of these numbering systems, including adoption or use of any of their part numbers or part number lists, even where the subject of modification or addition, is strictly prohibited and will be prosecuted by SKF as a violation of U.S. and foreign copyright, trademark and unfair competition laws. In addition, use of any SKF trademarks, trade names or packaging schemes, systems, colors or designs is likewise considered a violation of the trademarks, trade names and trade identities rights of SKF USA Inc. and their affiliates. Possible violation of such use should be brought to the attention of SKF: SKF USA Inc., 890 North State Street, Elgin, Illinois 60123 USA, Attn: Catalog Manager.

SKF is your source for a wide range of products covering various industries. From automotive, heavy duty and industrial to agricultural applications, SKF offers a solution to keep your machines operating and your business profitable.

For more information, please contact your local SKF representative at **1-800-882-0008** or visit us at **www.vsm.skf.com**.

To receive updates and news from SKF, please email: **vsm.updates@skf.com**