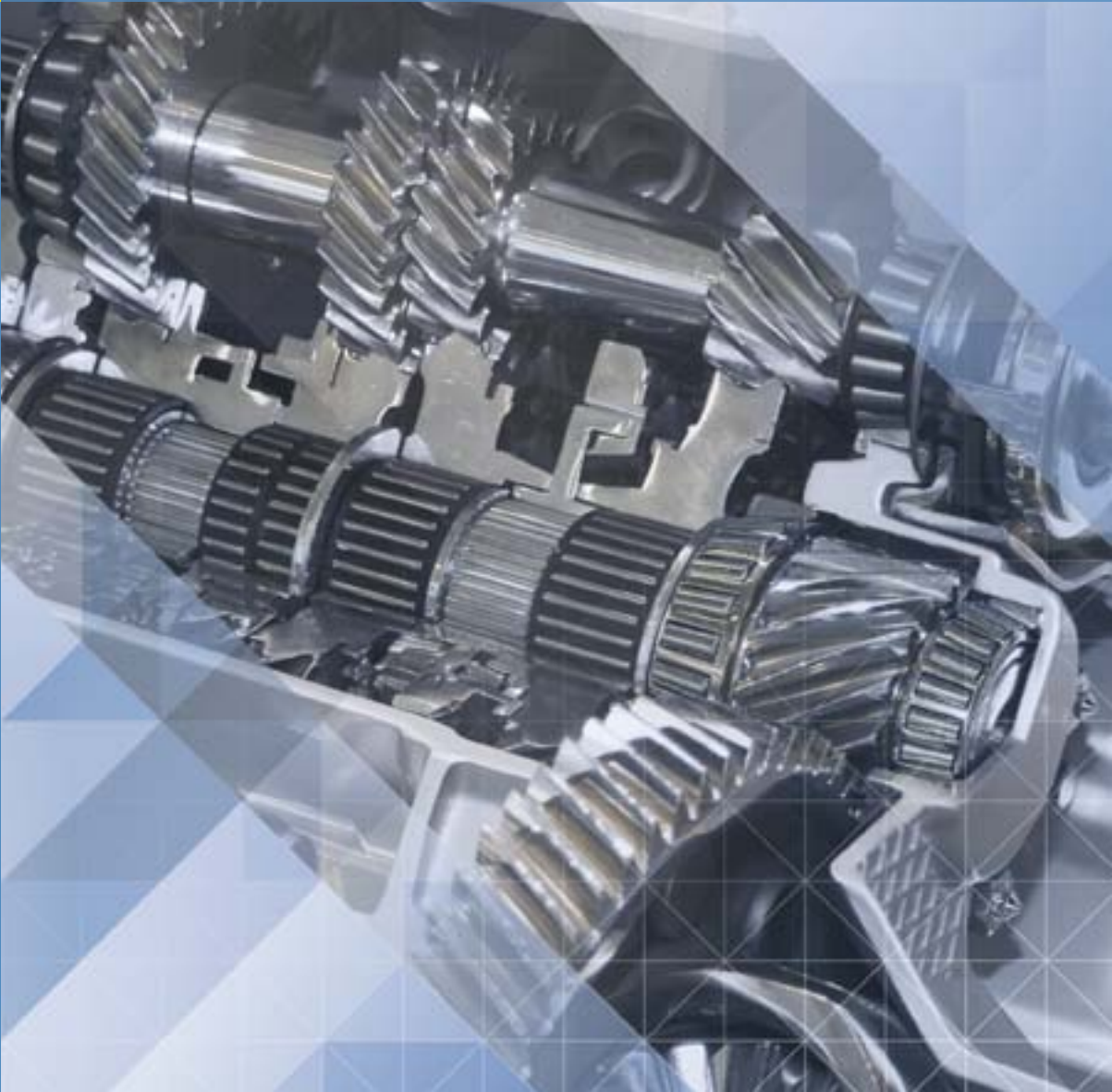


Experts in Bearing Solutions



# Fersa Solutions

## ZF

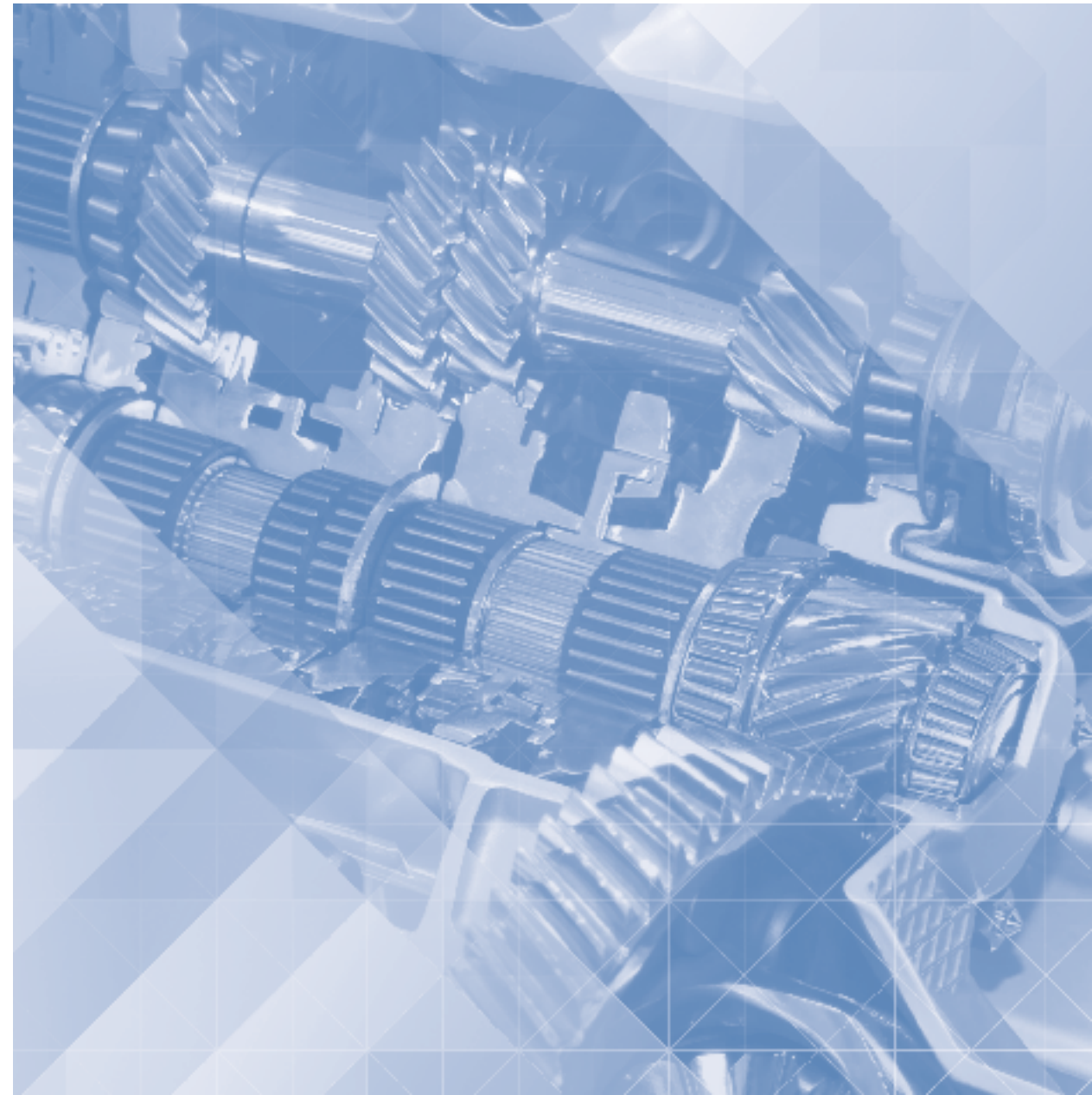


Experts in Bearing Solutions



# Fersa Solutions

ZF



# Index

Índice / Índice / Index / Inhalt / Оглавление / Indeks / المؤشر

The contents of this publication are the copyright of Fersa Bearings and may not be reproduced (even extracts) unless prior written permission is granted. Every care has been taken to ensure the accuracy of the information contained in this publication but no liability for any loss or damage whether direct, indirect or consequential arising out of the use of the information contained herein.

Despite our best efforts to ensure the accuracy of the information contained in this document, errors or omissions cannot be completely ruled out. We disclaim any and all responsibility for such unintentional errors or omissions.

O conteúdo desta publicação é propriedade da Fersa Bearings e não pode ser reproduzido (mesmo que parcialmente) sem autorização prévia por escrito. Foram tomadas todas as medidas para se garantir a exatidão das informações contidas nesta publicação, mas não nos consideramos responsáveis por qualquer perda ou dano, tanto diretos como indiretos ou consequentes resultantes do uso das informações contidas neste documento.

Apesar do nosso esforço para garantirmos a exatidão dos dados deste documento, declinamos qualquer responsabilidade por eventuais erros ou omissões.

El contenido de esta publicación es propiedad de Fersa Bearings y no puede reproducirse (incluso parcialmente) sin autorización previa por escrito. Todos los datos se han tomado para garantizar la exactitud de la información contenida en esta publicación, pero no se hace responsable por cualquier pérdida o daños, ya sean directos, indirectos o consecuentes resultantes del uso de la información contenida en este documento.

A pesar de nuestro esfuerzo para asegurar la exactitud de los datos de este documento, declinamos toda responsabilidad sobre posibles errores u omisiones.

Le contenu de cette publication est soumis aux droits d'auteur de Fersa Bearings et ne peuvent être reproduits (ni même en extraits) sans avoir préalablement obtenu une autorisation écrite. Le plus grand soin a été pris pour garantir l'exactitude des informations contenues dans la publication. Néanmoins, aucune responsabilité ne peut être engagée pour la perte ou les dégâts, qu'ils soient directement ou indirectement liés ou encore conséquents à l'usage des informations contenues.

Malgré nos efforts pour garantir l'exactitude des informations contenues dans ce document, nous ne sommes pas en mesure d'exclure toute possibilité d'erreur ou d'omission. Nous rejetons toute responsabilité pour de telles erreurs ou omissions involontaires.

Die Inhalte dieses Dokuments unterliegen dem Urheberrecht von Fersa Bearings und dürfen weder ganz noch teilweise ohne vorherige schriftliche Genehmigung vervielfältigt werden. Bei der Zusammenstellung der Informationen dieses Dokuments wurde äußerste Sorgfalt angewandt, nichtsdestotrotz übernehmen wir keine Haftung für mittelbare, unmittelbare Verluste oder Schäden bzw. Folgeschäden, die aufgrund der Nutzung der hier enthaltenen Informationen entstehen.

Obwohl jede Anstrengung unternommen wurde, um die Korrektheit der Informationen dieses Dokuments zu gewährleisten, können Fehler oder Auslassungen nicht vollständig ausgeschlossen werden. In diesem Sinne schließen wir jegliche Haftung für derartige unbeabsichtigte Fehler und Auslassungen aus.

Авторское право на содержание этой публикации принадлежит компании Fersa Bearings, и ее воспроизведение (даже частичное) не разрешается без получения письменного разрешения Fersa Bearings. Для обеспечения точности информации, содержащейся в настоящей публикации, были предприняты все возможные меры, однако автор не несет ответственности за какие-либо потери или ущерб (прямой, побочный или косвенный), возникший вследствие использования такой информации.

Несмотря на все усилия, направленные на обеспечение точности информации, которая содержится в настоящем документе, ошибки или упущения не могут быть полностью исключены. Автор отказывается от какой-либо и всей ответственности в связи с такими непреднамеренными ошибками или упущениями.

Treść niniejszej publikacji stanowi własność firmy Fersa Bearings i nie może być powielana (nawet częściowo) bez uzyskania uprzedniej pisemnej zgody. Docho- wano należytej staranności, aby zagwarantować prawidłowość informacji zawartych w niniejszej publikacji, jednak firma nie ponosi w żadnym wypadku odpowiedzialności za jakiegokolwiek straty lub szkody bezpośrednio, pośrednio czy wynikowe związane z wykorzystaniem tych informacji. Pomimo wszelkich starań dołożonych w celu zapewnienia dokładności informacji zawartych w niniejszym dokumencie, nie można w zupełności wykluczyć błędów lub przeoczeń. Zrzekamy się wszelkiej odpowiedzialności za takie niezamierzone błędy lub przeoczenia.

تحتفظ فيرسا بيرنجز بحقوق طبع ونشر محتويات هذا الدليل ولا يجوز إعادة نشرها (حتى المتبقيات) ما لم يتم منح إذن كتابي مسبق، ويتم اتخاذ كل إجراءات الرعاية لضمان دقة المعلومات المتضمنة في هذه النشرة ولكن لا تتحمل الشركة مسؤولية أي فقد أو خسارة سواء أكان مباشر أو غير مباشر، أو تبعية ناتج عن استخدام هذه المعلومات المتضمنة هنا. وعلى الرغم من بذلنا قصارى جهدنا لنضمن دقة المعلومات المتضمنة في هذا المستند، إلا أنه لا يمكن استبعاد الأخطاء أو الحذف تمامًا. نحن نتصل عن أي وكافة المسؤوليات لهذه الأخطاء أو عمليات الحذف غير المقصودة.

00 Introduction 4  
Introdução / Introducción / Introduction / Einleitung / Введение  
/ Wstęp / المؤشر

01 Gearbox 14  
Caixa de Câmbio / Caja de Cambios / Boîte de vitesse / Getriebe /  
Коробка передач / Skrzynia biegów / علبة التروس

02 OEM Cross References 66  
OEM Cruzamento de Refêrencias / OEM Cruce de Referencias  
Références OEM croisées / OEM-Quervergleiche /  
Перевод на маркировку производителя / Odnosiniki OEM /  
مراجع متبادلة مُصنع المعدات الأصلية

# Fersa Solutions



The “Fersa Solution” is our full service approach for bearings for specific applications such as wheel-ends, differentials and gear-boxes for most commercial vehicles. Fersa bearings are manufactured to OEM specifications; starting with the specifications of the raw material to the heat treatment processes, as well as optimized design features.

## SPECIAL HEAT TREATMENT FOR BEARINGS

Optimized material composition for enhanced service life.

All Fersa bearings undergo a special type of Through Hardening heat treatment. The hardening process includes austenization and quenching in a carbon neutral atmosphere. This provides an elevated tensile strength -throughout the part- after quenching, which is then tempered to increase the ductility and toughness.

### Fersa’s added value offer is...

Increased bearing service life and delaying the maintenance of the vehicle.

## OPTIMIZED PROFILES FOR EVERY APPLICATION

OEMs and Tier1 manufacturers know that bearings are a vital element of the drivetrain system. It needs to perform flawlessly under the most critical working conditions. Fersa bearings are designed for heavy duty applications, thus have to withstand very demanding loads. All the bearings that Fersa manufactures, be it for: wheel hub units, wheel-ends, differentials, as well as transmissions feature specific internal geometry, as complex profiling and low roughness.

### Fersa’s added value offer is...

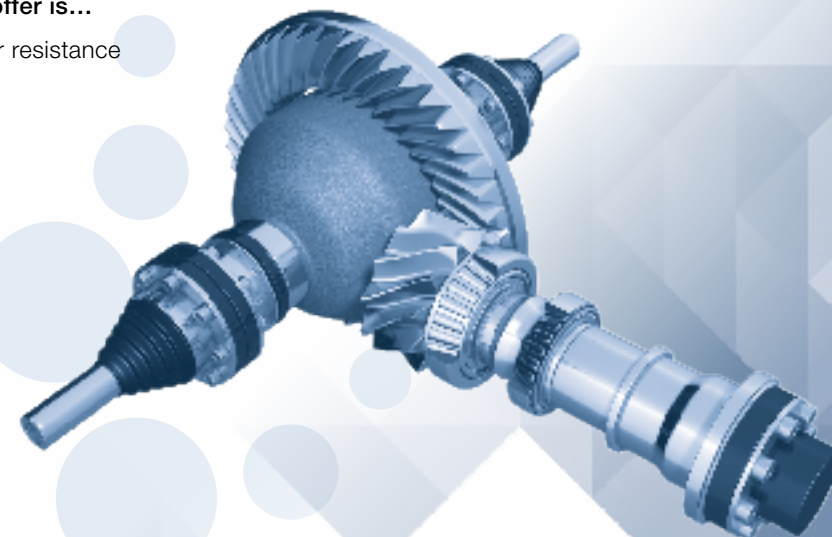
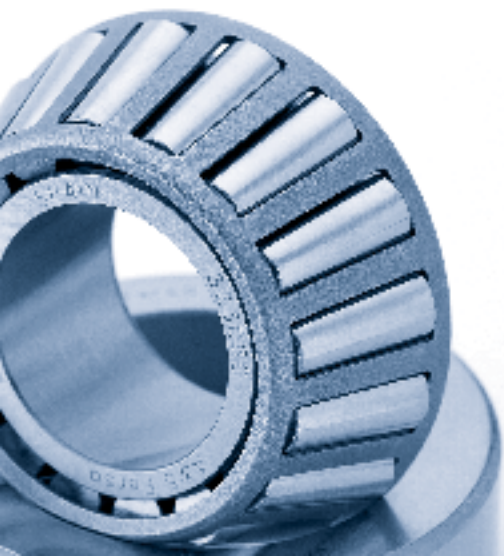
Extending bearing wear resistance

## REDUCED SPACER RANGE FOR PINION APPLICATIONS

Fersa bearings for pinion applications are manufactured according to the toughest OEM specifications, with tighter width tolerances in the back face.

### Fersa’s added value offer is...

Reducing the number of attempts for proper spacer selection during assembly and ensuring an optimum (tighter) pinion preload setting. The final process assembly time is reduced, cost savings are considerably increased.



**Brand** (EN, ES, PT, FR, DE, PL, RU, AR): Marca, Marque, Marke, Marka, Марка, تيجراحتلا قوال عالا

**Model** (EN, ES, PT, FR, DE, PL, RU, AR): Modelo, Modèlo, Modell, Model, Модель, تيجونملا

**Application** (EN, ES, PT, FR, DE, PL, RU, AR): Aplicación, Aplicação, Application, Anwendung, Zastosowanie, Применение, تيجيحتلا

**Position** (EN, ES, PT, FR, DE, PL, RU, AR): Posición, Posição, Position, Position, Położenie, Позиция, عضول

**Fersa Reference** (EN, ES, PT, FR, DE, PL, RU, AR): Referència Fersa, Referência Fersa, Référence Fersa, Fersa Ref., referencyjny Fersa, Номер от Fersa, اسديف عجرم

**OEM Reference** (EN, ES, PT, FR, DE, PL, RU, AR): Referencia OEM, Referência OEM, OEM Référence, OEM Ref., Numer referencyjny OEM, Номер от производителя, قائلصالا تادعلا وعجرم عجرم

POSITION	Fersa	OEM
<b>VOLVO</b> <sup>1°</sup>		
<b>DR80</b> <sup>2°</sup>	<i>Ratio 3, <sup>3°</sup> 4,12/1, 4,55/1, 5,41/1, 1,09/1, 1,19/1</i>	
Bevel pinion, front	<b>HM 911245/HM 911210</b>	184633+184115
Bevel pinion, pilot	*	183703
Bevel pinion <sup>4°</sup>	<b>H 913843/H <sup>5°</sup>10</b>	184635
Differential, left	<b>687/672</b>	181596+181279 / 184637
Differential, right	<b>687/672</b>	181596+181279 / 184637
Reduction shaft, right	*	183676+183831 / 184639
<b>EV71</b>	<i>Series / Ratio - Axle serie <sup>EN</sup> / <sup>ES</sup> Serie / Ratio - Serie de Eje / <sup>PT</sup> Série / Ratio - Eixo série / <sup>FR</sup> Série / ratio - Série d'essieu / <sup>DE</sup> Serie / Verhältnis - Achsserie / <sup>PL</sup> Seria / Przełożenie - Seria osi / <sup>RU</sup> Серия/Соотношение - Серия моста / <sup>AR</sup> روجملا ظلسلس - قيسين / لسلاس</i>	
Bevel pinion, front		<i>Ratio 3,61/1, 1,04/1</i> 31609 / 1523056
Bevel pinion, rear		81400 / 1523058
Differential, left		18459

**N° OEM**

**EN** Search according to OEM Number:

- In the OEM reference List table (page 66) look for the corresponding Fersa reference.
- Find the Fersa reference in the catalog. Please be sure to verify the application referenced.

**ES** Método de búsqueda por N° OEM

- Busque el número de referencia OEM en la tabla Listado de referencia OEM (pag. 66).
- Busque la referencia Fersa en el catalogo y verifique la aplicación.

**PT** Método de busca por N° OEM:

- Busque o número de referencia OEM na tabela Lista de referência OEM (pág. 66).
- Busque a referência Fersa no catálogo, e verifique a aplicação.

**FR** Recherchez la pièce à l'aide du numéro OEM:

- Dans le tableau de la liste des références OEM (page 66), recherchez la référence Fersa correspondante.
- Trouvez la référence Fersa dans le catalogue. Assurez-vous de bien vérifier l'application référencée.

**DE** Suche anhand der OEM-Nummer:

- Suchen Sie in der Liste der OEM-Ref.-Nr. (Seite 66) nach der entsprechenden Fersa-Ref.-Nr.
- Suchen Sie die Fersa-Ref.-Nr. im Katalog. Bitte prüfen Sie die Anwendung anhand der Ref.-Nr.

**PL** Wyszukiwanie według numeru OEM:

- Znajdź odpowiedni numer Fersa w tabeli zawierającej wykaz numerów referencyjnych OEM (strona 66).
- Znajdź w katalogu numer referencyjny Fersa. Pamiętaj o sprawdzeniu odnośnego zastosowania.

**RU** Поиск по номеру производителя:

- В таблице номеров производителей (стр. 66) найдите соответствующий номер Fersa.
- Найдите номер Fersa в каталоге. Не забудьте проверить применение согласно номеру.

**AR** ابحت طبقاً لرقم مصنعو المعدات الأصلية

- في جدول قائمة مرجع مُصنع المعدات الأصلية (الصفحة) ابحت عن مرجع فيرسا المتوافق.
- ابحت عن مرجع فيرسا في الكاتالوج. رجاء تأكد من أن تتحقق من التطبيق الوارد في المرجع.

**Brand** (EN, ES, PT, FR, DE, PL, RU, AR): Marca, Marque, Marke, Marka, Марка, تيجراحتلا قوال عالا

**Model** (EN, ES, PT, FR, DE, PL, RU, AR): Modelo, Modèlo, Modell, Model, Модель, تيجونملا

**Application** (EN, ES, PT, FR, DE, PL, RU, AR): Aplicación, Aplicação, Application, Anwendung, Zastosowanie, Применение, تيجيحتلا

**Axle Model** (EN, ES, PT, FR, DE, PL, RU, AR): Modelo de eje, Modelo de Eixo, Modèle d'essieu, Achsmoðell, Model osi, Модель моста, روجملا تاجونم

**Axle Position** (EN, ES, PT, FR, DE, PL, RU, AR): Tipo de eje, Tipo de eixo, Position de l'essieu, Achsposition, Położenie osi, Позиция моста, روجملا عجرم

**Axle Information** (EN, ES, PT, FR, DE, PL, RU, AR): Información del Eje, Informação de Eixo, Informations de l'essieu, Achsinformation, Położenie osi, Информация о мосте, روجملا تامول عجرم

**Bearing Position** (EN, ES, PT, FR, DE, PL, RU, AR): Posición del Rodamiento, Posição do Rolamento, Posición del Rodamiento, Lagerposition, Położenie łożyska, Позиция подшипника, لوجملا عضولم

POSITION	Fersa	OEM
<b>MERCEDES BENZ</b> <sup>2°</sup>		
<b>ATEG</b> <sup>3°</sup>	<i>814, 814 L, 814 <sup>4°</sup> 5 L, 817, 817 L</i>	
FA	SA 504304 01	<b>32306 F</b> / <b>33208 F</b>
VL 2/22 DC-1 <sup>5°</sup>	SA 504304 01, SA 504304 30	<b>33 <sup>8°</sup></b> / <b>39590/39520</b>
FA <sup>6°</sup>	SA 504304 <sup>7°</sup>	<b>F 15120</b>
FA	SA 504304 87	<b>33017 F</b> / <b>33208 F</b>
HL 4/40 DC-7	RA	<b>33017 F</b> / <b>33208 F</b>
<b>ATEGO</b>	<i>Construction <sup>EN</sup> / <sup>ES</sup> Construcción / <sup>PT</sup> Construção / <sup>FR</sup> Construction / <sup>DE</sup> Konstruktion / <sup>PL</sup> Budowa / <sup>RU</sup> Конструкция / <sup>AR</sup> لوجملا</i>	
VL 2/21 DC-3,5	SA 504304 01	<b>815 F</b> / <b>580/39520</b>
VL 2/21 DC-3,5	SA 504304 01, SA 504304 30	<b>663/653</b>
VL 2/21 DC-3,5	SA 504304 30	<b>663/653</b>

	EN	ES	PT	FR
	Differential	Diferencial	Diferencial	Differentiel
	Gearbox	Caja de cambios	Caixa de câmbio	Boîte de vitesses
	Wheel end	Rueda	Roda	Roue
	Trailer	Trailer	Reboque	Remorque
	Truck	Camión	Caminhão	Camion
	Bus	Bus	Ônibus	Bus
	OEM cross references	OEM cruce de referencias	OEM Referências cruzadas	Références OEM croisées
*	Availability to be advised	Se confirmará disponibilidad	Disponibilidade a confirmar	Disponibilité à notifier
	Axle position	Posición del eje	Posição do eixo	Position de l'essieu
	Information	Información	Informação	Informations
	WHU (Wheel Hub Unit)	WHU (Unidad de buje de rueda)	WHU (Cubo de roda unitizado)	WHU (unité de roulement de roue)
	Inboard	Interior	Interior	Embarqué
	Outboard	Exterior	Exterior	Débarqué

<b>Z</b>	Shield on one side	Tapa en una cara	Protetor em uma face	Écran sur un côté
<b>ZZ</b>	Shield on both sides	Tapas en las dos caras	Protetor nas duas faces	Écrans sur les deux côtés
<b>RS</b>	Rubbing seal on one side	Tapa retén en una cara	Protetor nas duas faces	Joint à frottement sur un côté
<b>2RS</b>	Rubbing seals on both sides	Tapa retén en las dos caras	Retentor nas duas faces	Joints à frottement sur les deux côtés
<b>M</b>	Machined brass cage	Jaula de latón	Gaiola de latão	Cage en laiton usinée
<b>N</b>	Snap ring groove in outer ring	Ranura y anillo elástico en aro exterior	Canal e trava no aro externo	Rainure pour segment d'arrêt sur la bague extérieure
<b>NR</b>	Snap ring groove and snap ring in outer ring	Ranura, anillo elástico y arandela de seguridad en aro exterior	Canal com trava de segurança no aro exterior	Rainure pour segment d'arrêt et segment d'arrêt sur la bague extérieure
<b>C3</b>	Internal clearance greater than normal	Juego radial mayor que el normal	Folga radial maior que o normal	Jeu interne supérieur à la normale

<b>FA</b>	Front axle	Eje delantero	Eixo traseiro	Essieux avant
<b>LA</b>	Leading axle	Eje motriz	Eixo motriz	Essieu poussé
<b>RA</b>	Rear axle	Eje trasero	Eixo dianteiro	Essieu arrière
<b>TA</b>	Trailing axle	Eje de arrastre	Eixo de arraste	Essieu traîné
<b>TRA</b>	Trailer axle	Eje de trailer	Eixo de reboque	Essieu de remorque

	DE	PL	RU	AR
	Differential	Mechanizm różnicowy	Дифференциал	قرص تقاطعي
	Getriebe	Skrzynia biegów	Коробка передач	علبة التروس
	Rad	Koło	Колесо	عجلة
	Anhänger	Przyczepa	Прицеп	مقطورة
	LKW	Ciężarówka	Грузовик	شاحنة
	Bus	Autobus	Автобус	حافلة
	OEM-Quervergleiche	Oдноśniki OEM	Перевод на маркировку производителя	مراجع متبادلة لمصنع المعدات الأصلية
*	Verfügbarkeit muss bestätigt werden	Informacje dotyczące dostępności poda producent	Наличие уточняется	الإتاحة للاستشارة
	Achspannung	Położenie osi	Позиция моста	موضع المحور
	Information	Informacje	Информация	المعلومات
	WHU (Radnabeneinheit)	WHU (zestaw piast koła)	Ступица	وحد محول العجلة (WHU)
	Innen	Wewnętrzny	Внутри	داخلي
	Außen	Zewnętrzny	Снаружи	خارجي

<b>Z</b>	Deckel auf einer Seite	Ośłona z jednej strony	Защитная шайба с одной стороны	درع في جانب واحد
<b>ZZ</b>	Deckel auf beiden Seiten	Ośłony po obu stronach	Защитные шайбы с обеих сторон	درعان على كلا الجانبين
<b>RS</b>	Schleifende Dichtung auf einer Seite	Uszczelnienie cierne po jednej stronie	Резиновое уплотнение с одной стороны	مانع تسريب احتكاك على جانب واحد
<b>2RS</b>	Schleifende Dichtungen auf beidem Seiten	Uszczelnienia cierne po obu stronach	Резиновое уплотнение с обеих сторон	مانعي تسريب احتكاك على كلا الجانبين
<b>M</b>	Messingkäfig	Rowek na pierścieniu zewnętrznym	Механически обработанный латунный сепаратор	قفص نحاس الي
<b>N</b>	Sprengringnut im Außenring	Rowek smarowy na pierścieniu zewnętrznym	Канавка под стопорное кольцо на наружном кольце	محاذاة تجويف حلقة الإطباق في الحلقة الخارجية
<b>NR</b>	Sprengringnut und Sprengring im Außenring	Rowek i zabezpieczający pierścień sprężynujący na pierścieniu zewnętrznym	Канавка со стопорным кольцом на наружном кольце	محاذاة حلقة الإطباق وحلقة الإطباق في الحلقة الخارجية
<b>C3</b>	Radialspiel größer als normal	Luz wewnętrzny większy niż normalny	Внутренний зазор, превышающий стандартный	الخلوص الداخلي أكبر من المعدل الطبيعي

<b>FA</b>	Vorderachse	Oś przednia	Передний мост	المحور الأمامي
<b>LA</b>	Vorlaufachse	Oś prowadząca	Ведущий мост	محور القيادة الأمامي
<b>RA</b>	Hinterachse	Oś tylna	Задний мост	المحور الخلفي
<b>TA</b>	Hinterachse	Oś tylna	Поддерживающий мост	محور السحب الخلفي
<b>TRA</b>	Anhängerschaft	Oś przyczepy	Мост прицепа	محور المقطورة

	ES	PT	FR
Bevel pinion	Piñón	Pinhão	Pignon conique
Bevel pinion front	Piñón delantero	Pinhão dianteiro	Pignon conique avant
Bevel pinion pilot	Piñón piloto	Pinhão ponta	Pilote du pignon conique
Bevel pinion rear	Piñón trasero	Pinhão traseiro	Pignon conique arrière
Differential left	Diferencial izquierda	Coroa lateral esquerda	Différentiel gauche
Differential right	Diferencial derecha	Coroa lateral direito	Différentiel droit
Input shaft front	Eje de entrada delantero	Eixo de entrada dianteiro	Arbre d'entrée avant
Input shaft rear	Eje de entrada trasero	Eixo de entrada traseiro	Arbre d'entrée arrière
Inter-axle differential	Diferencial entre ejes	Diferencial entre eixos	Différentiel inter-essieux
Intermediate gear front	Engranaje intermedio delantero	Engrenagem intermediária dianteiro	Engrenage intermédiaire avant
Intermediate gear rear	Engranaje intermedio trasero	Engrenagem intermediária traseiro	Engrenage intermédiaire arrière
Output shaft front	Eje de salida delantero	Eixo de saída dianteiro	Arbre de sortie avant
Output shaft intermediate	Eje de salida intermedio	Eixo de saída intermediário	Arbre de sortie intermédiaire
Output shaft rear	Eje de salida trasero	Eixo de saída traseiro	Arbre de sortie arrière
Reduction shaft left	Eje de reducción izquierda	Eixo de redução esquerda	Arbre de réduction gauche
Reduction shaft right	Eje de reducción derecha	Eixo de redução direito	Arbre de réduction droit

	ES	PT	FR
Auxiliary counter shaft	Eje secundario auxiliar	Carretel auxiliar	Arbre secondaire auxiliaire
Auxiliary counter shaft front	Eje secundario auxiliar delantero	Carretel auxiliar dianteiro	Arbre secondaire auxiliaire avant
Auxiliary counter shaft rear	Eje secundario auxiliar trasero	Carretel auxiliar traseiro	Arbre secondaire auxiliaire arrière
Case housing	Tapa de carcasa	Tampa de carcaça	Boîtier
Counter shaft	Eje intermedio	Carretel	Arbre secondaire
Counter shaft front	Eje intermedio delantero	Carretel dianteiro	Arbre secondaire avant
Counter shaft intermediate	Eje intermedio intermedio	Carretel intermediário	Arbre secondaire intermédiaire
Counter shaft rear	Eje intermedio trasero	Carretel traseiro	Arbre secondaire arrière
Fork	Horquilla	Fork	Fourche
GPA	GPA	GPA	GPA
GPA front	GPA delantero	GPA dianteiro	GPA avant
GPA intermediate	GPA intermedio	GPA intermediário	GPA intermédiaire
GPA rear	GPA trasero	GPA traseiro	GPA arrière
GV	GV	GV	GV
GV case	GV carcasa	GV carcaça	GV boîtier
GV front	GV delantero	GV dianteiro	GV avant
GV intermediate	GV intermedio	GV intermediário	GV intermédiaire
GV rear	GV trasero	GV traseiro	GV arrière
Input shaft	Eje de entrada	Eixo primário	Arbre d'entrée
Input shaft case	Eje de entrada carcasa	Eixo primário carcaça	Boîtier de l'arbre d'entrée

	ES	PT	FR
Input shaft front	Eje de entrada delantero	Eixo primário dianteiro	Arbre d'entrée avant
Input shaft intermediate	Eje de entrada intermedio	Eixo primário intermediário	Arbre d'entrée intermédiaire
Input shaft rear	Eje principal	Eixo primário traseiro	Arbre d'entrée arrière
Main shaft	Eje principal delantero	Eixo primário	Arbre principal
Main shaft front	Eje principal intermedio	Eixo secundário dianteiro	Arbre principal avant
Main shaft intermediate	Eje principal trasero	Eixo secundário intermediário	Arbre principal intermédiaire
Main shaft rear	MPS kit	Eixo secundário traseiro	Arbre principal arrière
MPS kit	Bomba de aceite	MPS kit	Kit MPS
Oil pump	Eje de salida	Bomba de óleo	Pompe à huile
Output shaft	Eje de salida delantero	Eixo planetario	Arbre de sortie
Output shaft front	Eje de salida trasero	Eixo planetario dianteiro	Arbre de sortie avant
Output shaft rear	Toma de fuerza	Eixo planetario traseiro	Arbre de sortie arrière
PTO	Corona reductora	Tomada de força	PTO
Reduction	Retarder delantero	Redução	Réduction
Retarder shaft front	Retarder trasero	Retarder dianteiro	Arbre de ralentisseur avant
Retarder shaft rear	Retarder	Retarder traseiro	Arbre de ralentisseur arrière
Retarder shaft	Alojamiento retarder delantero	Retarder	Arbre de ralentisseur
Retarder housing front	Alojamiento retarder trasero	Alojamento retarder dianteiro	Boîtier du ralentisseur avant
Retarder housing rear	Marcha atrás	Alojamento retarder traseiro	Boîtier du ralentisseur arrière
Reverse shaft	Marcha atrás delantero	Ré inferior	Arbre d'inversion
Reverse shaft front	Marcha atrás intermedio	Ré inferior dianteiro	Arbre d'inversion avant
Reverse shaft intermediate	Marcha atrás trasero	Ré inferior intermediário	Arbre d'inversion intermédiaire
Reverse shaft rear	Segundo eje secundario auxiliar	Ré inferior traseiro	Arbre d'inversion arrière
Second auxiliary counter shaft	Segundo eje secundario auxiliar delantero	Segundo carretel auxiliar	Deuxième arbre secondaire auxiliaire
Second auxiliary counter shaft front	Segundo eje secundario auxiliar trasero	Segundo carretel auxiliar dianteiro	Deuxième arbre secondaire auxiliaire avant
Second auxiliary counter shaft rear	Mecanismo selector	Segundo carretel auxiliar traseiro	Deuxième arbre secondaire auxiliaire arrière
Selector mechanism	Splitter	Mecanismo seletor	Mécanisme sélecteur
Splitter	Splitter delantero	Splitter	Séparateur
Splitter front	Splitter intermedio	Splitter dianteiro	Séparateur avant
Splitter intermediate	Splitter trasero	Splitter intermedio	Séparateur intermédiaire
Splitter rear	Splitter traseiro	Splitter traseiro	Séparateur arrière

	ES	PT	FR
Inboard	Interno	Interno	Embarqué
Outboard	Externo	Externo	Embarqué

	DE	PL	RU	AR
Bevel pinion	Konisches Ritzel	Stożkowe koło zębate	Зубчатая коническая передача	ترس صغير مخروطي
Bevel pinion front	Konisches Ritzel vorn	Stożkowe koło zębate, przednie	Зубчатая коническая передача спереди	الجانب الأمامي للترس الصغير المخروطي
Bevel pinion pilot	Konisches Ritzel Führung	Prowadnik stożkowego koła zębatego	Цапфа зубчатой конической передачи	دليل الترس الصغير المخروطي
Bevel pinion rear	Konisches Ritzel hinten	Stożkowe koło zębate, tylne	Зубчатая коническая передача сзади	الجانب الخلفي للترس الصغير المخروطي
Differential left	Differential links	Mechanizm różnicowy, lewy	Дифференциал слева	الجانب الأيسر للقرص التفاضلي
Differential right	Differential rechts	Mechanizm różnicowy, prawy	Дифференциал справа	الجانب الأيمن للقرص التفاضلي
Input shaft front	Eingangswelle vorn	Wał wejściowy, przedni	Входной вал спереди	الجانب الأمامي للعمود الداخلي
Input shaft rear	Eingangswelle hinten	Wał wejściowy, tylny	Входной вал сзади	الجانب الخلفي للعمود الداخلي
Inter-axle differential	Längsdifferential	Mechanizm różnicowy centralny	Промежуточный дифференциал	القرص التفاضلي داخل المحور
Intermediate gear front	Mittlerer Gang vorn	Koło zębate pośredniczące, przednie	Промежуточная шестерня спереди	الجانب الأمامي لعنبة التروس الوسطى
Intermediate gear rear	Mittlerer Gang hinten	Koło zębate pośredniczące, tylne	Промежуточная шестерня сзади	الجانب الخلفي لعنبة التروس الوسطى
Output shaft front	Ausgangswelle vorn	Wał wyjściowy, przedni	Выходной вал спереди	الجانب الأمامي للعمود الخارجي
Output shaft intermediate	Ausgangswelle Mitte	Wał wyjściowy, centralny	Выходной вал посередине	الجانب الأوسط للعمود الخارجي
Output shaft rear	Ausgangswelle hinten	Wał wyjściowy, tylny	Выходной вал сзади	الجانب الخلفي للعمود الخارجي
Reduction shaft left	Zwischenwelle links	Wał redukcyjny, lewy	Вал редуктора слева	الجانب الأيسر لعمود الخفض
Reduction shaft right	Zwischenwelle rechts	Wał redukcyjny, prawy	Вал редуктора справа	الجانب الأيمن لعمود الاختزال

	DE	PL	RU	AR
Auxiliary counter shaft	Hilfs-Zapfwelle	Dodatkowy wał pośredni	Вспомогательный обратный вал	عمود العداد المساعد
Auxiliary counter shaft front	Hilfs-Zapfwelle vorn	Dodatkowy wał pośredni, przedni	Вспомогательный обратный вал спереди	الجانب الأيمن لعمود العداد المساعد
Auxiliary counter shaft rear	Hilfs-Zapfwelle hinten	Dodatkowy wał pośredni, tylny	Вспомогательный обратный вал сзади	الجانب الخلفي لعمود العداد المساعد
Case housing	Gehäusedeckel	Obudowa	Картер	مبيت الحافظة
Counter shaft	Zapfwelle	Wał pośredni	Обратный вал	عمود العداد
Counter shaft front	Zapfwelle vorn	Wał pośredni, przedni	Обратный вал спереди	الجانب الأيمن لعمود العداد
Counter shaft intermediate	Zapfwelle Mitte	Wał pośredni, centralny	Обратный вал посерединه	الجانب الأوسط لعمود العداد
Counter shaft rear	Zapfwelle hinten	Wał pośredni, tylny	Обратный вал сзади	الجانب الخلفي لعمود العداد
Fork	Gabel	Widelki	Вилка	الشوكة
GPA	GPA	GPA	GPA	GPA
GPA front	GPA vorn	GPA, przód	GPA спереди	الجانب الأمامي لـGPA
GPA intermediate	GPA Mitte	GPA, położenie centralne	GPA посерединه	الجانب الأوسط لـGPA
GPA rear	GPA hinten	GPA, tył	GPA сзади	الجانب الخلفي لـGPA
GV	GV	GV	GV	GV
GV case	GV Gehäuse	GV, obudowa	Картер GV	حافظة GV
GV front	GV vorn	GV, przód	GV спереди	الجانب الأمامي لـGV
GV intermediate	GPA Mitte	GV, położenie centralne	GV посерединه	الجانب الأوسط لـGV
GV rear	GV hinten	GV, tył	GV сзади	الجانب الخلفي لـGV

	DE	PL	RU	AR
Input shaft	Eingangswelle	Wał wejściowy	Входной вал	العمود الداخلي
Input shaft case	Eingangswelle Gehäuse	Obudowa wału wejściowego	Картер входного вала	حافظة العمود الداخلي
Input shaft front	Eingangswelle vorn	Wał wejściowy, przedni	Входной вал спереди	الجانب الأمامي للعمود الداخلي
Input shaft intermediate	Eingangswelle Mitte	Wał wejściowy, centralny	Входной вал посерединه	الجانب الأوسط للعمود الداخلي
Input shaft rear	Hauptwelle	Wał wejściowy, tylny	Входной вал сзади	الجانب الخلفي للعمود الداخلي
Main shaft	Hauptwelle vorn	Wał główny	Ведущий вал	العمود الرئيسي
Main shaft front	Hauptwelle Mitte	Wał główny, przedni	Ведущий вал спереди	الجانب الأمامي للعمود الرئيسي
Main shaft intermediate	Hauptwelle hinten	Wał główny, centralny	Ведущий вал посерединه	الجانب الأوسط للعمود الرئيسي
Main shaft rear	MPS-Set	Wał główny, tylny	Ведущий вал сзади	الجانب الخلفي للعمود الرئيسي
MPS kit	Ölpumpe	MPS kit	Комплект MPS	طقم أدوات MPS
Oil pump	Ausgangswelle	Pompa olejowa	Масляный насос	مضخة الزيت
Output shaft	Ausgangswelle vorn	Wał wyjściowy	Выходной вал	العمود الخارجي
Output shaft front	Ausgangswelle hinten	Wał wyjściowy, przedni	Выходной вал спереди	الجانب الأمامي للعمود الخارجي
Output shaft rear	Nebenabtrieb	Wał wyjściowy, tylny	Выходной вал сзади	الجانب الخلفي للعمود الخارجي
PTO	Zwischenwelle	Przystawka odbioru mocy	Вал отбора мощности	PTO
Reduction	Retarderwelle vorn	Redukcja	Редуктор	خفض
Retarder shaft front	Retarderwelle hinten	Wał hamulca, przedni	Вал замедлителя спереди	الجانب الأمامي للعمود المقاصر
Retarder shaft rear	Retarderwelle	Wał hamulca, tylny	Вал замедлителя сзади	الجانب الخلفي للعمود المقاصر
Retarder shaft	Retardergehäuse vorn	Wał hamulca	Вал замедлителя	العمود المقاصر
Retarder housing front	Retardergehäuse hinten	Obudowa hamulca, przód	Корпус замедлителя спереди	الجانب الأمامي لمبيت المقاصر
Retarder housing rear	Rücklaufwelle	Obudowa hamulca, tył	Корпус замедлителя сзади	الجانب الخلفي لمبيت المقاصر
Reverse shaft	Rücklaufwelle vorn	Wał wsteczny	Вал заднего хода	العمود العكسي
Reverse shaft front	Rücklaufwelle Mitte	Wał wsteczny, przedni	Вал заднего хода спереди	الجانب الأمامي للعمود العكسي
Reverse shaft intermediate	Rücklaufwelle hinten	Wał wsteczny, centralny	Вал заднего хода посерединه	الجانب الأوسط للعمود العكسي
Reverse shaft rear	Zweite Hilfs-Zapfwelle	Wał wsteczny, tylny	Вал заднего хода сзади	الجانب الخلفي للعمود العكسي
Second auxiliary counter shaft	Zweite Hilfs-Zapfwelle vorn	Drugi dodatkowy wał pośredni	Второй вспомогательный обратный вал	عمود العداد المساعد الثاني
Second auxiliary counter shaft front	Zweite Hilfs-Zapfwelle hinten	Drugi dodatkowy wał pośredni, przedni	Второй вспомогательный обратный вал спереди	الجانب الأمامي لعمود العداد المساعد الثاني
Second auxiliary counter shaft rear	Auswahlmechanismus	Drugi dodatkowy wał pośredni, tylny	Второй вспомогательный обратный вал сзади	الجانب الخلفي لعمود العداد المساعد الثاني
Selector mechanism	Splitter	Mechanizm wybieraka	Механизм переключения	آلية المحدد
Splitter	Splitter vorn	Rozdzielacz	Доп. коробка передач	المقسم
Splitter front	Splitter Mitte	Rozdzielacz, przedni	Доп. коробка передач спереди	الجانب الأمامي للمقسم
Splitter intermediate	Splitter hinten	Rozdzielacz, centralny	Доп. коробка передач посерединه	الجانب الأوسط للمقسم
Splitter rear	Séparateur arrière	Rozdzielacz, tylny	Доп. коробка передач сзади	الجانب الخلفي للمقسم

	DE	PL	RU	AR
Inboard	Innen	Wewnętrzny	Внутри	داخلي
Outboard	Außen	Zewnętrzny	Снаружи	خارجي



## Gearbox

	Pag
4K-121 GP	16
4S-120 GP	16
5K-90 GP	16
5K-90 GPA	17
5K-91 GP	17
5K-91 GPA	18
5K-110 GP	18
5K-110 GPA	18
5K-110 GP+GV90/1	19
5K-110 GPA+GV90/1	19
5S-90 GP	20
5S-90 GPA	20
5S-92 GP	21
5S-110 GP	21
5S-110 GP+GV90/1	22
5S-110 GPA	22
5S-110 GPA+GV90/1	23
5S-111 GP	23
5S-111 GP+GV90/1	23
5S-111 GPA	24
6S-150C	24
6S-850	25
6S-1600	25
8S-109	25
8S-180	26
8S-1350	26
8S-1620 TD/8S-162 TD IT/8S-1621 TD IT	26
8S-1820 TO/8S-182 TO IT/8S-1821 TO IT	27
8S-1823 TO	27
9S-75	27
9S-109	28
9S-1310	28
16K-130	28
16K-160	29
16K-190	30
16S-109	31

	Pag
16S-112	31
16S-112/1	31
16S-130	31
16S-130/1	33
16S-150	34
16S-151	34
16S-160	36
16S-160/1	37
16S-160A	37
16S-160A/1	38
16S-181	39
16S-190	39
16S-190/1	40
16S-190A	40
16S-190A/1	41
16S-220	41
16S-220A	42
16S-221	43
16S-251	44
16S-252 TO IT	44
16S-1300	44
16S-1600	45
16S-1620 TD/16S-1625 TD/16S-162 TD IT/16S-1621 TD IT	45
16S-1820 TO/16S-182 TO IT/16S-1821 TO IT/16S-1822 TO/16S-1825 TO	45
16S-1823 TO	46
16S-1900	46
16S-1920 TD/16S-1921 TD IT/16S-1922 TD	46
16S-1923 TD	47
16S-2220 TO/ TO IT/16S-222 TO IT/16S-2222 TO/16S-2223 TO/16S-2225 TO/16S-2221 TO IT	47
16S-2220 TD/16S-222 TD IT/16S-2222 TD/16S-2225 TD/16S-2221 TD IT	47

	Pag
16S-2223 TD	48
16S-2223 TO	48
16S-2320 TD/16S-232 TD IT	48
16S-2321 TD IT	48
16S-2322 TD/16S-2323 TD/16S-2325 TD	49
16S-2520 TO	49
16S-2522 TO/16S-2523 TO IT/16S-2521 TO IT	49
16S-2525 TO	50
16S-2723 TO/16S-2725 TO/16S-272 TO IT/16S-2721 TO IT	50
AK6-80	50
AK6-80+GV80	51
AK6-90	51
AK6-90+GV90	52
S6-36	53
S6-36+GV36	53
S5-24	53
S5-35/2	54
S5-420	55
S5-680	55
S5-820	55
S6-65	56
S6-66	56
S6-66+GV66	57
S6-80	57
S6-80+GV80	58
S6-85	59
S6-90	59
S6-90+GV90	61
S6-90/1	62
S6-90/1+GV90	63
S6-680	63
S6-1550	64
S680+GV	64



POSITION	Fersa	OEM
<b>4K-120 GP</b>		
Main shaft	*	0501 398 211
Main shaft	*	0750 115 227
Main shaft	*	0735 320 379
Counter shaft front	<b>33889/33822</b>	0750 117 083
Counter shaft rear	<b>33885/33822</b>	1246 203 008
Main shaft front	<b>NUP 311 FMNR/C3</b>	0750 118 015
Main shaft rear	<b>F 19019</b>	0750 118 019
Synchronizer	*	0735 340 080
Case housing	<b>6213 ZMNR/C3</b>	0735 330 136
Input shaft front	<b>F 19022</b>	0750 118 129
Reverse shaft	*	0735 320 493

POSITION	Fersa	OEM
<b>4K-121 GP</b>		
Main shaft	*	0501 398 211
Main shaft	*	0750 115 227
Main shaft	*	0735 320 379
Counter shaft front	<b>33889/33822</b>	0750 117 083
Counter shaft rear	<b>33885/33822</b>	1246 203 008
Main shaft front	<b>NUP 311 FMNR/C3</b>	0750 118 015
Main shaft rear	<b>F 19019</b>	0750 118 019
Synchronizer	*	0735 340 080
Case housing	<b>6213 ZMNR/C3</b>	0735 330 136
Input shaft front	<b>F 19022</b>	0750 118 129
Reverse shaft	*	0735 320 493

POSITION	Fersa	OEM
<b>4S-120 GP</b>		
<i>R.9,16-1,00</i>		
Input shaft case	<b>32209 F</b>	0635 373 021
Input shaft front	*	0750 117 381
Main shaft front	<b>F 19019</b>	0750 118 019
Main shaft	*	0735 320 379
Main shaft	*	0750 115 227
Main shaft	*	0735 320 378
Main shaft	*	0735 320 493
Main shaft rear	<b>NUP 311 FMNR/C3</b>	0750 118 015
Output shaft rear	*	0735 340 080
Counter shaft front	<b>33889/33822</b>	0750 117 083
Counter shaft rear	<b>33885/33822</b>	1246 203 008
Reverse shaft	*	0750 115 011

POSITION	Fersa	OEM
<b>5K-90 GP</b>		
Input shaft front	*	0735 370 033
Main shaft front	<b>F 19019</b>	0750 118 019
Main shaft	*	0735 320 731
Main shaft	*	0735 320 732
Main shaft	*	0750 115 227
Main shaft	*	0735 320 377
Main shaft	*	0735 320 417

POSITION	Fersa	OEM
<b>5K-90 GP</b>		
Main shaft rear	<b>NUP 311 FMNR/C3</b>	0750 118 015
Counter shaft front	<b>33889/33822</b>	0750 117 083
Counter shaft rear	<b>33885/33822</b>	1246 203 008
Reverse shaft	*	0750 115 011
Output shaft front	*	0735 340 080
Output shaft rear	*	0750 116 036
Selector mechanism	*	0635 303 053
Selector mechanism	*	0501 203 518

POSITION	Fersa	OEM
<b>5K-90 GPA</b>		
Input shaft front	*	0750 117 381
Input shaft case	<b>32209 F</b>	0635 373 021
Main shaft front	<b>F 19019</b>	0750 118 019
Main shaft	*	0735 320 731
Main shaft	*	0735 320 732
Main shaft	*	0750 115 227
Main shaft	*	0735 320 377
Main shaft	*	0735 320 417
Main shaft rear	<b>NUP 311 FMNR/C3</b>	0750 118 015
Counter shaft front	<b>33889/33822</b>	0750 117 083
Counter shaft rear	<b>33885/33822</b>	1246 203 008
Reverse shaft	*	0750 115 011
Main shaft rear	*	0635 416 275
Output shaft front	*	0735 340 080
Output shaft rear	*	0750 116 036
GPA front	*	0735 330 025
GPA intermediate	*	0635 416 273
GPA intermediate	*	0635 416 243
GPA rear	*	0735 330 025
GPA	<b>32212 F</b>	0635 373 008
Selector mechanism	*	0635 303 053
Selector mechanism	*	0501 203 518

POSITION	Fersa	OEM
<b>5K-91 GP</b>		
Input shaft front	*	0735 370 033
Main shaft front	<b>F 19019</b>	0750 118 019
Main shaft	*	0735 320 731
Main shaft	*	0735 320 732
Main shaft	*	0750 115 227
Main shaft	*	0735 320 377
Main shaft	*	0735 320 417
Main shaft rear	<b>NUP 311 FMNR/C3</b>	0750 118 015
Counter shaft front	<b>33889/33822</b>	0750 117 083
Counter shaft rear	<b>33885/33822</b>	1246 203 008
Reverse shaft	*	0750 115 011
Output shaft front	*	0735 340 080
Output shaft rear	*	0750 116 036
Selector mechanism	*	0635 303 053
Selector mechanism	*	0501 203 518

POSITION	Fersa	OEM
<b>5K-91 GPA</b>		
Input shaft front	*	0750 117 381
Input shaft case	<b>32209 F</b>	0635 373 021
Main shaft front	<b>F 19019</b>	0750 118 019
Main shaft	*	0735 320 731
Main shaft	*	0735 320 732
Main shaft	*	0750 115 227
Main shaft	*	0735 320 377
Main shaft	*	0735 320 417
Main shaft rear	<b>NUP 311 FMNR/C3</b>	0750 118 015
Counter shaft front	<b>33889/33822</b>	0750 117 083
Counter shaft rear	<b>33885/33822</b>	1246 203 008
Reverse shaft	*	0750 115 011
Main shaft rear	*	0635 416 275
Output shaft front	*	0735 340 080
Output shaft rear	*	0750 116 036
GPA front	*	0735 330 025
GPA intermediate	*	0635 416 273
GPA intermediate	*	0635 416 243
GPA rear	*	0735 330 025
GPA	<b>32212 F</b>	0635 373 008
Selector mechanism	*	0635 303 053
Selector mechanism	*	0501 203 518

<b>5K-110 GP</b>		
Input shaft front	<b>F 19022</b>	0750 118 129
Main shaft front	<b>F 19019</b>	0750 118 019
Main shaft	*	0735 320 396
Main shaft	*	0735 320 493
Main shaft	*	0735 320 371
Main shaft	*	0735 320 371
Main shaft	*	0735 320 371
Main shaft rear	<b>NUP 314 FMNR/C3</b>	0750 118 081
Counter shaft front	<b>F 15047</b>	0750 117 010
Counter shaft rear	<b>F 15047</b>	0750 117 010
Reverse shaft	*	0750 115 011
Output shaft front	*	0635 330 050
Output shaft rear	<b>6314 NR/C3</b>	0635 333 049
Selector mechanism	*	0635 303 053
Selector mechanism	*	0501 203 518

<b>5K-110 GPA</b>		
GV front	<b>30217 F</b>	0750 117 078
GV case	<b>32209 F</b>	0635 373 021
Main shaft front	<b>F 19019</b>	0750 118 019
Main shaft	*	0735 320 396
Main shaft	*	0735 320 493
Main shaft	*	0735 320 371
Main shaft	*	0735 320 371
Main shaft	*	0735 320 371

POSITION	Fersa	OEM
<b>5K-110 GPA</b>		
Main shaft rear	<b>NUP 314 FMNR/C3</b>	0750 118 081
Counter shaft front	<b>F 15047</b>	0750 117 010
Counter shaft rear	<b>F 15047</b>	0750 117 010
Reverse shaft	*	0750 115 011
Main shaft rear	<b>NJ 1024 FM</b>	0635 416 244
Output shaft front	*	0635 330 050
Output shaft rear	<b>6314 NR/C3</b>	0635 333 049
GPA front	*	0735 330 025
GPA intermediate	*	0635 332 132
GPA intermediate	*	0635 416 243
GPA rear	*	0735 330 025
Selector mechanism	*	0635 303 053
Selector mechanism	*	0501 203 518

<b>5K-110 GP+GV90/1</b>		
GV	*	0750 115 089
GV front	<b>F 19022</b>	0750 118 129
Input shaft front	<b>F 19022</b>	0750 118 129
Input shaft	*	0735 358 032
Splitter front	*	1269 298 951
Splitter rear	<b>F 15047</b>	0750 117 010
Main shaft front	<b>F 19019</b>	0750 118 019
Main shaft	*	0735 320 396
Main shaft	*	0735 320 493
Main shaft	*	0735 320 371
Main shaft	*	0735 320 371
Main shaft	*	0735 320 371
Main shaft rear	<b>NUP 314 FMNR/C3</b>	0750 118 081
Counter shaft front	<b>F 15047</b>	0750 117 010
Counter shaft rear	<b>F 15047</b>	0750 117 010
Reverse shaft	*	0750 115 011
Output shaft front	*	0635 330 050
Output shaft rear	<b>6314 NR/C3</b>	0635 333 049
Selector mechanism	*	0635 490 006
Selector mechanism	*	0635 303 053
Selector mechanism	*	0501 203 518

<b>5K-110 GPA+GV90/1</b>		
GV front	<b>30217 F</b>	0750 117 078
GV case	<b>32209 F</b>	0635 373 021
GV	*	0750 115 089
Input shaft front	<b>F 19022</b>	0750 118 129
Input shaft	*	0735 358 032
Splitter front	*	1269 298 951
Splitter rear	<b>F 15047</b>	0750 117 010
Main shaft front	<b>F 19019</b>	0750 118 019
Main shaft	*	0735 320 396
Main shaft	*	0735 320 493

POSITION	Fersa	OEM
<b>5K-110 GPA+GV90/1</b>		
Main shaft	*	0735 320 371
Main shaft	*	0735 320 371
Main shaft	*	0735 320 371
Main shaft rear	<b>NUP 314 FMNR/C3</b>	0750 118 081
Counter shaft front	<b>F 15047</b>	0750 117 010
Counter shaft rear	<b>F 15047</b>	0750 117 010
Reverse shaft	*	0750 115 011
Main shaft rear	<b>NJ 1024 FM</b>	0635 416 244
Output shaft front	*	0635 330 050
Output shaft rear	<b>6314 NR/C3</b>	0635 333 049
GPA	*	1269 298 966
GPA front	*	0735 330 025
GPA intermediate	*	0635 332 132
GPA intermediate	*	0635 416 243
Splitter rear	*	0735 330 025
Selector mechanism	*	0635 303 053
Selector mechanism	*	0501 203 518

<b>5S-90 GP</b>		
Input shaft front	*	0735 370 033
Main shaft front	<b>F 19019</b>	0750 118 019
Main shaft	*	0735 320 731
Main shaft	*	0735 320 732
Main shaft	*	0750 115 227
Main shaft	*	0735 320 377
Main shaft	*	0735 320 417
Main shaft rear	<b>NUP 311 FMNR/C3</b>	0750 118 015
Counter shaft front	<b>33889/33822</b>	0750 117 083
Counter shaft rear	<b>33885/33822</b>	1246 203 008
Reverse shaft	*	0750 115 011
Output shaft front	*	0735 340 080
Output shaft rear	*	0750 116 036
Selector mechanism	*	0635 303 053
Selector mechanism	*	0635 300 086

<b>5S-90 GPA</b>		
Input shaft front	*	0750 117 381
Input shaft case	<b>32209 F</b>	0635 373 021
Main shaft front	<b>F 19019</b>	0750 118 019
Main shaft	*	0735 320 731
Main shaft	*	0735 320 732
Main shaft	*	0750 115 227
Main shaft	*	0735 320 377
Main shaft	*	0735 320 417
Main shaft rear	<b>NUP 311 FMNR/C3</b>	0750 118 015
Counter shaft front	<b>33889/33822</b>	0750 117 083
Counter shaft rear	<b>33885/33822</b>	1246 203 008
Reverse shaft	*	0750 115 011
Main shaft rear	*	0635 416 275

POSITION	Fersa	OEM
<b>5S-90 GPA</b>		
Output shaft front	*	0735 340 080
Output shaft rear	*	0750 116 036
GPA front	*	0735 330 025
GPA intermediate	*	0635 416 273
GPA intermediate	*	0635 416 243
GPA rear	*	0735 330 025
GPA	<b>32212 F</b>	0635 373 008
Selector mechanism	*	0635 303 053
Selector mechanism	*	0635 300 086
Selector mechanism	*	0501 203 518
Selector mechanism	*	0501 203 518

<b>5S-92 GP</b>		
Input shaft front	*	0735 370 033
Main shaft front	<b>F 19019</b>	0750 118 019
Main shaft	*	0735 320 731
Main shaft	*	0735 320 732
Main shaft	*	0750 115 227
Main shaft	*	0735 320 377
Main shaft	*	0735 320 417
Main shaft rear	<b>NUP 311 FMNR/C3</b>	0750 118 015
Counter shaft front	<b>33889/33822</b>	0750 117 083
Counter shaft rear	<b>33885/33822</b>	1246 203 008
Reverse shaft	*	0750 115 011
Output shaft front	*	0735 340 080
Output shaft rear	*	0750 116 036
Selector mechanism	*	0635 303 053
Selector mechanism	*	0635 300 086
Selector mechanism	*	0501 203 518

<b>5S-110 GP</b>		
Input shaft front	<b>F 19022</b>	0750 118 129
Main shaft front	<b>F 19019</b>	0750 118 019
Main shaft	*	0735 320 396
Main shaft	*	0735 320 493
Main shaft	*	0735 320 371
Main shaft	*	0735 320 371
Main shaft	*	0735 320 371
Main shaft rear	<b>NUP 314 FMNR/C3</b>	0750 118 081
Counter shaft front	<b>F 15047</b>	0750 117 010
Counter shaft rear	<b>F 15047</b>	0750 117 010
Reverse shaft	*	0750 115 011
Output shaft front	*	0635 330 050
Output shaft rear	<b>6314 NR/C3</b>	0635 333 049
Selector mechanism	*	0635 303 053
Selector mechanism	*	0501 203 518

POSITION	Fersa	OEM
<b>5S-110 GP+GV90/1</b>		
GV	*	0750 115 089
GV front	<b>F 19022</b>	0750 118 129
Input shaft front	<b>F 19022</b>	0750 118 129
Input shaft	*	0735 358 032
Splitter front	*	1269 298 951
Splitter rear	<b>F 15047</b>	0750 117 010
Main shaft front	<b>F 19019</b>	0750 118 019
Main shaft	*	0735 320 396
Main shaft	*	0735 320 493
Main shaft	*	0735 320 371
Main shaft	*	0735 320 371
Main shaft	*	0735 320 371
Main shaft rear	<b>NUP 314 FMNR/C3</b>	0750 118 081
Counter shaft front	<b>F 15047</b>	0750 117 010
Counter shaft rear	<b>F 15047</b>	0750 117 010
Reverse shaft	*	0750 115 011
Output shaft front	*	0635 330 050
Output shaft rear	<b>6314 NR/C3</b>	0635 333 049
Selector mechanism	*	0635 490 006
Selector mechanism	*	0635 303 053
Selector mechanism	*	0501 203 518

<b>5S-110 GPA</b>		
GV front	<b>30217 F</b>	0750 117 078
GV case	<b>32209 F</b>	0635 373 021
Main shaft front	<b>F 19019</b>	0750 118 019
Main shaft	*	0735 320 396
Main shaft	*	0735 320 493
Main shaft	*	0735 320 371
Main shaft	*	0735 320 371
Main shaft	*	0735 320 371
Main shaft rear	<b>NUP 314 FMNR/C3</b>	0750 118 081
Counter shaft front	<b>F 15047</b>	0750 117 010
Counter shaft rear	<b>F 15047</b>	0750 117 010
Reverse shaft	*	0750 115 011
Main shaft rear	<b>NJ 1024 FM</b>	0635 416 244
Output shaft front	*	0635 330 050
Output shaft rear	<b>6314 NR/C3</b>	0635 333 049
GPA	*	1269 298 966
GPA front	*	0735 330 025
GPA intermediate	*	0635 332 132
GPA intermediate	*	0635 416 243
GPA rear	*	0735 330 025
Selector mechanism	*	0635 303 053
Selector mechanism	*	0501 203 518

POSITION	Fersa	OEM
<b>5S-110 GPA+GV90/1</b>		
GV front	<b>30217 F</b>	0750 117 078
GV case	<b>32209 F</b>	0635 373 021
GV	*	0750 115 089
Input shaft front	<b>F 19022</b>	0750 118 129
Input shaft	*	0735 358 032
Splitter front	*	1269 298 951
Splitter rear	<b>F 15047</b>	0750 117 010
Main shaft front	<b>F 19019</b>	0750 118 019
Main shaft	*	0735 320 396
Main shaft	*	0735 320 493
Main shaft	*	0735 320 371
Main shaft	*	0735 320 371
Main shaft	*	0735 320 371
Main shaft rear	<b>NUP 314 FMNR/C3</b>	0750 118 081
Counter shaft front	<b>F 15047</b>	0750 117 010
Counter shaft rear	<b>F 15047</b>	0750 117 010
Reverse shaft	*	0750 115 011
Main shaft rear	<b>NJ 1024 FM</b>	0635 416 244
Output shaft front	*	0635 330 050
Output shaft rear	<b>6314 NR/C3</b>	0635 333 049
GPA	*	1269 298 966
GPA front	*	0735 330 025
GPA intermediate	*	0635 332 132
GPA intermediate	*	0635 416 243
Splitter rear	*	0735 330 025
Selector mechanism	*	0635 303 053
Selector mechanism	*	0501 203 518

<b>5S-111 GP</b>		
Input shaft front	<b>F 19022</b>	0750 118 129
Main shaft front	<b>F 19019</b>	0750 118 019
Main shaft	*	0735 320 499
Main shaft	*	0735 320 465
Main shaft	*	0735 320 418
Main shaft	*	0735 320 466
Main shaft	*	0735 320 466
Main shaft rear	<b>NUP 314 FMNR/C3</b>	0750 118 081
Output shaft front	*	0635 330 050
Output shaft rear	<b>6314 NR/C3</b>	0635 333 049
Counter shaft front	<b>F 15047</b>	0750 117 010
Counter shaft rear	<b>F 15047</b>	0750 117 010
Reverse shaft	*	0750 115 011

<b>5S-111 GP+GV90/1</b>		
Input shaft front	<b>F 19022</b>	0750 118 129
GV	*	0750 115 089
GV front	<b>F 19022</b>	0750 118 129
Input shaft	*	0735 358 032
Splitter front	*	1269 298 951

POSITION	Fersa	OEM
<b>5S-111 GP+GV90/1</b>		
Splitter rear	<b>F 15047</b>	0750 117 010
Main shaft front	<b>F 19019</b>	0750 118 019
Main shaft	*	0735 320 499
Main shaft	*	0735 320 465
Main shaft	*	0735 320 418
Main shaft	*	0735 320 466
Main shaft	*	0735 320 466
Main shaft rear	<b>NUP 314 FMNR/C3</b>	0750 118 081
Output shaft front	*	0635 330 050
Output shaft rear	<b>6314 NR/C3</b>	0635 333 049
Counter shaft front	<b>F 15047</b>	0750 117 010
Counter shaft rear	<b>F 15047</b>	0750 117 010
Reverse shaft	*	0750 115 011
Selector mechanism	*	0635 300 086
Selector mechanism	*	0501 203 518
Selector mechanism	*	0635 303 053

<b>5S-111 GPA</b>		
Input shaft front	<b>30217 F</b>	0750 117 078
Input shaft case	<b>32209 F</b>	0635 373 021
Main shaft front	<b>F 19019</b>	0750 118 019
Main shaft	*	0735 320 499
Main shaft	*	0735 320 465
Main shaft	*	0735 320 418
Main shaft	*	0735 320 466
Main shaft	*	0735 320 466
Main shaft rear	<b>NUP 314 FMNR/C3</b>	0750 118 081
Main shaft rear	<b>NJ 1024 FM</b>	0635 416 244
Output shaft front	*	0635 330 050
Output shaft rear	<b>6314 NR/C3</b>	0635 333 049
Counter shaft front	<b>F 15047</b>	0750 117 010
Counter shaft rear	<b>F 15047</b>	0750 117 010
Reverse shaft	*	0750 115 011
GPA front	*	0735 330 025
GPA intermediate	*	0635 332 132
GPA intermediate	*	0635 416 243
GPA rear	*	0735 330 025
GPA	*	1269 298 966

<b>6S-150C</b>		
Input shaft front	<b>33262 A/33461</b>	0750 117 079
Input shaft front (Only for input shaft 1304 202 182 - 1304 202 186 - 1304 202 247)	*	0735 370 462
Main shaft front	<b>CONE F 15110</b>	0735 371 748
Main shaft	*	0735 321 011
Main shaft	*	0750 115 227
Main shaft	*	0735 320 816
Main shaft	*	0735 320 500
Main shaft	*	0750 115 225

POSITION	Fersa	OEM
<b>6S-150C</b>		
Main shaft rear (New type)	<b>F 15212</b>	0735 371 605
Main shaft rear (Old Type)	*	0750 117 081
Counter shaft front	<b>33208 F</b>	0735 371 749
Counter shaft rear	<b>33889/33822</b>	0750 117 083
Reverse shaft	*	0735 358 192
Output shaft front	*	0735 340 080
Output shaft rear	*	0750 116 048

<b>6S-850</b>		
Input shaft front	<b>F 18054</b>	0735 330 800
Main shaft front	*	0735 358 128
Main shaft	*	0735 321 527
Main shaft	*	0735 321 528
Main shaft	*	0735 321 529
Main shaft	*	0735 321 530
Main shaft	*	0735 321 531
Main shaft rear	<b>6309 2RS</b>	0750 116 373
Counter shaft front	<b>344/332</b>	0735 371 607
Counter shaft rear	<b>2789/2729</b>	0735 370 438
Reverse shaft	*	0635 300 110

<b>6S-1600</b>		
Input shaft front	<b>47490/47420</b>	0750 117 518
Input shaft front (Only for input shaft 1310 302 040)	<b>JM 714249/JM 714210</b>	0750 117 326
Main shaft front	<b>CONE 4395</b>	0750 117 232
Main shaft	*	0735 321 560
Main shaft	*	0735 321 392
Main shaft (Only for input shaft 1310 302 040)	*	0735 321 393
Main shaft	*	0735 321 432
Main shaft	*	0735 321 432
Main shaft	*	0735 321 432
Main shaft	*	0735 321 394
Main shaft rear	<b>47490/47420</b>	0750 117 518
Counter shaft front	<b>33889/33822</b>	0750 117 083
Counter shaft rear	<b>33885/33822</b>	1246 203 008
Reverse shaft	*	0750 115 233

<b>8S-109</b>		
Input shaft front	<b>33262 A/33461</b>	0750 117 079
Main shaft front	<b>CONE F 15213</b>	0735 371 406
Main shaft	*	0750 115 299
Main shaft	*	0750 115 299
Main shaft	*	0735 320 816
Main shaft	*	0735 320 816
Main shaft	*	0750 115 224
Main shaft	*	0750 115 225
Main shaft rear (Old type)	*	0750 117 081

POSITION	Fersa	OEM
<b>8S-109</b>		
Main shaft rear (New type)	<b>F 15212</b>	0735 371 605
Counter shaft front	<b>33208 F</b>	0735 371 749
Counter shaft rear	<b>33889/33822</b>	0750 117 083
Reverse shaft	*	0735 358 192
Output shaft front	*	0735 340 080
Output shaft front (Alternative version having a different planetary group synchronization.)	<b>F 18052</b>	0750 116 165
Output shaft rear	*	0750 116 048
Output shaft rear (Alternative version having a different planetary group synchronization.)	*	0750 116 197

<b>8S-180</b>		
Input shaft front	<b>47490/47420</b>	0750 117 518
Main shaft front	<b>CONE 4395</b>	0750 117 232
Main shaft	*	0750 115 430
Main shaft	*	0735 320 378
Main shaft	*	0750 115 430
Main shaft	*	0750 115 225
Main shaft rear	<b>HM 807046/HM 807010 BT</b>	0735 371 599
Counter shaft front	<b>JF 4049/JF 4010</b>	0735 371 096
Counter shaft rear	<b>33889/33822</b>	0750 117 083
Output shaft front	*	0735 340 080
Output shaft front (Alternative version having a different planetary group synchronization.)	<b>F 18052</b>	0750 116 165
Output shaft rear	*	0750 116 048
Output shaft rear (Alternative version having a different planetary group synchronization.)	*	0750 116 197
Reverse shaft	*	0735 358 192

<b>8S-1350</b>		
Main shaft	*	0501 398 211
Main shaft	*	0735 320 496
Main shaft	*	0735 320 471
Counter shaft front	<b>F 15047</b>	0750 117 883
Counter shaft rear	<b>32310 F</b>	0750 117 008
Main shaft front	<b>F 19009</b>	0735 410 057
Main shaft rear	<b>F 19075</b>	0750 118 010
	*	0750 116 166
Case housing	<b>6218 C3</b>	0750 116 394
	*	0735 298 125
Input shaft front	<b>F 19008</b>	0750 118 130
Reverse shaft	*	0750 115 059

<b>8S-1620 TD/8S-162 TD IT/8S-1621 TD IT</b>		
Input shaft front	<b>F 15104</b>	0750 117 732
Main Shaft	<b>CONE 4395</b>	0750 117 232
Main Shaft	<b>F 19087</b>	0750 115 534
Main Shaft	<b>F 17038 K</b>	0735 321 087

POSITION	Fersa	OEM
<b>8S-1620 TD/8S-162 TD IT/8S-1621 TD IT</b>		
Main Shaft	<b>F 17039 K</b>	0750 115 325
Main Shaft	<b>F 17040 K</b>	0750 115 324
Main Shaft rear	<b>F 15246</b>	0750 117 677
Output Shaft Front	*	0735 298 169
Output Shaft Rear	<b>6218 C3</b>	0750 116 394
Reverse Idler	<b>F 17041 K</b>	0750 115 366
Countershaft front	<b>5395/5335</b>	0750 117 009
Countershaft rear	<b>5395/5335</b>	0750 117 009

<b>8S-1820 TO/8S-182 TO IT/8S-1821 TO IT</b>		
Input shaft front	<b>F 15104</b>	0750 117 732
Main Shaft	<b>CONE 4395</b>	0750 117 232
Main Shaft	<b>F 19087</b>	0750 115 534
Main Shaft	<b>F 17038 K</b>	0735 321 087
Main Shaft	<b>F 17039 K</b>	0750 115 325
Main Shaft	<b>F 17040 K</b>	0750 115 324
Main Shaft rear	<b>F 15246</b>	0750 117 677
Output Shaft Front	*	0735 298 169
Output Shaft Rear	<b>6218 C3</b>	0750 116 394
Countershaft front	<b>5395/5335</b>	0750 117 009
Countershaft rear	<b>5395/5335</b>	0750 117 009
Reverse Idler	<b>F 17041 K</b>	0750 115 366

<b>8S-1823 TO</b>		
Input shaft front	<b>F 15104</b>	0750 117 773
Main Shaft front	*	0735 368 084
Main Shaft front	*	0735 455 298
Main Shaft	<b>F 19087</b>	0750 115 534
Main Shaft	<b>F 17038 K</b>	0735 321 087
Main Shaft	<b>F 17039 K</b>	0750 115 325
Main Shaft	<b>F 17040 K</b>	0750 115 324
Main Shaft rear	<b>F 15246</b>	0750 117 677
Output Shaft Front	*	0735 298 169
Output Shaft Rear	<b>6218 C3</b>	0750 116 394
Countershaft front	<b>5395/5335</b>	0750 117 009
Countershaft rear	<b>5395/5335</b>	0750 117 009
Reverse Idler	<b>F 17041 K</b>	0750 115 366

<b>9S-75</b>		
Input shaft front	<b>45285 A/45221</b>	0750 117 312
Main shaft front	<b>2580/2520</b>	1307 203 019
Main shaft	*	0735 321 494
Main shaft	*	0735 321 494
Main shaft	*	0735 321 012
Main shaft	*	0750 115 427
Main shaft	*	0750 115 533
Main shaft rear	<b>33885/33822</b>	1246 203 008
Counter shaft front	<b>3386/3325</b>	0735 370 742
Counter shaft rear	<b>2789/2729</b>	0750 117 198

POSITION	Fersa	OEM
<b>9S-75</b>		
Reverse shaft	*	0735 358 192
Output shaft front	*	0635 338 090
Output shaft rear	<b>6213 C3</b>	0735 330 597

POSITION	Fersa	OEM
<b>9S-109</b>		
Input shaft front	<b>33262 A/33461</b>	0750 117 079
Main shaft front	<b>CONE F 15110</b>	0735 371 748
Main shaft	*	0735 321 011
Main shaft	*	0750 115 227
Main shaft	*	0735 320 816
Main shaft	*	0735 320 500
Main shaft	*	0750 115 225
Main shaft rear (New type)	<b>F 15212</b>	0735 371 605
Main shaft rear (Old Type)	*	0750 117 081
Counter shaft front	<b>33208 F</b>	0735 371 749
Counter shaft rear	<b>33889/33822</b>	0750 117 083
Reverse shaft	*	0735 358 192
Output shaft front	*	0735 340 080
Output shaft front (Alternative version having a different planetary group synchronization)	<b>F 18052</b>	0750 116 165
Output shaft rear	*	0750 116 048
Output shaft rear (Alternative version having a different planetary group synchronization)	*	0750 116 197

POSITION	Fersa	OEM
<b>9S-1310</b>		
Input shaft front	<b>47490/47420</b>	0750 117 518
Main Shaft front	<b>CONE 4395</b>	0750 117 232
Main shaft	*	0750 115 972
Main shaft	*	0750 115 973
Main shaft	*	0750 115 971
Main shaft	*	0750 115 970
Main shaft	*	0750 115 969
Main Shaft rear	<b>HM 807046/HM 807010 BT</b>	0750 117 844
Output shaft rear	<b>6216 C3</b>	0750 116 404
Output shaft front	*	0735 330 804
Countershaft rear	<b>33889/33822</b>	0750 117 083
Contershaft front	<b>JF 4049/JF 4010</b>	0750 117 881

POSITION	Fersa	OEM
<b>16K-130</b>		
<i>R.11,46-0,85 + R.13,68-1,00</i>		
Input shaft front	<b>F 19008</b>	0750 118 131
Input shaft front (With input shaft 1295 202 036)	*	0750 117 431
Input shaft	*	0735 320 786
Main shaft front	<b>F 19075</b>	0750 118 010
Main shaft intermediate	*	0750 118 017
Main shaft	*	0735 320 460
Main shaft	*	0735 320 461
Main shaft	*	0750 115 059
Main shaft rear	<b>F 19009</b>	0750 118 153

POSITION	Fersa	OEM
<b>16K-130</b>		
<i>R.11,46-0,85 + R.13,68-1,00</i>		
Counter shaft front	<b>F 15047</b>	0750 117 010
Counter shaft rear	<b>4580/4535</b>	0750 117 011
Reverse shaft	*	0750 115 011
Output shaft front	*	0750 116 166
Output shaft rear	<b>6218 C3</b>	0750 116 002

POSITION	Fersa	OEM
<b>16K-130</b>		
<i>R.14,29-0,82</i>		
Input shaft front	<b>F 19008</b>	0750 118 131
Input shaft front (With input shaft 1295 202 036)	*	0750 117 431
Input shaft	*	0735 320 786
Main shaft front	<b>F 19075</b>	0750 118 010
Main shaft intermediate	*	0750 118 017
Main shaft	*	0735 320 460
Main shaft	*	0735 320 461
Main shaft	*	0750 115 059
Main shaft rear	*	0750 118 137
Counter shaft front	<b>F 15047</b>	0750 117 010
Counter shaft rear	<b>4580/4535</b>	0750 117 011
Reverse shaft	*	0750 115 011
Output shaft front	*	0750 116 166
Output shaft rear	<b>6218 C3</b>	0750 116 002

POSITION	Fersa	OEM
<b>16K-160</b>		
<i>R.11,46-0,85 + R.13,68-1,00</i>		
Input shaft front	<b>F 19008</b>	0750 118 131
Input shaft	*	0735 320 896
Main shaft front	<b>F 19037</b>	0750 118 038
Main shaft intermediate	<b>F 19016</b>	0750 118 005
Main shaft	*	0735 320 418
Main shaft	*	0735 320 568
Main shaft	*	0735 320 486
Main shaft rear	<b>F 19009</b>	0750 118 153
Counter shaft front	<b>F 15047</b>	0750 117 010
Counter shaft rear	<b>32310 F</b>	0750 117 008
Reverse shaft	*	0750 115 011
Output shaft front	<b>F 18052</b>	0750 116 165
Output shaft rear	<b>6218 C3</b>	0750 116 002

POSITION	Fersa	OEM
<b>16K-160</b>		
<i>R.14,29-0,82</i>		
Input shaft front	<b>F 19008</b>	0750 118 131
Input shaft	*	0735 320 896
Main shaft front	<b>F 19037</b>	0750 118 038
Main shaft intermediate	<b>F 19016</b>	0750 118 005
Main shaft	*	0735 320 418
Main shaft	*	0735 320 568
Main shaft	*	0735 320 486
Main shaft rear	*	0750 118 137
Counter shaft front	<b>F 15047</b>	0750 117 010
Counter shaft rear	<b>32310 F</b>	0750 117 008
Reverse shaft	*	0750 115 011
Output shaft front	<b>F 18052</b>	0750 116 165
Output shaft rear	<b>6218 C3</b>	0750 116 002



POSITION	Fersa	OEM
<b>16K-190</b> <i>R.11,46-0,85 + R.13,68-1,00</i>		
Input shaft front	<b>F 19008</b>	0750 118 131
Input shaft	*	0735 320 896
Main shaft front	<b>F 19037</b>	0750 118 038
Main shaft intermediate	<b>F 19016</b>	0750 118 005
Main shaft	*	0735 320 418
Main shaft	*	0735 320 568
Main shaft	*	0735 320 486
Main shaft rear	<b>F 19009</b>	0750 118 153
Counter shaft front	<b>F 15047</b>	0750 117 010
Counter shaft rear	<b>32310 F</b>	0750 117 008
Reverse shaft	*	0750 115 011
Output shaft front	<b>F 18052</b>	0750 116 165
Output shaft rear	<b>6218 C3</b>	0750 116 002

POSITION	Fersa	OEM
<b>16K-190</b> <i>R.14,29-0,82</i>		
Input shaft front	<b>F 19008</b>	0750 118 131
Input shaft	*	0735 320 896
Main shaft front	<b>F 19037</b>	0750 118 038
Main shaft intermediate	<b>F 19016</b>	0750 118 005
Main shaft	*	0735 320 418
Main shaft	*	0735 320 568
Main shaft	*	0735 320 486
Main shaft rear	*	0750 118 137
Counter shaft front	<b>F 15047</b>	0750 117 010
Counter shaft rear	<b>32310 F</b>	0750 117 008
Reverse shaft	*	0750 115 011
Output shaft front	<b>F 18052</b>	0750 116 165
Output shaft rear	<b>6218 C3</b>	0750 116 002

POSITION	Fersa	OEM
<b>16S-109</b> <i>R.11,26-1,00 + R.11,86-0,85 + R.13,30-1,00 + R.13,31-1,00 + R.13,41-1,00 + R.13,42-1,00 + R.13,53-0,82</i>		
Input shaft front	<b>33262 A/33461</b>	0750 117 079
Input shaft	*	0735 320 816
Main shaft front	<b>CONE F 15213</b>	0735 371 406
Main shaft intermediate	*	0750 115 299
Main shaft	*	0735 320 816
Main shaft	*	0735 320 816
Main shaft	*	0750 115 224
Main shaft	*	0750 115 225
Main shaft rear (New type)	<b>F 15212</b>	0735 371 605
Main shaft rear (Old Type)	*	0750 117 081
Output shaft front	*	0735 330 804
Output shaft front	*	0735 340 080
Output shaft front (Alternative version having a different planetary group synchronization)	<b>F 18052</b>	0750 116 165
Output shaft rear	<b>6216 C3</b>	0750 116 404
Output shaft rear	*	0750 116 048
Output shaft rear (Alternative version having a different planetary group synchronization)	*	0750 116 197

POSITION	Fersa	OEM
<b>16S-109</b> <i>R.11,26-1,00 + R.11,86-0,85 + R.13,30-1,00 + R.13,31-1,00 + R.13,41-1,00 + R.13,42-1,00 + R.13,53-0,82</i>		
Counter shaft front	<b>33208 F</b>	0735 371 749
Counter shaft rear	<b>33889/33822</b>	0750 118 511
Reverse shaft	*	0735 358 192

POSITION	Fersa	OEM
<b>16S-112</b> <i>R.11,46-0,85 + R.13,68-1,00</i>		
Input shaft front	<b>F 19008</b>	0750 118 131
Input shaft front (Only with R.13,68-1,00. With input shaft 1296 202 004)	*	0750 118 007
Input shaft front (Only with R.13,68-1,00)	*	0750 117 431
Input shaft	*	0735 320 799
Input shaft (Only with R.13,68-1,00. With input shaft 1296 202 004)	*	0735 358 155
Input shaft case (Only with R.13,68-1,00)	<b>32210 F</b>	0750 117 651
Main shaft front	<b>F 19075</b>	0750 118 010
Main shaft intermediate	*	0750 118 012
Main shaft	*	0735 320 460
Main shaft	*	0735 320 549
Main shaft	*	0735 320 548
Main shaft	*	0750 115 059
Main shaft rear	<b>F 19009</b>	0750 118 153
Counter shaft front	<b>F 15047</b>	0750 117 010
Counter shaft rear	<b>4580/4535</b>	0750 117 011
Reverse shaft	*	0750 115 011
Output shaft front	*	0750 116 166
Output shaft rear	<b>6218 C3</b>	0750 116 002

POSITION	Fersa	OEM
<b>16S-112/1</b> <i>R.13,68-1,00</i>		
Input shaft front	<b>F 19008</b>	0750 118 130
Input shaft	*	0735 320 799
Input shaft case	<b>32210 F</b>	0750 117 651
Main shaft front	<b>F 19075</b>	0750 118 010
Main shaft intermediate	*	0750 118 012
Main shaft	*	0735 320 460
Main shaft	*	0735 320 549
Main shaft	*	0735 320 548
Main shaft	*	0750 115 059
Main shaft rear	<b>F 19009</b>	0750 118 153
Counter shaft front	<b>F 15047</b>	0750 117 010
Counter shaft rear	<b>4580/4535</b>	0750 117 011
Reverse shaft	*	0750 115 011
Output shaft front	*	0750 116 166
Output shaft rear	<b>6218 C3</b>	0750 116 002

POSITION	Fersa	OEM
<b>16S-130</b> <i>R.10,14-0,72</i>		
Input shaft case	<b>32210 F</b>	0750 117 651
Input shaft front	<b>F 19008</b>	0750 118 131
Main shaft front	<b>F 19075</b>	0750 118 010
Main shaft intermediate	<b>F 19016</b>	0750 118 005

POSITION	Fersa	OEM
<b>16S-130</b> <i>R.10,14-0,72</i>		
Main shaft	*	0735 320 418
Main shaft	*	0735 320 451
Main shaft	*	0735 320 548
Main shaft	*	0750 115 059
Main shaft rear	<b>F 19009</b>	0750 118 153
Counter shaft front	<b>F 15047</b>	0750 117 010
Counter shaft rear	<b>32310 F</b>	0750 117 008
Output shaft front	*	0750 116 166
Output shaft rear	<b>6218 C3</b>	0750 116 002

POSITION	Fersa	OEM
<b>16S-130</b> <i>R.11,46-0,85</i>		
Input shaft case (With input shaft 1295 202 036)	<b>32210 F</b>	0750 117 651
Input shaft front	<b>F 19008</b>	0750 118 131
Input shaft front (With input shaft 1295 202 036)	*	0750 117 431
Main shaft front	<b>F 19075</b>	0750 118 010
Main shaft intermediate	<b>F 19016</b>	0750 118 005
Main shaft	*	0735 320 418
Main shaft	*	0735 320 418
Main shaft	*	0735 320 496
Main shaft	*	0750 115 059
Main shaft rear	<b>F 19009</b>	0750 118 153
Counter shaft front	<b>F 15047</b>	0750 117 010
Counter shaft rear	<b>32310 F</b>	0750 117 008
Output shaft front	*	0750 116 166
Output shaft rear	<b>6218 C3</b>	0750 116 002

POSITION	Fersa	OEM
<b>16S-130</b> <i>R.13,68-1,00</i>		
Input shaft case (With input shaft 1295 202 036)	<b>32210 F</b>	0750 117 651
Input shaft front	<b>F 19008</b>	0750 118 131
Input shaft front (Old Type)	*	0750 118 007
Input shaft front (With input shaft 1295 202 036)	*	0750 117 431
Main shaft front	<b>F 19075</b>	0750 118 010
Main shaft intermediate	<b>F 19016</b>	0750 118 005
Main shaft	*	0735 320 418
Main shaft	*	0735 320 418
Main shaft	*	0735 320 496
Main shaft	*	0750 115 059
Main shaft rear	<b>F 19009</b>	0750 118 153
Counter shaft front	<b>F 15047</b>	0750 117 010
Counter shaft rear	<b>32310 F</b>	0750 117 008
Output shaft front	*	0750 116 166
Output shaft rear	<b>6218 C3</b>	0750 116 002

POSITION	Fersa	OEM
<b>16S-130</b> <i>R.14,29-0,82</i>		
Input shaft case (With input shaft 1295 202 036)	<b>32210 F</b>	0750 117 651
Input shaft front	<b>F 19008</b>	0750 118 130

POSITION	Fersa	OEM
<b>16S-130</b> <i>R.14,29-0,82</i>		
Input shaft front (With input shaft 1295 202 036)	*	0750 117 431
Main shaft front	<b>F 19075</b>	0750 118 010
Main shaft intermediate	<b>F 19016</b>	0750 118 005
Main shaft	*	0735 320 418
Main shaft	*	0735 320 418
Main shaft	*	0735 320 496
Main shaft	*	0750 115 059
Main shaft rear	*	0750 118 137
Counter shaft front	<b>F 15047</b>	0750 117 010
Counter shaft rear	<b>32310 F</b>	0750 117 008
Output shaft front	<b>F 18052</b>	0750 116 165
Output shaft rear	<b>6218 C3</b>	0750 116 002

POSITION	Fersa	OEM
<b>16S-130/1</b> <i>R.10,14-0,72</i>		
Input shaft front	<b>F 19008</b>	0750 118 131
Input shaft	*	0735 320 786
Main shaft front	<b>F 19075</b>	0750 118 010
Main shaft intermediate	<b>F 19016</b>	0750 118 005
Main shaft	*	0735 320 418
Main shaft	*	0735 320 451
Main shaft	*	0735 320 548
Main shaft	*	0750 115 059
Main shaft rear	<b>F 19009</b>	0750 118 153
Counter shaft front	<b>F 15047</b>	0750 117 010
Counter shaft rear	<b>32310 F</b>	0750 117 008
Reverse shaft	*	0750 115 011
Output shaft front	*	0750 116 166
Output shaft rear	<b>6218 C3</b>	0750 116 002

POSITION	Fersa	OEM
<b>16S-130/1</b> <i>R.11,46-0,85 + R.13,68-1,00</i>		
Input shaft front	<b>F 19008</b>	0750 118 131
Input shaft	*	0735 320 786
Main shaft front	<b>F 19075</b>	0750 118 010
Main shaft intermediate	<b>F 19016</b>	0750 118 005
Main shaft	*	0735 320 418
Main shaft	*	0735 320 418
Main shaft	*	0735 320 496
Main shaft	*	0750 115 059
Main shaft rear	<b>F 19009</b>	0750 118 153
Counter shaft front	<b>F 15047</b>	0750 117 010
Counter shaft rear	<b>32310 F</b>	0750 117 008
Reverse shaft	*	0750 115 011
Output shaft front	*	0750 116 166
Output shaft rear	<b>6218 C3</b>	0750 116 002

POSITION	Fersa	OEM
<b>16S-130/1</b> <i>R.14,29-0,82</i>		
Input shaft front	<b>F 19008</b>	0750 118 131
Input shaft	*	0735 320 786
Main shaft front	<b>F 19075</b>	0750 118 010

POSITION	Fersa	OEM
<b>16S-130/1</b> <span style="float: right;"><i>R.14,29-0,82</i></span>		
Main shaft intermediate	<b>F 19016</b>	0750 118 005
Main shaft	*	0735 320 418
Main shaft	*	0735 320 418
Main shaft	*	0735 320 496
Main shaft	*	0750 115 059
Main shaft rear	*	0750 118 137
Counter shaft front	<b>F 15047</b>	0750 117 010
Counter shaft rear	<b>32310 F</b>	0750 117 008
Reverse shaft	*	0750 115 011
Output shaft front	<b>F 18052</b>	0750 116 165
Output shaft rear	<b>6218 C3</b>	0750 116 002

<b>16S-150</b> <span style="float: right;"><i>R.13,80-0,84</i></span>		
Input shaft	*	0750 117 431
Input shaft	*	0750 115 310
Input shaft case (R.13,80-0,84)	<b>32210 F</b>	0750 117 651
Main shaft front	<b>CONE 4395</b>	0750 117 232
Main shaft	<b>F 19061</b>	0750 118 198
Main shaft	<b>F 17038 K</b>	0735 321 087
Main shaft	<b>F 17039 K</b>	0750 115 325
Main shaft	<b>F 17040 K</b>	0750 115 324
Main shaft rear	<b>F 15246</b>	0750 117 677
Counter shaft front	<b>F 15047</b>	0750 117 010
Counter shaft rear	<b>4580/4535</b>	0750 117 011
Reverse shaft	*	0750 115 011
Output shaft front	<b>F 18052</b>	0750 116 165
Output shaft	<b>6218 C3</b>	0750 116 002

<b>16S-150</b> <span style="float: right;"><i>R.16,47-1,00</i></span>		
Input shaft	*	0750 117 431
Input shaft	*	0750 115 310
Main shaft front	<b>CONE 4395</b>	0750 117 232
Main shaft	<b>F 19061</b>	0750 118 198
Main shaft	<b>F 17038 K</b>	0735 321 087
Main shaft	<b>F 17039 K</b>	0750 115 325
Main shaft	<b>F 17040 K</b>	0750 115 324
Main shaft rear	<b>F 15246</b>	0750 117 677
Counter shaft front	<b>F 15047</b>	0750 117 010
Counter shaft rear	<b>4580/4535</b>	0750 117 011
Reverse shaft	*	0750 115 011
Output shaft front	<b>F 18052</b>	0750 116 165
Output shaft	<b>6218 C3</b>	0750 116 002

<b>16S-151</b> <span style="float: right;"><i>R.13,74-0,84 + R.16,41-1,00</i></span>		
Input shaft front	<b>F 15104</b>	0750 117 732
Main shaft front	<b>CONE 4395</b>	0750 117 232
Main shaft intermediate	<b>F 19087</b>	0750 115 534
Main shaft	<b>F 17038 K</b>	0735 321 087
Main shaft	<b>F 17039 K</b>	0750 115 325

POSITION	Fersa	OEM
<b>16S-151</b> <span style="float: right;"><i>R.13,74-0,84 + R.16,41-1,00</i></span>		
Main shaft	<b>F 17040 K</b>	0750 115 324
Main shaft rear	<b>F 15246</b>	0750 117 677
Output shaft front	*	0735 298 169
Output shaft rear	<b>6218 C3</b>	0750 116 002
Counter shaft front	<b>5395/5335</b>	0750 117 009
Counter shaft rear	<b>4580/4535</b>	0750 117 011
Reverse shaft	<b>F 17041 K</b>	0750 115 366

<b>16S-151</b> <span style="float: right;"><i>R.13,80-0,84 + R.13,86-0,84 + R.16,47-1,00</i></span>		
Input shaft front	<b>F 15104</b>	0750 117 732
Input shaft front (Only for input shaft 1315 202 022 / 1315 202 012 /1316 202 005 - Old versions with Needle B)	*	0750 117 431
Input shaft (Only for input shaft 1315 202 022)	*	0735 321 437
Input shaft (Only for Input S. 1315 202 012 - Old version with Needle B.)	*	0750 115 310
Input shaft intermediate (Only for input shaft 1316 221 017 / 1316 221 018 / 1315 221 002)	*	0635 450 098
Main shaft front	<b>CONE 4395</b>	0750 117 232
Main shaft intermediate (Do not use for Old version with Needle Bearings)	<b>F 19087</b>	0750 115 534
Main shaft	<b>F 17038 K</b>	0735 321 087
Main shaft	<b>F 17038 K</b>	0735 321 087
Main shaft	<b>F 17039 K</b>	0750 115 325
Main shaft	<b>F 17040 K</b>	0750 115 324
Main shaft rear	<b>F 15246</b>	0750 117 677
Output shaft front	<b>F 18052</b>	0750 116 165
Output shaft front	*	0735 298 169
Output shaft rear	<b>6218 C3</b>	0750 116 002
Counter shaft front (For models having front cover with oil pump)	<b>F 15047</b>	0750 117 010
Counter shaft front (For models having front cover without oil pump)	<b>5395/5335</b>	0750 117 009
Counter shaft rear	<b>4580/4535</b>	0750 117 011
Reverse shaft	<b>F 17041 K</b>	0750 115 366
(Only for input shaft 1315 221 002)	*	0635 450 098
Selector mechanism	*	0635 303 053

<b>16S-151</b> <span style="float: right;"><i>R.13,85-0,84 + R.16,53-1,00</i></span>		
Input shaft front	<b>F 15104</b>	0750 117 732
Input shaft front (Only for input shaft 1315 202 022 / 1315 202 012 /1316 202 005 - Old versions with Needle B)	*	0750 117 431
Input shaft (Only for input shaft 1315 202 022)	*	0735 321 437
Input shaft ( Only for Input S. 1315 202 012 - Old version with Needle B.)	*	0750 115 310

POSITION	Fersa	OEM
<b>16S-151</b> <i>R.13,85-0,84 + R.16,53-1,00</i>		
Input shaft intermediate (Only for input shaft 1316 221 017 / 1316 221 018 / 1315 221 002)	*	0635 450 098
Main shaft front	<b>CONE 4395</b>	0750 117 232
Main shaft intermediate	<b>F 19061</b>	0750 118 198
Main shaft	<b>F 17038 K</b>	0735 321 087
Main shaft	<b>F 17038 K</b>	0735 321 087
Main shaft	<b>F 17039 K</b>	0750 115 325
Main shaft	<b>F 17040 K</b>	0750 115 324
Main shaft rear	<b>F 15246</b>	0750 117 677
Output shaft front	<b>F 18052</b>	0750 116 165
Output shaft front	*	0735 298 169
Output shaft rear	<b>6218 C3</b>	0750 116 002
Counter shaft front (For models having front cover with oil pump)	<b>F 15047</b>	0750 117 010
Counter shaft front (For models having front cover without oil pump)	<b>5395/5335</b>	0750 117 009
Counter shaft rear	<b>4580/4535</b>	0750 117 011
Reverse shaft	<b>F 17041 K</b>	0750 115 366

<b>16S-160</b> <i>R.11,46-0,85</i>		
Input shaft front	<b>F 19008</b>	0750 118 130
Input shaft	*	0735 320 896
Main shaft front	<b>F 19037</b>	0750 118 038
Main shaft intermediate	<b>F 19038</b>	0750 118 220
Main shaft	*	0735 320 451
Main shaft	*	0735 320 452
Main shaft	*	0735 320 487
Main shaft	*	0735 320 486
Main shaft rear	<b>F 19010</b>	0750 118 006
Counter shaft front	<b>F 15047</b>	0750 117 010
Counter shaft rear	<b>5395/5335</b>	0750 117 009
Reverse shaft	*	0750 115 011
Output shaft front	<b>F 18052</b>	0750 116 165
Output shaft rear	<b>6218 C3</b>	0750 116 002

<b>16S-160</b> <i>R.13,68-1,00</i>		
Input shaft front	<b>F 19008</b>	0750 118 130
Input shaft front	*	0750 118 007
Input shaft	*	0735 320 896
Input shaft (Special MB version)	*	0735 358 155
Input shaft front	*	0750 117 431
Input shaft case	<b>32210 F</b>	0750 117 651
Main shaft front	<b>F 19037</b>	0750 118 038
Main shaft intermediate	<b>F 19038</b>	0750 118 220
Main shaft	*	0735 320 451
Main shaft	*	0735 320 452
Main shaft	*	0735 320 487
Main shaft	*	0735 320 486
Main shaft rear	<b>F 19010</b>	0750 118 006

POSITION	Fersa	OEM
Counter shaft front	<b>F 15047</b>	0750 117 010
Counter shaft rear	<b>5395/5335</b>	0750 117 009
Reverse shaft	*	0750 115 011
Output shaft front	<b>F 18052</b>	0750 116 165
Output shaft rear	<b>6218 C3</b>	0750 116 002

<b>16S-160</b> <i>R.14,29-0,82 + R.17,06-1,00</i>		
Input shaft front	<b>F 19008</b>	0750 118 130
Input shaft	*	0735 320 896
Input shaft front	*	0750 117 431
Input shaft case	<b>32210 F</b>	0750 117 651
Main shaft front	<b>F 19037</b>	0750 118 038
Main shaft intermediate	<b>F 19038</b>	0750 118 220
Main shaft	*	0735 320 451
Main shaft	*	0735 320 452
Main shaft	*	0735 320 487
Main shaft	*	0735 320 486
Main shaft rear	<b>F 19008</b>	0750 118 180
Counter shaft front	<b>F 15047</b>	0750 117 010
Counter shaft rear	<b>5395/5335</b>	0750 117 009
Reverse shaft	*	0750 115 011
Output shaft front	<b>F 18052</b>	0750 116 165
Output shaft rear	<b>6218 C3</b>	0750 116 002

<b>16S-160/1</b>		
Input shaft front	<b>F 19008</b>	0750 118 131
Input shaft	*	0735 320 896
Input shaft front (short type)	<b>32210 F</b>	0750 117 651
Main shaft front	<b>F 19037</b>	0750 118 038
Main shaft intermediate	<b>F 19038</b>	0750 118 220
Main shaft	*	0735 320 451
Main shaft	*	0735 320 452
Main shaft	*	0735 320 487
Main shaft	*	0735 320 486
Main shaft rear (With main shaft 1297 304 181)	<b>F 19010</b>	0750 118 006
Main shaft rear (With main shaft 1297 304 193)	<b>F 19008</b>	0750 118 180
Counter shaft front	<b>F 15047</b>	0750 117 010
Counter shaft rear	<b>5395/5335</b>	0750 117 009
Reverse shaft	*	0750 115 011
Output shaft front	<b>F 18052</b>	0750 116 165
Output shaft rear	<b>6218 C3</b>	0750 116 002

<b>16S-160A</b> <i>R.11,74-0,87</i>		
Input shaft front	<b>F 19008</b>	0750 118 131
Input shaft	*	0735 320 896
Input shaft case (short type)	<b>32210 F</b>	0750 117 651
Input shaft front (short type)	*	0750 117 431
Input shaft (short type)	*	0735 320 896
Main shaft front	<b>F 19037</b>	0750 118 038

POSITION	Fersa	OEM
<b>16S-160A</b> <span style="float: right;"><i>R.11,74-0,87</i></span>		
Main shaft intermediate	<b>F 19038</b>	0750 118 220
Main shaft	*	0735 320 451
Main shaft	*	0735 320 452
Main shaft	*	0735 320 487
Main shaft	*	0735 320 486
Main shaft intermediate	<b>F 19010</b>	0750 118 006
Counter shaft front	<b>F 15047</b>	0750 117 010
Counter shaft rear	<b>5395/5335</b>	0750 117 009
Reverse shaft	*	0750 115 011
Output shaft front	<b>F 18052</b>	0750 116 165
Output shaft rear	<b>6218 C3</b>	0750 116 002
Main shaft rear	*	0735 410 110

<b>16S-160A</b> <span style="float: right;"><i>R.14,01-1,02 + R.17,47-1,02</i></span>		
Input shaft case (short type)	<b>32210 F</b>	0750 117 651
Input shaft front (short type)	*	0750 117 431
Input shaft (short type)	*	0735 320 896
Main shaft front	<b>F 19037</b>	0750 118 038
Main shaft intermediate	<b>F 19038</b>	0750 118 220
Main shaft	*	0735 320 451
Main shaft	*	0735 320 452
Main shaft	*	0735 320 487
Main shaft	*	0735 320 486
Main shaft intermediate	<b>F 19010</b>	0750 118 006
Counter shaft front	<b>F 15047</b>	0750 117 010
Counter shaft rear	<b>5395/5335</b>	0750 117 009
Reverse shaft	*	0750 115 011
Output shaft front	<b>F 18052</b>	0750 116 165
Output shaft rear	<b>6218 C3</b>	0750 116 002
Main shaft rear	*	0735 410 110

<b>16S-160A/1</b> <span style="float: right;"><i>R.11,74-0,87</i></span>		
Input shaft case	<b>32210 F</b>	0750 117 651
Input shaft front	*	0750 117 431
Input shaft	*	0735 320 896
Main shaft front	<b>F 19037</b>	0750 118 038
Main shaft intermediate	<b>F 19038</b>	0750 118 220
Main shaft	*	0735 320 451
Main shaft	*	0735 320 452
Main shaft	*	0735 320 487
Main shaft	*	0735 320 486
Main shaft rear	<b>F 19010</b>	0750 118 006
Reverse shaft	*	0750 115 011
Counter shaft front	<b>F 15047</b>	0750 117 010
Counter shaft rear	<b>5395/5335</b>	0750 117 009
Main shaft rear	*	0735 410 110
Output shaft front	<b>F 18052</b>	0750 116 165

POSITION	Fersa	OEM
<b>16S-181</b> <span style="float: right;"><i>R.13,80-0,84 + R.16,41-1,00</i></span>		
Input shaft front	<b>F 15104</b>	0750 117 732
Main shaft front	<b>CONE 4395</b>	0750 117 232
Main shaft intermediate	<b>F 19087</b>	0750 115 531
Main shaft	*	0750 115 303
Main shaft	*	0750 115 327
Main shaft	*	0750 115 326
Main shaft rear	<b>F 15191</b>	0750 117 678
Output shaft front	*	0735 298 169
Output shaft rear	<b>6218 C3</b>	0750 116 002
Counter shaft front	<b>5395/5335</b>	0750 117 009
Counter shaft rear	<b>5395/5335</b>	0750 117 009
Reverse shaft	*	0750 115 369

<b>16S-190</b> <span style="float: right;"><i>R.11,46-0,85 + R.13,68-1,00</i></span>		
Input shaft front	<b>F 19008</b>	0750 118 131
Input shaft	*	0735 320 896
Main shaft front	<b>F 19037</b>	0750 118 038
Main shaft intermediate	<b>F 19038</b>	0750 118 220
Main shaft	*	0735 320 451
Main shaft	*	0735 320 452
Main shaft	*	0735 320 486
Main shaft rear	<b>F 19010</b>	0750 118 006
Counter shaft front	<b>F 15047</b>	0750 117 010
Counter shaft rear	<b>5395/5335</b>	0750 117 009
Reverse shaft	*	0750 115 011
Output shaft front	<b>F 18052</b>	0750 116 165
Output shaft rear	<b>6218 C3</b>	0750 116 002
Output shaft front (New Reinforced Style)	*	0635 338 035

<b>16S-190</b> <span style="float: right;"><i>R.14,29-0,82 + R.17,06-1,00</i></span>		
Input shaft front	<b>F 19008</b>	0750 118 131
Input shaft	*	0735 320 896
Main shaft front	<b>F 19037</b>	0750 118 038
Main shaft intermediate	<b>F 19038</b>	0750 118 220
Main shaft	*	0735 320 451
Main shaft	*	0735 320 452
Main shaft	*	0735 320 486
Main shaft rear	<b>F 19008</b>	0750 118 180
Counter shaft front	<b>F 15047</b>	0750 117 010
Counter shaft rear	<b>5395/5335</b>	0750 117 009
Reverse shaft	*	0750 115 011
Output shaft front	<b>F 18052</b>	0750 116 165
Output shaft rear	<b>6218 C3</b>	0750 116 002
Output shaft front (New Reinforced Style)	*	0635 338 035

POSITION	Fersa	OEM
<b>16S-190/1</b> <i>R.11,46-0,85 + R.13,68-1,00</i>		
Input shaft front	<b>F 19008</b>	0750 118 131
Input shaft	*	0735 320 896
Input shaft case (short type)	<b>32210 F</b>	0750 117 651
Input shaft front (short type)	*	0750 117 431
Main shaft front	<b>F 19037</b>	0750 118 038
Main shaft intermediate	<b>F 19038</b>	0750 118 220
Main shaft	*	0735 320 451
Main shaft	*	0735 320 452
Main shaft	*	0735 320 487
Main shaft	*	0735 320 486
Main shaft rear (With main shaft 1297 304 181)	<b>F 19010</b>	0750 118 006
Counter shaft front	<b>F 15047</b>	0750 117 010
Counter shaft rear	<b>5395/5335</b>	0750 117 009
Reverse shaft	*	0750 115 011
Output shaft front	<b>F 18052</b>	0750 116 165
Output shaft front (New Reinforced Style)	*	0635 338 035
Output shaft rear	<b>6218 C3</b>	0750 116 002

POSITION	Fersa	OEM
<b>16S-190/1</b> <i>R.14,29-0,82 + R.17,06-1,00</i>		
Input shaft front	<b>F 19008</b>	0750 118 131
Input shaft	*	0735 320 896
Input shaft case (short type)	<b>32210 F</b>	0750 117 651
Input shaft front (short type)	*	0750 117 431
Main shaft front	<b>F 19037</b>	0750 118 038
Main shaft intermediate	<b>F 19038</b>	0750 118 220
Main shaft	*	0735 320 451
Main shaft	*	0735 320 452
Main shaft	*	0735 320 487
Main shaft	*	0735 320 486
Main shaft rear (With main shaft 1297 304 193)	<b>F 19008</b>	0750 118 180
Counter shaft front	<b>F 15047</b>	0750 117 010
Counter shaft rear	<b>5395/5335</b>	0750 117 009
Reverse shaft	*	0750 115 011
Output shaft front	<b>F 18052</b>	0750 116 165
Output shaft front (New Reinforced Style)	*	0635 338 035
Output shaft rear	<b>6218 C3</b>	0750 116 002

POSITION	Fersa	OEM
<b>16S-190A</b>		
Input shaft front	<b>F 19008</b>	0750 118 131
Input shaft	*	0735 320 896
Input shaft case	<b>32210 F</b>	0750 117 651
Input shaft front (short type)	*	0750 117 431
Input shaft (short type)	*	0735 320 896
Main shaft front	<b>F 19037</b>	0750 118 038
Main shaft intermediate	<b>F 19038</b>	0750 118 220
Main shaft	*	0735 320 451
Main shaft	*	0735 320 452

POSITION	Fersa	OEM
<b>16S-190A</b>		
Main shaft	*	0735 320 487
Main shaft	*	0735 320 486
Main shaft rear	<b>F 19010</b>	0750 118 006
Reverse shaft	*	0750 115 011
Counter shaft front	<b>F 15047</b>	0750 117 010
Counter shaft rear	<b>5395/5335</b>	0750 117 009
Output shaft front	<b>F 18052</b>	0750 116 165
Output shaft rear	<b>6218 C3</b>	0750 116 002

POSITION	Fersa	OEM
<b>16S-190A/1</b>		
Input shaft case	<b>32210 F</b>	0750 117 651
Input shaft front	*	0750 117 431
Input shaft	*	0735 320 896
Main shaft front	<b>F 19037</b>	0750 118 038
Main shaft intermediate	<b>F 19038</b>	0750 118 220
Main shaft	*	0735 320 451
Main shaft	*	0735 320 452
Main shaft	*	0735 320 487
Main shaft	*	0735 320 486
Main shaft rear	<b>F 19010</b>	0750 118 006
Reverse shaft	*	0750 115 011
Counter shaft front	<b>F 15047</b>	0750 117 010
Counter shaft rear	<b>5395/5335</b>	0750 117 009
Main shaft rear	*	0735 410 110
Output shaft front	<b>F 18052</b>	0750 116 165
Output shaft rear	<b>6218 C3</b>	0750 116 002

POSITION	Fersa	OEM
<b>16S-220</b> <i>R.10,14-0,72</i>		
Input shaft front	*	0750 117 431
Input shaft	*	0735 320 950
Main shaft front	<b>CONE 4395</b>	0750 117 232
Main shaft intermediate	<b>F 19062</b>	0750 118 258
Main shaft	*	0735 320 451
Main shaft	*	0750 115 303
Main shaft	*	0750 115 304
Main shaft	*	0735 321 103
Main shaft rear	*	0750 117 233
Counter shaft front	<b>5395/5335</b>	0750 117 009
Counter shaft rear	<b>5395/5335</b>	0750 117 009
Reverse shaft	*	0750 115 255
Output shaft front	*	0635 338 035
Output shaft rear	<b>6218 C3</b>	0750 116 002

POSITION	Fersa	OEM
<b>16S-220</b> <i>R.13,80-0,84 + R.16,47-1,00</i>		
Input shaft front	*	0750 117 431
Input shaft	*	0735 320 950
Input shaft front (short type)	*	0750 117 431
Input shaft case (short type)	<b>45285 A/45221</b>	0750 117 312
Main shaft front	<b>CONE 4395</b>	0750 117 232

POSITION	Fersa	OEM
<b>16S-220</b> <i>R.13,80-0,84 + R.16,47-1,00</i>		
Main shaft intermediate	<b>F 19062</b>	0750 118 258
Main shaft	*	0750 115 303
Main shaft	*	0750 115 303
Main shaft	*	0750 115 327
Main shaft	*	0750 115 326
Main shaft rear	<b>F 15191</b>	0750 117 678
Counter shaft front	<b>5395/5335</b>	0750 117 009
Counter shaft rear	<b>5395/5335</b>	0750 117 009
Reverse shaft	*	0750 115 255
Output shaft front	*	0635 338 035
Output shaft rear	<b>6218 C3</b>	0750 116 002

<b>16S-220A</b> <i>R.14,14-0,86</i>		
Input shaft	*	0750 117 431
Input shaft needle cage	*	0735 320 950
Input shaft case short type (short type)	<b>45285 A/45221</b>	0750 117 312
Input shaft short type (short type)	*	0750 117 431
Input shaft short type needle cage (short type)	*	0735 320 950
Main shaft front	<b>CONE 4395</b>	0750 117 232
Main shaft	<b>F 19062</b>	0750 118 258
Main shaft needle cage	*	0750 115 303
Main shaft needle cage	*	0750 115 327
Main shaft needle cage	*	0750 115 326
Main shaft rear	<b>F 15191</b>	0750 117 678
Counter shaft front	<b>5395/5335</b>	0750 117 009
Counter shaft rear	<b>5395/5335</b>	0750 117 009
Reverse shaft needle cage	*	0750 115 255
Planet carrier	*	0735 410 110
Output shaft front	*	0635 338 035
Output shaft rear	<b>6218 C3</b>	0750 116 002
2nd output shaft	*	0750 118 016
2nd output shaft front	<b>6218 C3</b>	0750 116 002
2nd output shaft rear	<b>32022 XF</b>	0635 370 030

<b>16S-220A</b> <i>R.16,87-1,02</i>		
Input shaft case short type (short type)	<b>45285 A/45221</b>	0750 117 312
Input shaft short type (short type)	*	0750 117 431
Input shaft short type needle cage (short type)	*	0735 320 950
Main shaft front	<b>CONE 4395</b>	0750 117 232
Main shaft	<b>F 19062</b>	0750 118 258
Main shaft needle cage	*	0750 115 303
Main shaft needle cage	*	0750 115 327
Main shaft needle cage	*	0750 115 326
Main shaft rear	<b>F 15191</b>	0750 117 678
Counter shaft front	<b>5395/5335</b>	0750 117 009
Counter shaft rear	<b>5395/5335</b>	0750 117 009
Reverse shaft needle cage	*	0750 115 255
Planet carrier	*	0735 410 110

POSITION	Fersa	OEM
<b>16S-220A</b> <i>R.16,87-1,02</i>		
Output shaft front	*	0635 338 035
Output shaft rear	<b>6218 C3</b>	0750 116 002
2nd output shaft	*	0750 118 016
2nd output shaft front	<b>6218 C3</b>	0750 116 002
2nd output shaft rear	<b>32022 XF</b>	0635 370 030

<b>16S-221</b> <i>R.13,74-0,84 + R.13,80-0,84 + R.16,41-1,00</i>		
Input shaft front	<b>F 15104</b>	0750 117 732
Input shaft intermediate (Only for input shaft 1316 221 017 - 1316 221 018)	*	0635 450 098
Main shaft front	<b>CONE 4395</b>	0750 117 232
Main shaft intermediate	<b>F 19087</b>	0750 115 531
Main shaft	*	0750 115 303
Main shaft	*	0750 115 327
Main shaft	*	0750 115 326
Main shaft rear	<b>F 15191</b>	0750 117 678
Output shaft front	*	0635 338 035
Output shaft front	*	0735 298 169
Output shaft rear	<b>6218 C3</b>	0750 116 002
Counter shaft front	<b>5395/5335</b>	0750 117 009
Counter shaft rear	<b>5395/5335</b>	0750 117 009
Reverse shaft	*	0750 115 369
Selector mechanism	*	0635 303 053

<b>16S-221</b> <i>R.13,85-0,84</i>		
Input shaft front	<b>F 15104</b>	0750 117 732
Input shaft intermediate (Only for input shaft 1316 221 017 - 1316 221 018)	*	0635 450 098
Main shaft front	<b>CONE 4395</b>	0750 117 232
Main shaft intermediate	<b>F 19062</b>	0750 118 258
Main shaft	*	0750 115 303
Main shaft	*	0750 115 327
Main shaft	*	0750 115 326
Main shaft rear	<b>F 15191</b>	0750 117 678
Output shaft front	<b>6218 C3</b>	0750 116 002
Counter shaft front	<b>5395/5335</b>	0750 117 009
Counter shaft rear	<b>5395/5335</b>	0750 117 009
Reverse shaft	*	0750 115 369
Selector mechanism	*	0635 303 053

<b>16S-221</b> <i>R.13,86-0,84 + R.16,47-1,00</i>		
Input shaft front	<b>F 15104</b>	0750 117 732
Input shaft intermediate (Only for input shaft 1316 221 017 - 1316 221 018)	*	0635 450 098
Main shaft front	<b>CONE 4395</b>	0750 117 232
Main shaft intermediate	<b>F 19087</b>	0750 115 531
Main shaft	*	0750 115 303
Main shaft	*	0750 115 327
Main shaft	*	0750 115 326
Main shaft rear	<b>F 15191</b>	0750 117 678

POSITION	Fersa	OEM
<b>16S-221</b> <i>R.13,86-0,84 + R.16,47-1,00</i>		
Output shaft front	<b>6218 C3</b>	0750 116 002
Counter shaft front	<b>5395/5335</b>	0750 117 009
Counter shaft rear	<b>5395/5335</b>	0750 117 009
Reverse shaft	*	0750 115 369
Selector mechanism	*	0635 303 053

POSITION	Fersa	OEM
<b>16S-251</b> <i>R.13,80-0,84</i>		
Input shaft front	<b>F 15104</b>	0750 117 732
Main shaft front	<b>CONE 4395</b>	0750 117 232
Main shaft intermediate	<b>F 19087</b>	0750 115 531
Main shaft	*	0750 115 303
Main shaft	*	0750 115 327
Main shaft	*	0750 115 326
Main shaft rear	<b>F 15191</b>	0750 117 678
Counter shaft front	<b>5395/5335</b>	0735 371 604
Counter shaft rear	<b>5395/5335</b>	0735 371 604
Output shaft front	*	0635 360 007
Output shaft rear	<b>6218 C3</b>	0750 116 002
Reverse shaft	*	0750 115 369

POSITION	Fersa	OEM
<b>16S-252 TO IT</b>		
Input shaft front	<b>F 15104</b>	0750 117 732
Main Shaft	<b>CONE 4395</b>	0750 117 232
Main Shaft	<b>F 19087</b>	0750 115 531
Main Shaft	*	0750 115 303
Main Shaft	*	0750 115 327
Main Shaft	*	0750 115 326
Main Shaft rear	<b>F 15191</b>	0750 117 678
Output Shaft Front	*	0635 338 035
Output Shaft Rear	<b>6218 C3</b>	0750 116 394
Countershaft front	<b>5395/5335</b>	0750 117 009
Countershaft rear	<b>5395/5335</b>	0750 117 009
Reverse Idler	*	0750 115 369

POSITION	Fersa	OEM
<b>16S-1300</b>		
Input shaft front	<b>F 19008</b>	0750 118 130
Main shaft	*	0501 398 211
Main shaft	*	0735 320 496
Main shaft	*	0750 115 955
Main shaft intermediate	<b>F 19016</b>	0735 455 114
Case housing	*	0635 303 053
Main shaft	*	0501 398 351
Counter shaft front	<b>F 15047</b>	0750 117 883
Counter shaft rear	<b>32310 F</b>	0750 117 008
Main shaft front	<b>F 19009</b>	0735 410 057
Main shaft rear	<b>F 19075</b>	0750 118 010
	*	0735 298 125
	*	0750 116 166
Case housing	<b>6218 C3</b>	0750 116 394
Reverse shaft	*	0750 115 059

POSITION	Fersa	OEM
<b>16S-1600</b>		
Input shaft front	<b>F 19008</b>	0750 118 130
Main shaft	*	0501 398 211
Main shaft	*	0750 115 956
Main shaft	*	0750 115 958
Main shaft	*	0750 115 955
Main shaft intermediate	<b>F 19038</b>	0750 118 220
	<b>F 19010</b>	0501 398 714
Counter shaft front	<b>F 15047</b>	0750 117 883
Counter shaft rear	<b>5395/5335</b>	0750 117 009
Reduction	<b>F 18052</b>	0750 116 422
Main shaft rear	<b>F 19037</b>	0750 118 038
	*	0735 298 125
	<b>6218 C3</b>	0750 116 394
Reverse shaft	*	0750 115 957

POSITION	Fersa	OEM
<b>16S-1620 TD/16S-1625 TD/16S-162 TD IT/16S-1621 TD IT</b>		
Input shaft front	<b>F 15104</b>	0750 117 732
Input shaft front	<b>F 19008</b>	0750 118 130
Main Shaft	<b>CONE 4395</b>	0750 117 232
Main Shaft	<b>F 19087</b>	0750 115 534
Main Shaft	<b>F 17038 K</b>	0735 321 087
Main Shaft	<b>F 17039 K</b>	0750 115 325
Main Shaft	<b>F 17040 K</b>	0750 115 324
Main Shaft rear	<b>F 15246</b>	0750 117 677
Output Shaft Front	*	0735 298 169
Output Shaft Rear	<b>6218 C3</b>	0750 116 394
Reverse Idler	<b>F 17041 K</b>	0750 115 366
Countershaft front	<b>5395/5335</b>	0750 117 009
Countershaft rear	<b>5395/5335</b>	0750 117 009
Input shaft front	<b>F 19008</b>	0750 118 130
Main shaft	*	0501 398 211
Main shaft	*	0750 115 956
Main shaft	*	0750 115 955
Main shaft	*	0750 115 958
Main shaft intermediate	<b>F 19016</b>	0735 455 114
(Direct drive housing)	<b>F 19010</b>	0501 398 714
(Over drive housing)	<b>F 19039</b>	0750 118 471
Counter shaft front	<b>F 15047</b>	0750 117 883
Counter shaft rear (Before 02/96)	<b>5395/5335</b>	0750 117 009
Counter shaft rear (After 02/96)	<b>32310 F</b>	0750 117 008
Output shaft front	<b>F 18052</b>	0750 116 422
Main shaft rear	<b>6218 C3</b>	0750 116 394
Main shaft front	<b>F 19037</b>	0750 118 038
Reverse shaft	*	0750 115 957
	*	0735 298 125

POSITION	Fersa	OEM
<b>16S-1820 TO/16S-182 TO IT/16S-1821 TO IT/16S-1822 TO/16S-1825 TO</b>		
Input shaft front	<b>F 15104</b>	0750 117 732
Main Shaft	<b>F 19087</b>	0750 115 534
Main Shaft	<b>F 17038 K</b>	0735 321 087



POSITION	Fersa	OEM
<b>16S-1820 TO/16S-182 TO IT/16S-1821 TO IT/16S-1822 TO/16S-1825 TO</b>		
Main Shaft	<b>F 17039 K</b>	0750 115 325
Main Shaft	<b>F 17040 K</b>	0750 115 324
Main Shaft rear	<b>F 15246</b>	0750 117 677
Output Shaft Front	*	0735 298 169
Output Shaft Rear	<b>6218 C3</b>	0750 116 394
Reverse Idler	<b>F 17041 K</b>	0750 115 366
Countershaft front	<b>5395/5335</b>	0750 117 009
Countershaft rear	<b>5395/5335</b>	0750 117 009

<b>16S-1823 TO</b>		
Input shaft front	<b>F 15104</b>	0750 117 773
Main Shaft front	*	0735 368 084
Main Shaft front	*	0735 455 298
Main Shaft	<b>F 19087</b>	0750 115 534
Main Shaft	<b>F 17038 K</b>	0735 321 087
Main Shaft	<b>F 17039 K</b>	0750 115 325
Main Shaft	<b>F 17040 K</b>	0750 115 324
Main Shaft rear	<b>F 15246</b>	0750 117 677
Output Shaft Front	*	0735 298 169
Output Shaft Rear	<b>6218 C3</b>	0750 116 394
Reverse Idler	<b>F 17041 K</b>	0750 115 366
Countershaft front	<b>5395/5335</b>	0750 117 009
Countershaft rear	<b>5395/5335</b>	0750 117 009

<b>16S-1900</b>		
Input shaft front	<b>F 19008</b>	0750 118 130
Main shaft	*	0501 398 211
Main shaft	*	0750 115 956
Main shaft	*	0750 115 955
Main shaft	*	0750 115 958
Main shaft intermediate	<b>F 19038</b>	0750 118 220
	<b>F 19010</b>	0501 398 714
Counter shaft front	<b>F 15047</b>	0750 117 883
Counter shaft rear	<b>5395/5335</b>	0750 117 009
Reduction	<b>F 18052</b>	0750 116 422
	<b>6218 C3</b>	0750 116 394
Main shaft rear	<b>F 19037</b>	0750 118 038
Reverse shaft	*	0750 115 957
	*	0735 298 125

<b>16S-1920 TD/16S-1921 TD IT/16S-1922 TD</b>		
Input shaft front	<b>F 15104</b>	0750 117 732
Main Shaft	<b>CONE 4395</b>	0750 117 232
Main Shaft	<b>F 19087</b>	0750 115 531
Main Shaft	*	0750 115 303
Main Shaft	*	0750 115 327
Main Shaft	*	0750 115 326
Main Shaft rear	<b>F 15191</b>	0750 117 678
Output Shaft Front	*	0735 298 169

POSITION	Fersa	OEM
<b>16S-1920 TD/16S-1921 TD IT/16S-1922 TD</b>		
Output Shaft Rear	<b>6218 C3</b>	0750 116 394
Countershaft front	<b>5395/5335</b>	0750 117 009
Countershaft rear	<b>5395/5335</b>	0750 117 009
Reverse Idler	*	0750 115 369

<b>16S-1923 TD</b>		
Input shaft front	<b>F 15104</b>	0750 117 773
Main Shaft front	*	0735 368 084
Main Shaft front	*	0735 455 298
Main Shaft	<b>F 19087</b>	0750 115 531
Main Shaft	*	0750 115 303
Main Shaft	*	0750 115 327
Main Shaft	*	0750 115 326
Main Shaft rear	<b>F 15191</b>	0750 117 678
Output Shaft Front	*	0735 298 169
Output Shaft Rear	<b>6218 C3</b>	0750 116 394
Countershaft front	<b>5395/5335</b>	0750 117 009
Countershaft rear	<b>5395/5335</b>	0750 117 009
Reverse Idler	*	0750 115 369

<b>16S-2220 TO/TO IT/16S-222 TO IT/16S-2222 TO/16S-2223 TO/16S-2225 TO/16S-2221 TO IT</b>		
Input shaft front	<b>F 15104</b>	0750 117 732
Main Shaft	<b>F 19087</b>	0750 115 531
Main Shaft	*	0750 115 303
Main Shaft	*	0750 115 327
Main Shaft	*	0750 115 326
Main Shaft rear	<b>F 15191</b>	0750 117 678
Output Shaft Front	*	0735 298 169
Output Shaft Rear	<b>6218 C3</b>	0750 116 394
Countershaft front	<b>5395/5335</b>	0750 117 009
Countershaft rear	<b>5395/5335</b>	0750 117 009
Reverse Idler	*	0750 115 369

<b>16S-2220 TD/16S-222 TD IT/16S-2222 TD/16S-2225 TD/16S-2221 TD IT</b>		
Input shaft front	<b>F 15104</b>	0750 117 732
Main Shaft	<b>CONE 4395</b>	0750 117 232
Main Shaft	<b>F 19087</b>	0750 115 531
Main Shaft	*	0750 115 303
Main Shaft	*	0750 115 327
Main Shaft	*	0750 115 326
Main Shaft rear	<b>F 15191</b>	0750 117 678
Output Shaft Front	*	0735 298 169
Output Shaft Rear	<b>6218 C3</b>	0750 116 394
Countershaft front	<b>5395/5335</b>	0750 117 009
Countershaft rear	<b>5395/5335</b>	0750 117 009
Reverse Idler	*	0750 115 369

POSITION	Fersa	OEM
<b>16S-2223 TD</b>		
Input shaft front	<b>F 15104</b>	0750 117 773
Main Shaft front	*	0735 368 084
Main Shaft front	*	0735 455 298
Main Shaft	<b>F 19087</b>	0750 115 531
Main Shaft	*	0750 115 303
Main Shaft	*	0750 115 327
Main Shaft	*	0750 115 326
Main Shaft rear	<b>F 15191</b>	0750 117 678
Output Shaft Front	*	0735 298 169
Output Shaft Rear	<b>6218 C3</b>	0750 116 394
Countershaft front	<b>5395/5335</b>	0750 117 009
Countershaft rear	<b>5395/5335</b>	0750 117 009
Reverse Idler	*	0750 115 369

<b>16S-2223 TO</b>		
Input shaft front	<b>F 15104</b>	0750 117 773
Main Shaft front	*	0735 368 084
Main Shaft front	*	0735 455 298
Main Shaft	<b>F 19087</b>	0750 115 531
Main Shaft	*	0750 115 303
Main Shaft	*	0750 115 327
Main Shaft	*	0750 115 326
Main Shaft rear	<b>F 15191</b>	0750 117 678
Output Shaft Front	*	0735 298 169
Output Shaft Rear	<b>6218 C3</b>	0750 116 394
Countershaft front	<b>5395/5335</b>	0750 117 009
Countershaft rear	<b>5395/5335</b>	0750 117 009
Reverse Idler	*	0750 115 369

<b>16S-2320 TD/16S-232 TD IT</b>		
Input shaft front	<b>F 15104</b>	0750 117 732
Main Shaft	<b>CONE 4395</b>	0750 117 232
Main Shaft	<b>F 19087</b>	0750 115 531
Main Shaft	*	0750 115 303
Main Shaft	*	0750 115 327
Main Shaft	*	0750 115 326
Main Shaft rear	<b>F 15191</b>	0750 117 678
Output Shaft Front	*	0735 298 169
Output Shaft Rear	<b>6218 C3</b>	0750 116 394
Countershaft front	<b>5395/5335</b>	0750 117 009
Countershaft rear	<b>5395/5335</b>	0750 117 009
Reverse Idler	*	0750 115 369

<b>16S-2321 TD IT</b>		
Input shaft front	<b>F 15104</b>	0750 117 732
Main Shaft front	*	0735 368 084
Main Shaft front	*	0735 455 298
Main Shaft	<b>CONE 4395</b>	0750 117 232
Main Shaft	<b>F 19087</b>	0750 115 531

POSITION	Fersa	OEM
<b>16S-2321 TD IT</b>		
Main Shaft	*	0750 115 303
Main Shaft	*	0750 115 327
Main Shaft	*	0750 115 326
Main Shaft rear	<b>F 15191</b>	0750 117 678
Output Shaft Front	*	0735 298 169
Output Shaft Rear	<b>6218 C3</b>	0750 116 394
Countershaft front	<b>5395/5335</b>	0750 117 009
Countershaft rear	<b>5395/5335</b>	0750 117 009
Reverse Idler	*	0750 115 369

<b>16S-2322 TD/16S-2323 TD/16S-2325 TD</b>		
Input shaft front	<b>F 15104</b>	0750 117 773
Main Shaft front	*	0735 368 084
Main Shaft front	*	0735 455 298
Main Shaft	<b>F 19087</b>	0750 115 531
Main Shaft	*	0750 115 303
Main Shaft	*	0750 115 327
Main Shaft	*	0750 115 326
Main Shaft rear	<b>F 15191</b>	0750 117 678
Output Shaft Front	*	0735 298 169
Output Shaft Rear	<b>6218 C3</b>	0750 116 394
Countershaft front	<b>5395/5335</b>	0750 117 009
Countershaft rear	<b>5395/5335</b>	0750 117 009
Reverse Idler	*	0750 115 369

<b>16S-2520 TO</b>		
Input shaft front	<b>F 15104</b>	0750 117 732
Main Shaft	<b>CONE 4395</b>	0750 117 232
Main Shaft	<b>F 19087</b>	0750 115 531
Main Shaft	*	0750 115 303
Main Shaft	*	0750 115 327
Main Shaft	*	0750 115 326
Main Shaft rear	<b>F 15191</b>	0750 117 678
Output Shaft Front	*	0735 298 169
Output Shaft Front	*	0635 338 035
Output Shaft Rear	<b>6218 C3</b>	0750 116 394
Countershaft front	<b>5395/5335</b>	0750 117 009
Countershaft rear	<b>5395/5335</b>	0750 117 009
Reverse Idler	*	0750 115 369

<b>16S-2522 TO/16S-2523 TO IT/16S-2521 TO IT</b>		
Input shaft front	<b>F 15104</b>	0750 117 732
Main Shaft	<b>CONE 4395</b>	0750 117 232
Main Shaft	<b>F 19087</b>	0750 115 531
Main Shaft	*	0750 115 303
Main Shaft	*	0750 115 327
Main Shaft	*	0750 115 326
Main Shaft rear	<b>F 15191</b>	0750 117 678
Output Shaft Front	*	0735 298 169

POSITION	Fersa	OEM
<b>16S-2522 TO/16S-2523 TO IT/16S-2521 TO IT</b>		
Output Shaft Rear	<b>6218 C3</b>	0750 116 394
Countershaft front	<b>5395/5335</b>	0750 117 009
Countershaft rear	<b>5395/5335</b>	0750 117 009
Reverse Idler	*	0750 115 369

<b>16S-2525 TO</b>		
Input shaft front	<b>F 15104</b>	0750 117 732
Main Shaft front	*	0735 368 084
Main Shaft front	*	0735 455 298
Main Shaft	<b>CONE 4395</b>	0750 117 232
Main Shaft	<b>F 19087</b>	0750 115 531
Main Shaft	*	0750 115 303
Main Shaft	*	0750 115 327
Main Shaft	*	0750 115 326
Main Shaft rear	<b>F 15191</b>	0750 117 678
Output Shaft Front	*	0735 298 169
Output Shaft Rear	<b>6218 C3</b>	0750 116 394
Countershaft front	<b>5395/5335</b>	0750 117 009
Countershaft rear	<b>5395/5335</b>	0750 117 009
Reverse Idler	*	0750 115 369

<b>16S-2723 TO/16S-2725 TO/16S-272 TO IT/16S-2721 TO IT</b>		
Input shaft front	<b>F 15104</b>	0750 117 732
Main Shaft	<b>CONE 4395</b>	0750 117 232
Main Shaft	<b>F 19087</b>	0750 115 531
Main Shaft	*	0750 115 303
Main Shaft	*	0750 115 327
Main Shaft	*	0750 115 326
Main Shaft rear	<b>F 15191</b>	0750 117 678
Output Shaft Front	*	0635 360 007
Output Shaft Rear	<b>6218 C3</b>	0750 116 394
Countershaft front	<b>5395/5335</b>	0750 117 009
Countershaft rear	<b>5395/5335</b>	0750 117 009
Reverse Idler	*	0750 115 369

<b>AK6-80</b>		
<i>R.6,70-0,82 + R.7,53-0,82</i>		
Input shaft front	<b>NUP 314 FMNR/C3</b>	0750 118 082
Main shaft front	*	0750 118 090
Main shaft	*	0735 320 314
Main shaft	*	0750 115 284
Main shaft	*	0750 115 134
Main shaft	*	0750 115 282
Main shaft	*	0750 115 283
Main shaft	*	0735 320 154
Main shaft rear	<b>6314 NR/C3</b>	0635 333 049
Counter shaft front	<b>33889/33822</b>	0750 117 083
Counter shaft rear	<b>33885/33822</b>	1246 203 008
Reverse shaft	*	0750 115 011
Selector mechanism	*	0635 300 086
Selector mechanism	*	0635 303 053

POSITION	Fersa	OEM
<b>AK6-80</b>		
<i>R.6,70-0,73 + R.9,00-1,00</i>		
Input shaft front	<b>NUP 314 FMNR/C3</b>	0750 118 082
Input shaft front (Short type)	<b>30217 F</b>	0750 117 078
Input shaft case (Short type)	<b>32209 F</b>	0635 373 021
Main shaft front	*	0750 118 090
Main shaft	*	0735 320 314
Main shaft	*	0750 115 284
Main shaft	*	0750 115 134
Main shaft	*	0750 115 282
Main shaft	*	0750 115 283
Main shaft	*	0735 320 154
Main shaft rear	<b>6314 NR/C3</b>	0635 333 049
Counter shaft front	<b>33889/33822</b>	0750 117 083
Counter shaft rear	<b>33885/33822</b>	1246 203 008
Reverse shaft	*	0750 115 011
Selector mechanism	*	0635 300 086
Selector mechanism	*	0635 303 053

<b>AK6-80+GV80</b>		
<i>R.6,70-0,69 + R.7,67-0,78 + R.9,00-0,835</i>		
GV front	<b>NUP 314 FMNR/C3</b>	0750 118 081
GV	*	0750 115 089
Input shaft	*	0735 358 032
Input shaft front	<b>NUP 314 FMNR/C3</b>	0750 118 082
Splitter front	<b>25590/25521</b>	1246 203 011
Splitter rear	<b>33889/33822</b>	0750 117 083
Main shaft front	*	0750 118 090
Main shaft	*	0735 320 314
Main shaft	*	0750 115 284
Main shaft	*	0750 115 134
Main shaft	*	0750 115 282
Main shaft	*	0750 115 283
Main shaft	*	0735 320 154
Main shaft rear	<b>6314 NR/C3</b>	0635 333 049
Counter shaft front	<b>33889/33822</b>	0750 117 083
Counter shaft rear	<b>33885/33822</b>	1246 203 008
Reverse shaft	*	0750 115 011
Selector mechanism	*	0635 300 086
Selector mechanism	*	0635 303 053

<b>AK6-90</b>		
<i>R.5,67-0,70 + R.6,37-0,74 + R.7,03-0,70 + R.7,03-1,00</i>		
Input shaft front	<b>NUP 314 FMNR/C3</b>	0750 118 082
Main shaft front	*	0750 118 090
Main shaft	*	0735 320 314
Main shaft	*	0750 115 284
Main shaft	*	0750 115 134
Main shaft	*	0750 115 282
Main shaft	*	0750 115 283
Main shaft	*	0735 320 154
Main shaft rear	<b>6314 NR/C3</b>	0635 333 049
Counter shaft front	<b>F 15047</b>	0750 117 010

POSITION	Fersa	OEM
<b>AK6-90</b>	<i>R.5,67-0,70 + R.6,37-0,74 + R.7,03-0,70 + R.7,03-1,00</i>	
Counter shaft rear	<b>32309 F</b>	0750 117 778
Reverse shaft	*	0750 115 011
Selector mechanism	*	0635 300 086
Selector mechanism	*	0635 303 053
Selector mechanism	*	0635 303 062

POSITION	Fersa	OEM
<b>AK6-90</b>	<i>R.7,03-0,81 + R.9,01-1,00</i>	
Input shaft front	<b>NUP 314 FMNR/C3</b>	0750 118 082
Input shaft front	<b>30217 F</b>	0750 117 078
Input shaft case	<b>32209 F</b>	0635 373 021
Main shaft front (Input shaft 1268 302 057)	*	0750 118 090
Main shaft front (Input shaft 1268 302 135)	*	0735 455 012
Main shaft (Input shaft 1268 302 057)	*	0735 320 314
Main shaft (Input shaft 1268 302 135)	*	0735 320 499
Main shaft	*	0750 115 284
Main shaft	*	0750 115 134
Main shaft	*	0750 115 282
Main shaft	*	0750 115 283
Main shaft	*	0735 320 154
Main shaft rear	<b>6314 NR/C3</b>	0635 333 049
Counter shaft front	<b>F 15047</b>	0750 117 010
Counter shaft rear	<b>32309 F</b>	0750 117 778
Reverse shaft	*	0750 115 011
Selector mechanism	*	0635 300 086
Selector mechanism	*	0635 303 053
Selector mechanism	*	0635 303 062

POSITION	Fersa	OEM
<b>AK6-90+GV90</b>	<i>R.7,03-0,58 + R.7,03-0,70 + R.7,03-0,82+ R.9,01-0,82</i>	
GV front	<b>NUP 314 FMNR/C3</b>	0750 118 081
GV	*	0750 115 089
Input shaft front	<b>NUP 314 FMNR/C3</b>	0750 118 082
Input shaft	*	0735 358 032
Splitter front	*	1269 298 951
Splitter rear	<b>F 15047</b>	0750 117 010
Main shaft front	*	0750 118 090
Main shaft	*	0735 320 314
Main shaft	*	0750 115 284
Main shaft	*	0750 115 134
Main shaft	*	0750 115 282
Main shaft	*	0750 115 283
Main shaft	*	0735 320 154
Main shaft rear (Bearing with ball)	<b>6314 NR/C3</b>	0635 333 049
Main shaft rear (Bearing with needle)	*	0635 410 167
Counter shaft front	<b>F 15047</b>	0750 117 010
Counter shaft rear	<b>32309 F</b>	0750 117 778
Reverse shaft	*	0750 115 011
Selector mechanism	*	0635 300 086
Selector mechanism	*	0635 303 053
Selector mechanism	*	0635 303 062

POSITION	Fersa	OEM
<b>S6-36</b>	<i>R.6,06-0,73 + R.6,06-0,84 + R.7,43-1,00 + R.8,97-1,00</i>	
Input shaft front	*	0750 118 178
Main shaft front	*	0735 358 128
Main shaft	*	0750 115 006
Main shaft	*	0735 320 498
Main shaft	*	0735 320 499
Main shaft	*	0735 320 500
Main shaft	*	0735 320 501
Main shaft	*	0735 320 501
Main shaft rear	*	0750 118 001
Counter shaft rear	<b>2789/2729</b>	0750 117 198
Counter shaft front	<b>344/332</b>	0735 371 607
Reverse shaft	*	0635 300 110

POSITION	Fersa	OEM
<b>S6-36</b>	<i>R.6,93-0,80</i>	
Input shaft front	*	0750 118 178
Main shaft front	*	0735 358 128
Main shaft	*	0735 321 527
Main shaft	*	0735 320 498
Main shaft	*	0735 320 499
Main shaft	*	0735 320 500
Main shaft	*	0735 320 501
Main shaft rear	*	0750 118 001
Counter shaft rear	<b>2789/2729</b>	0750 117 198
Counter shaft front	<b>344/332</b>	0735 371 607
Reverse shaft	*	0635 300 110

POSITION	Fersa	OEM
<b>S6-36+GV36</b>	<i>R.7,43-0,85 + R.8,97-0,83</i>	
GV front	*	0735 410 271
GV	*	0735 320 933
Input shaft intermediate	*	0735 358 170
Input shaft front	*	0735 410 243
Main shaft front	*	0735 358 128
Main shaft	*	0750 115 006
Main shaft	*	0735 320 498
Main shaft	*	0735 320 499
Main shaft	*	0735 320 500
Main shaft	*	0735 320 501
Main shaft	*	0735 320 501
Main shaft rear	*	0750 118 001
Counter shaft front	*	0750 117 197
Counter shaft intermediate	*	0635 900 819
Counter shaft rear	<b>2789/2729</b>	0750 117 198
Reverse shaft	*	0635 300 110

POSITION	Fersa	OEM
<b>S5-24</b>		
Counter shaft front	<b>30207 F</b>	0750 117 442
Counter shaft rear	<b>30207 F</b>	0750 117 442
Input shaft front	<b>30208 F</b>	0635 371 020
Main shaft	*	0750 115 111

POSITION	Fersa	OEM
<b>S5-24</b>		
Main shaft	*	0750 115 114
Main shaft	*	0735 320 272
Main shaft	*	0750 115 116
Main shaft	*	0735 320 273
Main shaft	*	0750 115 112
Main shaft	*	0735 320 274
Main shaft front	<b>30208 F</b>	0635 371 020
Main shaft rear	<b>30208 F</b>	0635 371 020
Reverse shaft	*	0750 115 128

<b>S5-35/2</b> <i>R.5,64-0,695 + R.5,64-0,756 + R.6,45-0,799 + R.6,75-1,00 + R.6,79-1,00 + R.8,02-1,00</i>		
Input shaft front	<b>NUP 309 FMN/C3</b>	0735 410 029
Main shaft front	*	0735 358 014
Main shaft	*	0735 320 211
Main shaft	*	0735 320 210
Main shaft	*	0735 320 411
Main shaft rear	*	0735 410 034
Counter shaft front	<b>30208 F</b>	0750 117 664
Counter shaft rear	<b>30208 F</b>	0750 117 664
Reverse shaft	*	0735 320 114

<b>S5-35/2</b> <i>R.5,64-1,00</i>		
Input shaft front (Input shaft 1238 302 132)	*	0750 116 133
Input shaft rear	<b>NUP 309 FMN/C3</b>	0735 410 029
Main shaft front	*	0735 358 014
Main shaft front (Input shaft 1238 302 132)	*	1203 302 110
Main shaft	*	0735 320 211
Main shaft	*	0735 320 210
Main shaft	*	0735 320 411
Main shaft rear	*	0735 410 034
Counter shaft front	<b>30208 F</b>	0750 117 664
Counter shaft rear	<b>30208 F</b>	0750 117 664
Reverse shaft	*	0735 320 114

<b>S5-35/2</b> <i>R.6,45-0,744</i>		
Input shaft front	<b>NUP 309 FMN/C3</b>	0735 410 029
Main shaft front	*	0735 358 014
Main shaft	*	0735 320 210
Main shaft	*	0735 320 411
Main shaft rear	*	0735 410 034
Counter shaft front	<b>30208 F</b>	0750 117 664
Counter shaft rear	<b>30208 F</b>	0750 117 664
Reverse shaft	*	0735 320 114

<b>S5-35/2</b> <i>R.7,65-1,00</i>		
Input shaft front (Special version. Only for rvi-saviem. To be coupled together the input shaft 1238 321 102 with the bearing 0635 421 210)	<b>NUP 309 FMN/C3</b>	0735 410 029

POSITION	Fersa	OEM
<b>S5-35/2</b> <i>R.7,65-1,00</i>		
Input shaft front	*	0635 421 210
Main shaft front	*	0735 358 014
Main shaft	*	0735 320 211
Main shaft	*	0735 320 210
Main shaft	*	0735 320 411
Main shaft rear	*	0735 410 034
Counter shaft front	<b>30208 F</b>	0750 117 664
Counter shaft rear	<b>30208 F</b>	0750 117 664
Reverse shaft	*	0735 320 114

<b>S5-420</b>		
Main shaft	*	0750 115 233
Main shaft	*	0735 320 873
Main shaft	*	0735 320 871
Main shaft	*	0735 321 010
Counter shaft front	<b>2580/2520</b>	1307 203 019
Counter shaft rear	<b>2580/2520</b>	1307 203 019
Main shaft front	<b>CONE F 15084</b>	0735 371 372
Main shaft rear	<b>F 15278</b>	1307 204 275
Input shaft front	<b>28580/28521</b>	1307 202 116

<b>S5-680</b>		
Input shaft front	<b>F 19042</b>	0501 398 244
Reverse shaft	*	0635 300 110
Main shaft	*	0735 320 501
Main shaft	*	0635 300 237
Main shaft	*	0750 115 059
Main shaft	*	0735 320 837
Counter shaft front	<b>3382/3320</b>	0501 398 246
Counter shaft rear	<b>2789/2720</b>	0501 398 247
Main shaft front	<b>NUP 310 FM/C3</b>	0501 398 245
Main shaft rear (Old Type)	*	0735 358 128
Main shaft rear (New Type)	*	0501 398 233
	*	0735 298 125

<b>S5-820</b> <i>series 131 1 095 004/005</i>		
Input shaft front	<b>JM 612949/JM 612910</b>	0735 370 728
Main shaft front	<b>CONE F 15101</b>	0735 371 591
Main shaft	*	0501 398 230
Main shaft	*	0735 321 106
Main shaft	*	0735 320 418
Main shaft	*	0735 321 108
Main shaft	*	0735 321 383
Main shaft rear	*	0735 370 730
Counter shaft front	<b>33889/33822</b>	0750 117 083
Counter shaft rear	<b>33885/33822</b>	1246 203 008
Reverse shaft	*	0735 320 941

POSITION	Fersa	OEM
<b>S5-820</b> <i>serie 131 1 095 014</i>		
Input shaft front	<b>JM 612949/JM 612910</b>	0735 370 728
Main shaft front	*	0501 398 239
Main shaft	*	0501 398 230
Main shaft	*	0735 321 106
Main shaft	*	0735 320 418
Main shaft	*	0735 321 108
Main shaft	*	0735 321 383
Main shaft rear	*	0735 370 730
Counter shaft front	<b>33889/33822</b>	0750 117 083
Counter shaft rear	<b>33885/33822</b>	1246 203 008
Reverse shaft	*	0735 320 941

POSITION	Fersa	OEM
<b>S6-65</b>		
Counter shaft front	<b>33889/33822</b>	0750 117 083
Counter shaft rear	<b>33885/33822</b>	1246 203 008
Input shaft front	*	0635 421 295
Input shaft front (Short type)	*	0735 370 050
Input shaft case (Short type)	<b>32209 F</b>	0635 373 021
GV front	<b>NUP 314 FMNR/C3</b>	0750 118 081
GV	*	0750 115 089
Input shaft	*	0735 358 032
Input shaft front	*	0635 421 295
Splitter front	<b>25590/25521</b>	1246 203 011
Splitter rear	<b>33889/33822</b>	0750 117 083
Main shaft intermediate	*	0750 118 090
Main shaft	*	0735 320 334
Main shaft	*	0735 320 411
Main shaft	*	0750 115 227
Main shaft	*	0735 320 370
Main shaft	*	0735 320 609
Main shaft front	*	0750 118 090
Main shaft rear	*	0750 116 033
Reverse shaft	*	0750 115 011

POSITION	Fersa	OEM
<b>S6-66</b> <i>R.6,82-0,79 + R.7,36-0,85 + R.9,06-1,00</i>		
Input shaft front	<b>JM 612949/JM 612910</b>	0750 117 347
Main shaft front	<b>CONE F 15101</b>	0735 371 591
Main shaft intermediate	*	0735 321 543
Main shaft	*	0735 320 493
Main shaft	*	0735 321 106
Main shaft	*	0735 321 108
Main shaft	*	0735 298 255
Main shaft rear	*	0735 370 730
Counter shaft front	<b>33889/33822</b>	0750 117 083
Counter shaft rear	<b>33885/33822</b>	1246 203 008
Reverse shaft	*	0750 115 233

POSITION	Fersa	OEM
<b>S6-66+GV66</b> <i>R.9,06-0,83</i>		
Input shaft rear	*	0735 358 170
Input shaft front	*	0735 410 468
Input shaft	*	0735 321 011
GV rear	*	0735 410 308
GV front	*	0735 410 309
GV case	<b>33885/33822</b>	1246 203 008
Main shaft front	<b>CONE F 15101</b>	0735 371 591
Main shaft intermediate	*	0735 321 543
Main shaft	*	0735 320 493
Main shaft	*	0735 321 106
Main shaft	*	0735 321 108
Main shaft rear	*	0735 370 730
Counter shaft rear	<b>33885/33822</b>	1246 203 008
Reverse shaft	*	0750 115 233

POSITION	Fersa	OEM
<b>S6-80</b> <i>R.5,66-0,69 + R.6,10-0,66 + R.6,69-0,82 + R.7,53-0,82</i>		
Input shaft front	<b>NUP 314 FMNR/C3</b>	0750 118 082
Main shaft front	*	0750 118 090
Main shaft	*	0735 320 314
Main shaft	*	0750 115 284
Main shaft	*	0750 115 134
Main shaft	*	0750 115 282
Main shaft	*	0750 115 283
Main shaft	*	0735 320 154
Main shaft rear	<b>6314 NR/C3</b>	0635 333 049
Counter shaft front	<b>33889/33822</b>	0750 117 083
Counter shaft rear	<b>33885/33822</b>	1246 203 008
Reverse shaft	*	0750 115 011
Selector mechanism	*	0635 300 086
Selector mechanism	*	0635 303 053

POSITION	Fersa	OEM
<b>S6-80</b> <i>R.6,70-0,73</i>		
Input shaft front	<b>NUP 314 FMNR/C3</b>	0750 118 082
Input shaft front (short type)	<b>30217 F</b>	0750 117 078
Input shaft case (short type)	<b>32209 F</b>	0635 373 021
Main shaft front	*	0750 118 090
Main shaft	*	0735 320 314
Main shaft	*	0750 115 284
Main shaft	*	0750 115 134
Main shaft	*	0750 115 282
Main shaft	*	0750 115 283
Main shaft	*	0735 320 154
Main shaft rear	<b>6314 NR/C3</b>	0635 333 049
Counter shaft front	<b>33889/33822</b>	0750 117 083
Counter shaft rear	<b>33885/33822</b>	1246 203 008
Reverse shaft	*	0750 115 011
Selector mechanism	*	0635 300 086
Selector mechanism	*	0635 303 053

POSITION	Fersa	OEM
<b>S6-80</b> <i>R.6,70-0,78 + R.6,70-0,82</i>		
Input shaft front	<b>NUP 314 FMNR/C3</b>	0750 118 082
Main shaft front	*	0750 118 090
Main shaft	*	0735 320 314
Main shaft	*	0750 115 284
Main shaft	*	0750 115 134
Main shaft	*	0750 115 282
Main shaft	*	0750 115 283
Main shaft	*	0735 320 154
Main shaft rear	<b>6314 NR/C3</b>	0635 333 049
Counter shaft front	<b>33889/33822</b>	0750 117 083
Counter shaft rear	<b>33885/33822</b>	1246 203 008
Reverse shaft	*	0750 115 011
Selector mechanism	*	0635 300 086
Selector mechanism	*	0635 303 053

POSITION	Fersa	OEM
<b>S6-80</b> <i>R.7,41-1,0</i>		
Input shaft front	<b>NUP 314 FMNR/C3</b>	0750 118 082
Main shaft front	*	0750 118 090
Main shaft	*	0735 320 314
Main shaft	*	0750 115 284
Main shaft	*	0750 115 134
Main shaft	*	0750 115 282
Main shaft	*	0750 115 283
Main shaft	*	0735 320 154
Main shaft rear (Bearing with ball)	<b>6314 NR/C3</b>	0635 333 049
Main shaft rear (Bearing with needle)	<b>NUP 314 FMNR/C3</b>	0750 118 082
Counter shaft front	<b>33889/33822</b>	0750 117 083
Counter shaft rear	<b>33885/33822</b>	1246 203 008
Reverse shaft	*	0750 115 011
Selector mechanism	*	0635 300 086
Selector mechanism	*	0635 303 053

POSITION	Fersa	OEM
<b>S6-80+GV80</b> <i>R.6,70-0,57 + R.6,70-0,60 + R.6,70-0,69 + R.7,41-0,84</i>		
GV front	<b>NUP 314 FMNR/C3</b>	0750 118 081
GV	*	0750 115 089
Input shaft front	<b>NUP 314 FMNR/C3</b>	0750 118 082
Input shaft	*	0735 358 032
Splitter front	<b>25590/25521</b>	1246 203 011
Splitter rear	<b>33889/33822</b>	0750 117 083
Main shaft front	*	0750 118 090
Main shaft	*	0735 320 314
Main shaft	*	0750 115 284
Main shaft	*	0750 115 134
Main shaft	*	0750 115 282
Main shaft	*	0750 115 283
Main shaft	*	0735 320 154
Main shaft rear	<b>6314 NR/C3</b>	0635 333 049
Counter shaft front	<b>33889/33822</b>	0750 117 083
Counter shaft rear	<b>33885/33822</b>	1246 203 008

POSITION	Fersa	OEM
<b>S6-80+GV80</b> <i>R.6,70-0,57 + R.6,70-0,60 + R.6,70-0,69 + R.7,41-0,84</i>		
Reverse shaft	*	0750 115 011
Selector mechanism	*	0635 300 086
Selector mechanism	*	0635 303 053

POSITION	Fersa	OEM
<b>S6-80+GV80</b> <i>R.7,65-0,71 + R.7,67-0,78 + R.8,90-0,84 + R.9,00-0,835</i>		
GV front	<b>NUP 314 FMNR/C3</b>	0750 118 081
GV	*	0750 115 089
Input shaft front	<b>NUP 314 FMNR/C3</b>	0750 118 082
Input shaft	*	0735 358 032
Splitter front	<b>25590/25521</b>	1246 203 011
Splitter rear	<b>33889/33822</b>	0750 117 083
Main shaft front	*	0750 118 090
Main shaft	*	0735 320 314
Main shaft	*	0750 115 284
Main shaft	*	0750 115 134
Main shaft	*	0750 115 282
Main shaft	*	0750 115 283
Main shaft	*	0735 320 154
Main shaft rear	<b>6314 NR/C3</b>	0635 333 049
Counter shaft front	<b>33889/33822</b>	0750 117 083
Counter shaft rear	<b>33885/33822</b>	1246 203 008
Reverse shaft	*	0750 115 011

POSITION	Fersa	OEM
<b>S6-85</b> <i>R.6,75-0,83 + R.7,72-1,00</i>		
Input shaft front	<b>JM 612949/JM 612910</b>	0750 117 347
Main shaft front	<b>CONE F 15101</b>	0750 117 562
Main shaft front (With input shaft 1310 302 007, 1310 302 014, 1310 302 015)	*	0735 370 987
Main shaft	*	0735 321 543
Main shaft	*	0735 320 493
Main shaft	*	0735 321 106
Main shaft	*	0735 321 106
Main shaft	*	0735 321 108
Main shaft	*	0735 298 255
Main shaft (With input shaft 1310 302 007, 1310 302 014, 1310 302 015)	*	0735 321 027
Main shaft rear	*	0735 370 730
Counter shaft front	<b>33889/33822</b>	0750 117 083
Counter shaft rear	<b>33885/33822</b>	1246 203 008
Reverse shaft	*	0750 115 233

POSITION	Fersa	OEM
<b>S6-90</b> <i>R.5,67-0,70 + R.6,37-0,74 + R.6,37-0,82 + R.6,98-1,00 + R.7,03-0,58 + R.7,03-0,70 + R.7,03-0,81</i>		
Input shaft front	<b>NUP 314 FMNR/C3</b>	0750 118 082
Main shaft front	*	0735 455 012
Main shaft front	*	0750 118 090
Main shaft	*	0735 320 499
Main shaft	*	0735 320 314
Main shaft	*	0750 115 284
Main shaft	*	0750 115 134

POSITION	Fersa	OEM
<b>S6-90</b>	<i>R.5,67-0,70 + R.6,37-0,74 + R.6,37-0,82 + R.6,98-1,00 + R.7,03-0,58 + R.7,03-0,70 + R.7,03-0,81</i>	
Main shaft	*	0750 115 282
Main shaft	*	0750 115 283
Main shaft	*	0735 320 154
Main shaft rear (Bearing with ball)	<b>6314 NR/C3</b>	0635 333 049
Main shaft rear (Bearing with needle)	<b>NUP 314 FMNR/C3</b>	0750 118 082
Main shaft rear (Bearing with needle)	*	0635 410 167
Counter shaft front	<b>F 15047</b>	0750 117 010
Counter shaft rear	<b>32309 F</b>	0750 117 778
Reverse shaft	*	0750 115 011
Selector mechanism	*	0635 300 086
Selector mechanism	*	0635 303 062
Selector mechanism	*	0635 303 053

<b>S6-90</b>	<i>R.6,37-1,00 + R.7,03-1,00</i>	
Input shaft front	<b>30217 F</b>	0750 117 078
Input shaft case	<b>32209 F</b>	0635 373 021
Main shaft front	*	0750 118 090
Main shaft	*	0735 320 314
Main shaft	*	0750 115 284
Main shaft	*	0750 115 134
Main shaft	*	0750 115 282
Main shaft	*	0750 115 283
Main shaft	*	0735 320 154
Main shaft rear (Bearing with needle)	<b>NUP 314 FMNR/C3</b>	0750 118 082
Main shaft rear (Bearing with ball)	<b>6314 NR/C3</b>	0635 333 049
Counter shaft front	<b>F 15047</b>	0750 117 010
Counter shaft rear	<b>32309 F</b>	0750 117 778
Reverse shaft	*	0750 115 011
Selector mechanism	*	0635 300 086
Selector mechanism	*	0635 303 062
Selector mechanism	*	0635 303 053

<b>S6-90</b>	<i>R.6,37-1,00 + R.7,03-1,00 + R.9,01-1,00</i>	
Input shaft front	<b>NUP 314 FMNR/C3</b>	0750 118 082
Input shaft front (short type)	<b>30217 F</b>	0750 117 078
Input shaft case (short type)	<b>32209 F</b>	0635 373 021
Main shaft front	*	0735 455 012
Main shaft front	*	0750 118 090
Main shaft	*	0735 320 499
Main shaft	*	0735 320 314
Main shaft	*	0750 115 284
Main shaft	*	0750 115 134
Main shaft	*	0750 115 282
Main shaft	*	0750 115 283
Main shaft	*	0735 320 154
Main shaft rear (Bearing with ball)	<b>6314 NR/C3</b>	0635 333 049
Main shaft rear (Bearing with needle)	<b>NUP 314 FMNR/C3</b>	0750 118 082
Main shaft rear (Bearing with needle)	*	0635 410 167
Counter shaft front	<b>F 15047</b>	0750 117 010

POSITION	Fersa	OEM
<b>S6-90</b>	<i>R.6,37-1,00 + R.7,03-1,00 + R.9,01-1,00</i>	
Counter shaft rear	<b>32309 F</b>	0750 117 778
Reverse shaft	*	0750 115 011
Selector mechanism	*	0635 300 086
Selector mechanism	*	0635 303 062
Selector mechanism	*	0635 303 053

<b>S6-90</b>	<i>R.9,08-1,00</i>	
Input shaft front	<b>NUP 314 FMNR/C3</b>	0750 118 082
Main shaft front	*	0750 118 090
Main shaft	*	0735 320 314
Main shaft	*	0750 115 284
Main shaft	*	0750 115 134
Main shaft	*	0750 115 282
Main shaft	*	0750 115 283
Main shaft	*	0735 320 154
Main shaft rear (Bearing with needle)	<b>NUP 314 FMNR/C3</b>	0750 118 082
Main shaft rear (Bearing with ball)	<b>6314 NR/C3</b>	0635 333 049
Counter shaft front	<b>F 15047</b>	0750 117 010
Counter shaft rear	<b>32309 F</b>	0750 117 778
Reverse shaft	*	0750 115 011
Selector mechanism	*	0635 300 086
Selector mechanism	*	0635 303 062
Selector mechanism	*	0635 303 053

<b>S6-90+GV90</b>	<i>R.6,98-0,82</i>	
GV front	<b>NUP 314 FMNR/C3</b>	0750 118 081
GV	*	0750 115 089
Input shaft front	<b>NUP 314 FMNR/C3</b>	0750 118 082
Input shaft	*	0735 358 032
Splitter front	*	1269 298 951
Splitter rear	<b>F 15047</b>	0750 117 010
Main shaft front	*	0735 455 012
Main shaft	*	0735 320 499
Main shaft	*	0750 115 284
Main shaft	*	0750 115 134
Main shaft	*	0750 115 282
Main shaft	*	0750 115 283
Main shaft	*	0735 320 154
Main shaft rear (Bearing with needle)	<b>NUP 314 FMNR/C3</b>	0750 118 082
Main shaft rear (Bearing with ball)	<b>6314 NR/C3</b>	0635 333 049
Main shaft rear (Bearing with needle)	*	0635 410 167
Counter shaft front	<b>F 15047</b>	0750 117 010
Counter shaft rear	<b>32309 F</b>	0750 117 778
Reverse shaft	*	0750 115 011
Selector mechanism	*	0635 300 086
Selector mechanism	*	0635 303 062
Selector mechanism	*	0635 303 053



POSITION	Fersa	OEM
<b>S6-90+GV90</b> <i>R.7,03-0,58 + R.7,03-0,70 + R.9,01-0,82</i>		
GV front	<b>NUP 314 FMNR/C3</b>	0750 118 081
GV	*	0750 115 089
Input shaft front	<b>NUP 314 FMNR/C3</b>	0750 118 082
Input shaft	*	0735 358 032
Splitter front	*	1269 298 951
Splitter rear	<b>F 15047</b>	0750 117 010
Main shaft front	*	0750 118 090
Main shaft	*	0735 320 314
Main shaft	*	0750 115 284
Main shaft	*	0750 115 134
Main shaft	*	0750 115 282
Main shaft	*	0750 115 283
Main shaft	*	0735 320 154
Main shaft rear (Bearing with needle)	<b>NUP 314 FMNR/C3</b>	0750 118 082
Main shaft rear (Bearing with ball)	<b>6314 NR/C3</b>	0635 333 049
Main shaft rear (Bearing with needle)	*	0635 410 167
Counter shaft front	<b>F 15047</b>	0750 117 010
Counter shaft rear	<b>32309 F</b>	0750 117 778
Reverse shaft	*	0750 115 011
Selector mechanism	*	0635 300 086
Selector mechanism	*	0635 303 062
Selector mechanism	*	0635 303 053

<b>S6-90/1</b> <i>R.5,67-0,70 + R.6,37-0,82 + R.6,37-1,00 + R.6,98-1,00</i>		
Input shaft front	<b>NUP 314 FMNR/C3</b>	0750 118 082
Main shaft front	*	0735 455 012
Main shaft	*	0735 320 499
Main shaft	*	0750 115 284
Main shaft	*	0750 115 134
Main shaft	*	0750 115 282
Main shaft	*	0750 115 283
Main shaft	*	0735 320 154
Main shaft rear	<b>NUP 314 FMNR/C3</b>	0750 118 082
Counter shaft front	<b>F 15047</b>	0750 117 010
Counter shaft rear	<b>32309 F</b>	0750 117 778
Reverse shaft	*	0750 115 011

<b>S6-90/1</b> <i>R.9,01-1,00</i>		
Input shaft front	<b>NUP 314 FMNR/C3</b>	0750 118 082
Main shaft front	*	0750 118 090
Main shaft	*	0735 320 499
Main shaft	*	0750 115 284
Main shaft	*	0750 115 134
Main shaft	*	0750 115 282
Main shaft	*	0750 115 283
Main shaft	*	0735 320 154
Main shaft rear	<b>NUP 314 FMNR/C3</b>	0750 118 082
Counter shaft front	<b>F 15047</b>	0750 117 010
Counter shaft rear	<b>32309 F</b>	0750 117 778
Reverse shaft	*	0750 115 011

POSITION	Fersa	OEM
<b>S6-90/1+GV90</b> <i>R.6,98-0,82</i>		
GV	<b>NUP 314 FMNR/C3</b>	0750 118 081
Input shaft	*	0750 115 089
Input shaft front	<b>NUP 314 FMNR/C3</b>	0750 118 082
Input shaft	*	0735 358 032
Splitter front	*	1269 298 951
Splitter rear	<b>F 15047</b>	0750 117 010
Main shaft front	*	0735 455 012
Main shaft	*	0735 320 499
Main shaft	*	0750 115 284
Main shaft	*	0750 115 134
Main shaft	*	0750 115 282
Main shaft	*	0750 115 283
Main shaft	*	0735 320 154
Main shaft rear	<b>NUP 314 FMNR/C3</b>	0750 118 082
Counter shaft front	<b>F 15047</b>	0750 117 010
Counter shaft rear	<b>32309 F</b>	0750 117 778
Reverse shaft	*	0750 115 011

<b>S6-90/1+GV90</b> <i>R.9,01-0,82</i>		
GV	<b>NUP 314 FMNR/C3</b>	0750 118 081
Input shaft	*	0750 115 089
Input shaft front	<b>NUP 314 FMNR/C3</b>	0750 118 082
Input shaft	*	0735 358 032
Splitter front	*	1269 298 951
Splitter rear	<b>F 15047</b>	0750 117 010
Main shaft front	*	0750 118 090
Main shaft	*	0735 320 314
Main shaft	*	0750 115 284
Main shaft	*	0750 115 134
Main shaft	*	0750 115 282
Main shaft	*	0750 115 283
Main shaft	*	0735 320 154
Main shaft rear (Bearing with needle)	<b>NUP 314 FMNR/C3</b>	0750 118 082
Main shaft rear (Bearing with ball)	<b>6314 NR/C3</b>	0635 333 049
Counter shaft front	<b>F 15047</b>	0750 117 010
Counter shaft rear	<b>32309 F</b>	0750 117 778
Reverse shaft	*	0750 115 011

<b>S6-680</b>		
Input shaft front	<b>F 19042</b>	0501 398 244
Reverse shaft	*	0635 300 110
Main shaft	*	0735 320 501
Main shaft	*	0635 300 237
Main shaft	*	0735 320 837
Main shaft	*	0735 320 499
Main shaft	*	0735 321 028
Case housing	*	0635 303 053
Counter shaft front	<b>3382/3320</b>	0501 398 246
Counter shaft rear	<b>2789/2720</b>	0501 398 247

POSITION	Fersa	OEM
<b>S6-680</b>		
Main shaft front	<b>NUP 310 FM/C3</b>	0501 398 245
Main shaft rear (Old Type)	*	0735 358 128
Main shaft rear (New Type)	*	0501 398 233
	*	0735 298 125

<b>S6-1550</b>		
Input shaft front	<b>NUP 314 FMNR/C3</b>	0750 118 082
Reverse shaft	*	0501 398 211
Main shaft	*	0735 320 471
Main shaft	*	0501 398 351
Main shaft	*	0735 320 407
Main shaft	*	0735 320 499
Main shaft	*	0735 320 837
Case housing	*	0635 303 053
Counter shaft front	<b>F 15047</b>	0750 117 883
Counter shaft rear	<b>32309 F</b>	0635 374 019
Main shaft rear	*	0735 455 012
Main shaft front	*	0735 320 154

<b>S680+GV</b>		
Main shaft front	*	0750 118 090
Main shaft	*	0735 320 314
Main shaft	*	0750 115 284
Main shaft	*	0750 115 134
Main shaft	*	0750 115 282
Main shaft	*	0750 115 283
Main shaft	*	0735 320 154
Main shaft rear	<b>NUP 314 FMNR/C3</b>	0750 118 082
Counter shaft front	<b>33889/33822</b>	0750 117 083
Counter shaft rear	<b>33885/33822</b>	1246 203 008
Reverse shaft	*	0750 115 011



02

## OEM Cross References

OEM	Fersa
ZF	
0375 320 748	*
0501 203 518	*
0501 304 461	<b>LM 503349 A/LM 503310</b>
0501 398 211	*
0501 398 217	*
0501 398 230	*
0501 398 232	<b>33117 F</b>
0501 398 233	*
0501 398 239	*
0501 398 244	<b>F 19042</b>
0501 398 245	<b>NUP 310 FM/C3</b>
0501 398 246	<b>3382/3320</b>
0501 398 247	<b>2789/2720</b>
0501 398 348	<b>F 19009</b>
0501 398 351	*
0501 398 714	<b>F 19010</b>
0635 300 086	*
0635 300 110	*
0635 300 237	*
0635 303 053	*
0635 303 062	*
0635 304 904	<b>6218 C3</b>
0635 330 035	*
0635 330 050	*
0635 331 013	*
0635 331 219	<b>6008</b>
0635 331 224	<b>6011</b>
0635 331 270	<b>6001 2RS</b>
0635 331 384	<b>6015</b>
0635 331 390	*
0635 332 033	<b>6208</b>
0635 332 034	*
0635 332 057	<b>6213 C3</b>
0635 332 058	*
0635 332 066	<b>6216 C3</b>
0635 332 132	*
0635 332 156	*
0635 333 021	<b>6307</b>
0635 333 026	*
0635 333 028	<b>6308</b>
0635 333 033	*
0635 333 049	<b>6314 NR/C3</b>
0635 333 129	<b>6309</b>
0635 338 015	*
0635 338 028	*
0635 338 035	*
0635 338 048	*
0635 338 049	<b>F 18052</b>
0635 338 090	*
0635 338 133	*
0635 360 007	*
0635 370 023	<b>32008 XF</b>
0635 370 030	<b>32022 XF</b>
0635 371 005	<b>6218 C3</b>
0635 371 020	<b>30208 F</b>
0635 371 029	<b>30217 F</b>
0635 371 036	<b>30209 F</b>

OEM	Fersa
0635 373 008	<b>32212 F</b>
0635 373 018	<b>32213 F</b>
0635 373 021	<b>32209 F</b>
0635 374 019	<b>32309 F</b>
0635 375 004	<b>31311 F</b>
0635 376 005	<b>33115 F</b>
0635 376 014	<b>33213 F</b>
0635 376 023	<b>33208 F</b>
0635 410 167	*
0635 416 243	*
0635 416 244	<b>NJ 1024 FM</b>
0635 416 273	*
0635 416 275	*
0635 416 308	*
0635 421 210	*
0635 421 254	<b>NUP 314 FMNR/C3</b>
0635 421 276	<b>NUP 314 FMNR/C3</b>
0635 421 295	*
0635 421 317	<b>NUP 212 FM</b>
0635 450 098	*
0635 470 012	*
0635 490 006	*
0635 501 357	*
0635 501 398	<b>33885/33822</b>
0635 501 454	*
0635 501 940	<b>M 88043/10 B</b>
0635 900 109	<b>6314 NR/C3</b>
0635 900 819	*
0735 298 005	*
0735 298 125	*
0735 298 169	*
0735 298 255	*
0735 300 478	<b>CONE 33207 F</b>
0735 300 479	<b>CUP 32306 F</b>
0735 300 480	<b>CONE 32306 F</b>
0735 300 481	<b>CUP 33207 F</b>
0735 300 495	<b>30314 F</b>
0735 300 509	<b>33208 F</b>
0735 300 510 A	<b>33262 A/33461</b>
0735 300 511	<b>33885/33822</b>
0735 300 512	<b>33889/33822</b>
0735 300 513	<b>45285 A/45221</b>
0735 300 921	*
0735 300 931	*
0735 300 932	*
0735 301 534	<b>32026 XF</b>
0735 301 558	<b>47490/47420</b>
0735 320 042	*
0735 320 114	*
0735 320 120	*
0735 320 154	*
0735 320 210	*
0735 320 211	*
0735 320 261	*
0735 320 262	*
0735 320 272	*
0735 320 273	*
0735 320 274	*

\* Availability to be advised

OEM	Fersa
0735 320 314	*
0735 320 334	*
0735 320 370	*
0735 320 371	*
0735 320 377	*
0735 320 378	*
0735 320 379	*
0735 320 396	*
0735 320 401	*
0735 320 407	*
0735 320 411	*
0735 320 417	*
0735 320 418	*
0735 320 451	*
0735 320 452	*
0735 320 460	*
0735 320 461	*
0735 320 465	*
0735 320 466	*
0735 320 471	*
0735 320 486	*
0735 320 487	*
0735 320 492	*
0735 320 493	*
0735 320 496	*
0735 320 498	*
0735 320 499	*
0735 320 500	*
0735 320 501	*
0735 320 548	*
0735 320 549	*
0735 320 568	*
0735 320 584	*
0735 320 609	*
0735 320 731	*
0735 320 732	*
0735 320 786	*
0735 320 799	*
0735 320 816	*
0735 320 837	*
0735 320 871	*
0735 320 873	*
0735 320 896	*
0735 320 933	*
0735 320 941	*
0735 320 950	*
0735 321 010	*
0735 321 011	*
0735 321 012	*
0735 321 027	*
0735 321 028	*
0735 321 087	<b>F 17038 K</b>
0735 321 103	*
0735 321 106	*
0735 321 108	*
0735 321 383	*
0735 321 392	*
0735 321 393	*

\* Availability to be advised

OEM	Fersa
0735 321 394	*
0735 321 396	*
0735 321 432	*
0735 321 437	*
0735 321 438	*
0735 321 451	*
0735 321 494	*
0735 321 527	*
0735 321 528	*
0735 321 529	*
0735 321 530	*
0735 321 531	*
0735 321 543	*
0735 321 560	*
0735 330 025	*
0735 330 043	<b>6218 C3</b>
0735 330 136	<b>6213 ZMNR/C3</b>
0735 330 292	*
0735 330 349	*
0735 330 597	<b>6213 C3</b>
0735 330 615	<b>6309 2RS</b>
0735 330 785	<b>6218 C3</b>
0735 330 799	*
0735 330 800	<b>F 18054</b>
0735 330 801	*
0735 330 804	*
0735 340 080	*
0735 358 014	*
0735 358 032	*
0735 358 128	*
0735 358 155	*
0735 358 170	*
0735 358 170	*
0735 358 192	*
0735 358 346	*
0735 368 084	*
0735 370 033	*
0735 370 050	*
0735 370 055	<b>F 15047</b>
0735 370 059	<b>4580/4535</b>
0735 370 063	<b>32310 F</b>
0735 370 064	<b>32020 XF</b>
0735 370 165	<b>34306/34478</b>
0735 370 438	<b>2789/2729</b>
0735 370 462	*
0735 370 513	<b>CONE F 15084</b>
0735 370 622/0735 295 076	*
0735 370 728	<b>JM 612949/JM 612910</b>
0735 370 730	*
0735 370 742	<b>3386/3325</b>
0735 370 987	*
0735 371 038	*
0735 371 096	<b>JF 4049/JF 4010</b>
0735 371 372	<b>CONE F 15084</b>
0735 371 406	<b>CONE F 15213</b>
0735 371 464	<b>32022 XF</b>
0735 371 515	<b>33889/33822</b>
0735 371 563	<b>CONE 4395</b>

OEM	Fersa
0735 371 591	<b>CONE F 15101</b>
0735 371 599	<b>HM 807046/HM 807010 BT</b>
0735 371 604	<b>5395/5335</b>
0735 371 605	<b>F 15212</b>
0735 371 607	<b>344/332</b>
0735 371 741	<b>F 15246</b>
0735 371 748	<b>CONE F 15110</b>
0735 371 749	<b>33208 F</b>
0735 371 779	<b>F 15104</b>
0735 371 811	<b>2789/2729</b>
0735 371 815	<b>32032 XF</b>
0735 371 894	<b>F 15114</b>
0735 371 994	<b>33209 F</b>
0735 372 049	*
0735 372 156	<b>5395/5335</b>
0735 372 213	<b>31313 F</b>
0735 372 217	*
0735 372 239	*
0735 410 029	*
0735 410 029	<b>NUP 309 FMN/C3</b>
0735 410 034	*
0735 410 043	*
0735 410 051	<b>F 19008</b>
0735 410 057	<b>F 19009</b>
0735 410 110	*
0735 410 139	*
0735 410 243	*
0735 410 271	*
0735 410 308	*
0735 410 309	*
0735 410 468	*
0735 455 012	*
0735 455 018	<b>F 19075</b>
0735 455 023	<b>F 19075</b>
0735 455 114	<b>F 19016</b>
0735 455 281	*
0735 455 298	*
0735 541 0136	<b>F 19039</b>
0750 115 006	*
0750 115 011	*
0750 115 021	*
0750 115 059	*
0750 115 089	*
0750 115 111	*
0750 115 112	*
0750 115 114	*
0750 115 116	*
0750 115 128	*
0750 115 134	*
0750 115 224	*
0750 115 225	*
0750 115 227	*
0750 115 233	*
0750 115 255	*
0750 115 282	*
0750 115 283	*
0750 115 284	*
0750 115 299	*

OEM	Fersa
0750 115 303	*
0750 115 304	*
0750 115 310	*
0750 115 324	<b>F 17040 K</b>
0750 115 325	<b>F 17039 K</b>
0750 115 326	*
0750 115 327	*
0750 115 366	<b>F 17041 K</b>
0750 115 369	*
0750 115 427	*
0750 115 430	*
0750 115 531	<b>F 19087</b>
0750 115 533	*
0750 115 534	<b>F 19087</b>
0750 115 565	*
0750 115 566	*
0750 115 567	*
0750 115 955	*
0750 115 956	*
0750 115 957	*
0750 115 958	*
0750 115 969	*
0750 115 970	*
0750 115 971	*
0750 115 972	*
0750 115 973	*
0750 115 974	*
0750 116 002	<b>6218 C3</b>
0750 116 033	*
0750 116 036	*
0750 116 048	*
0750 116 104	*
0750 116 133	*
0750 116 165	<b>F 18052</b>
0750 116 166	*
0750 116 197	*
0750 116 206	<b>6213 C3</b>
0750 116 233	<b>6009 C3</b>
0750 116 266	*
0750 116 365	*
0750 116 373	<b>6309 2RS</b>
0750 116 374	*
0750 116 391	*
0750 116 394	<b>6218 C3</b>
0750 116 404	<b>6216 C3</b>
0750 116 422	<b>F 18052</b>
0750 117 008	<b>32310 F</b>
0750 117 009	<b>5395/5335</b>
0750 117 010	<b>F 15047</b>
0750 117 011	<b>4580/4535</b>
0750 117 030	<b>F 15047</b>
0750 117 033	*
0750 117 062	<b>JL 819349/JL 819310</b>
0750 117 078	<b>30217 F</b>
0750 117 079	<b>33262 A/33461</b>
0750 117 081	*
0750 117 083	<b>33889/33822</b>
0750 117 083	<b>33889/33885</b>

\* Availability to be advised

OEM	Fersa
0750 117 144	<b>47490/47420</b>
0750 117 191	<b>34306/34478</b>
0750 117 197	*
0750 117 198	<b>2789/2729</b>
0750 117 199	<b>344/332</b>
0750 117 203	*
0750 117 205	<b>HM 88649/HM 88610</b>
0750 117 232	<b>CONE 4395</b>
0750 117 233	*
0750 117 284	<b>31312 F</b>
0750 117 312	<b>45285 A/45221</b>
0750 117 314	<b>AAS JM 822049/10</b>
0750 117 326	<b>JM 714249/JM 714210</b>
0750 117 347	<b>JM 612949/JM 612910</b>
0750 117 367	<b>32028 XF</b>
0750 117 378	*
0750 117 381	*
0750 117 402	<b>F 15191</b>
0750 117 418	<b>32210 F</b>
0750 117 431	*
0750 117 442	<b>30207 F</b>
0750 117 507	<b>CONE F 15110</b>
0750 117 518	<b>47490/47420</b>
0750 117 524	<b>32309 F</b>
0750 117 562	<b>CONE F 15101</b>
0750 117 615	*
0750 117 621	*
0750 117 625	<b>32014 XF</b>
0750 117 640	<b>JM 205149/ JM 205110</b>
0750 117 651	<b>32210 F</b>
0750 117 664	<b>30208 F</b>
0750 117 677	<b>F 15246</b>
0750 117 678	<b>F 15191</b>
0750 117 732	<b>F 15104</b>
0750 117 766	<b>32026 XF</b>
0750 117 773	<b>F 15104</b>
0750 117 778	<b>32309 F</b>
0750 117 817	<b>32028 XF</b>
0750 117 844	<b>HM 807046/HM 807010 BT</b>
0750 117 881	<b>JF 4049/JF 4010</b>
0750 117 883	<b>F 15047</b>
0750 117 894	*
0750 118 001	*
0750 118 005	<b>F 19016</b>
0750 118 006	<b>F 19010</b>
0750 118 007	*
0750 118 010	<b>F 19075</b>
0750 118 012	*
0750 118 015	<b>NUP 311 FMNR/C3</b>
0750 118 016	*
0750 118 017	*
0750 118 019	<b>F 19019</b>
0750 118 038	<b>F 19037</b>
0750 118 077	<b>NUP 314 FMNR/C3</b>
0750 118 081	<b>NUP 314 FMNR/C3</b>
0750 118 082	<b>NUP 314 FMNR/C3</b>
0750 118 087	*
0750 118 090	*

\* Availability to be advised

OEM	Fersa
0750 118 129	<b>F 19022</b>
0750 118 130	<b>F 19008</b>
0750 118 131	<b>F 19008</b>
0750 118 137	*
0750 118 153	<b>F 19009</b>
0750 118 178	*
0750 118 180	<b>F 19008</b>
0750 118 181	*
0750 118 191	<b>F 19062</b>
0750 118 198	<b>F 19061</b>
0750 118 200	*
0750 118 220	<b>F 19038</b>
0750 118 258	<b>F 19062</b>
0750 118 324	*
0750 118 471	<b>F 19039</b>
0750 118 511	<b>33889/33822</b>
0750 118 955	*
0750 119 048	*
0750 120 077	*
0770 070 054	*
0899 324 021	<b>NJ 2311 FM/C3</b>
0935 355 008	*
109 812 4005	<b>25877/25820</b>
1203 302 110	*
1246 203 007	<b>33889/33822</b>
1246 203 008	<b>33885/33822</b>
1246 203 011	<b>25590/25521</b>
1269 298 951	*
1269 298 966	*
1307 202 116	<b>28580/28521</b>
1307 203 019	<b>2580/2520</b>
1307 204 275	<b>F 15278</b>
5840 302 754	*
5840 302 982	*
5840 333 088	*
5840 333 089	<b>32024 XF</b>
5840 333 095	<b>NJ 2213 FM/C3</b>
5841 300 241	*
5841 300 546	*
5841 300 547	*
5841 300 548	*
5841 300 566	*
5841 300 574	<b>33216 F</b>
5841 300 810	*
5841 303 205	<b>NU 2209 FM/C3</b>
5841 333 574	<b>33216 F</b>



Experts in Bearing Solutions



**Fersa Bearings, S.A.**

Calle Bari, 18 - PLAZA  
50197 Zaragoza - Spain  
T\_ +34 976 333 850

[fersa@fersa.com](mailto:fersa@fersa.com)



[www.fersa.com](http://www.fersa.com)